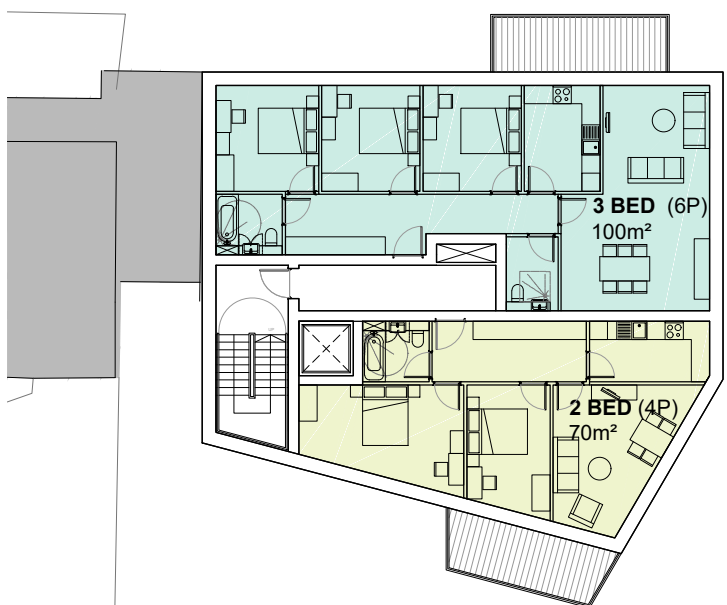


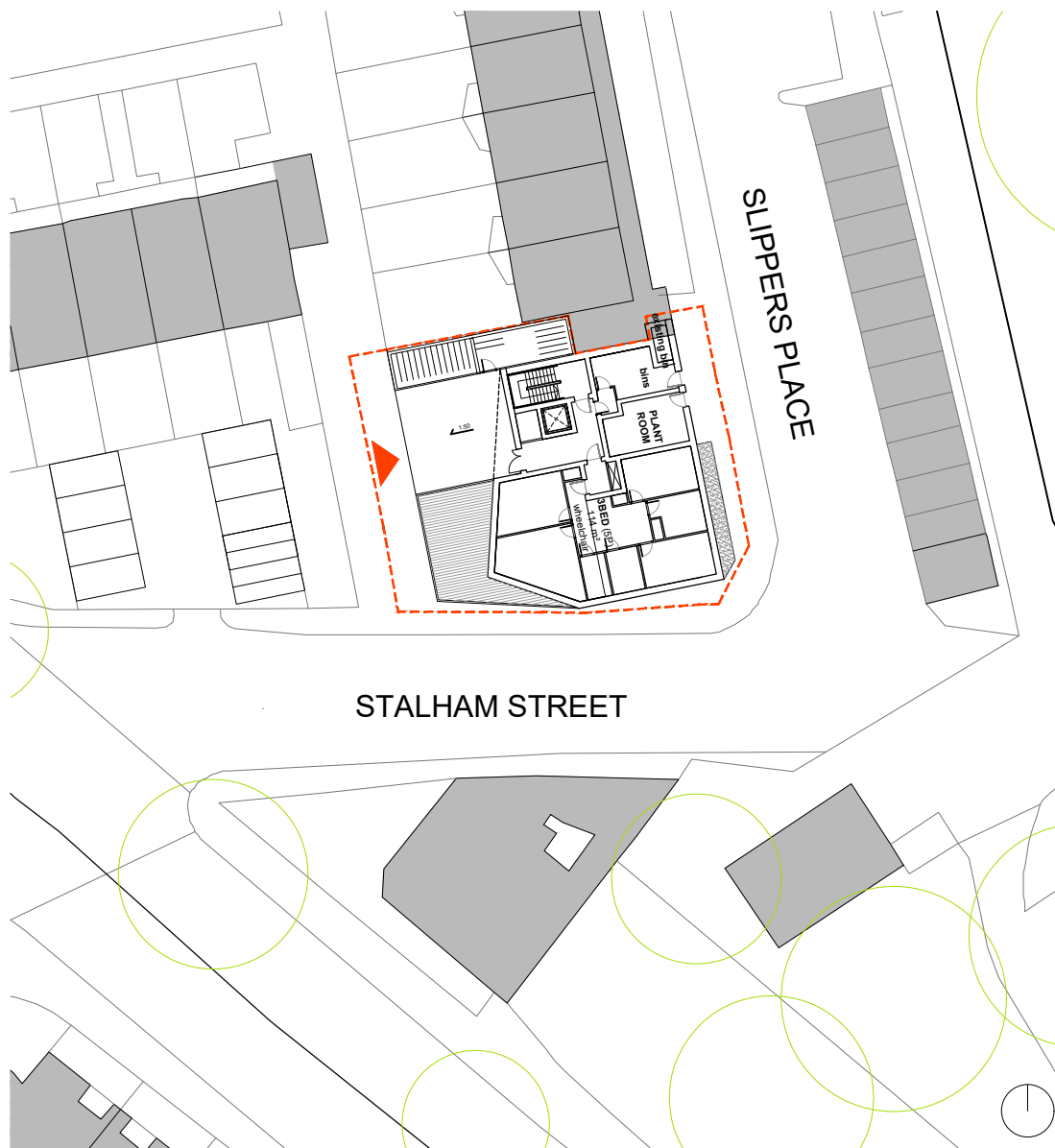
Fifth to Seventh Floor Plan 1:250



First to Fourth Floor Plan 1:250



Ground Floor Plan 1:250



Site Plan 1:500

	3B	2B	1B
7th		1	2
6th		1	2
5th		1	2
4th	1	1	
3rd	1	1	
2nd	1	1	
1st	1	1	
GF	1		
	5	7	6

18units

1B	6 units	33.3%
2B	7 units	38.9%
3B	5 units	27.8%
		66.7%

83.33% dual aspect

notes  
Copyright : the copyright of this drawing is vested in Fraser Brown MacKenna Architects Ltd. It shall not be used without permission by anyone for any purpose. Do not scale drawings - use figured dimensions only. All dimensions to be verified and checked on site. Read the drawing in conjunction with all related drawings and specifications. Notify architect immediately of any discrepancy found therein.

drawing notes

**DRAFT**

REV | BY | CHKD | DATE | AMENDMENT DETAILS

project  
**Slippers Place  
Southwark Sites**  
Stalham Street, London, SE16  
client

**Southwark Council**  
London Borough of Southwark

**FraserBrownMacKennaArchitects**  
15-18 Featherstone St, London EC1Y 8SL, www.fbmacarchitects.com  
T:020 7251 0543

drawing title  
**Proposed Plans  
Workshop 1**

**SKETCH**

scale 1:250@A3 drawn by IN checked by FBM date 14.11.2018  
project station revision  
DRAWING NUMBER **1056 | SK | 013**