

What will the new building look like?



Artist impression of the proposed development as seen from Linden Grove



Artist impression of the proposed development as seen from the internal courtyard

 @lb_southwark  facebook.com/southwarkcouncil

Linden Grove

Pre-Planning Consultation 11th April 2019

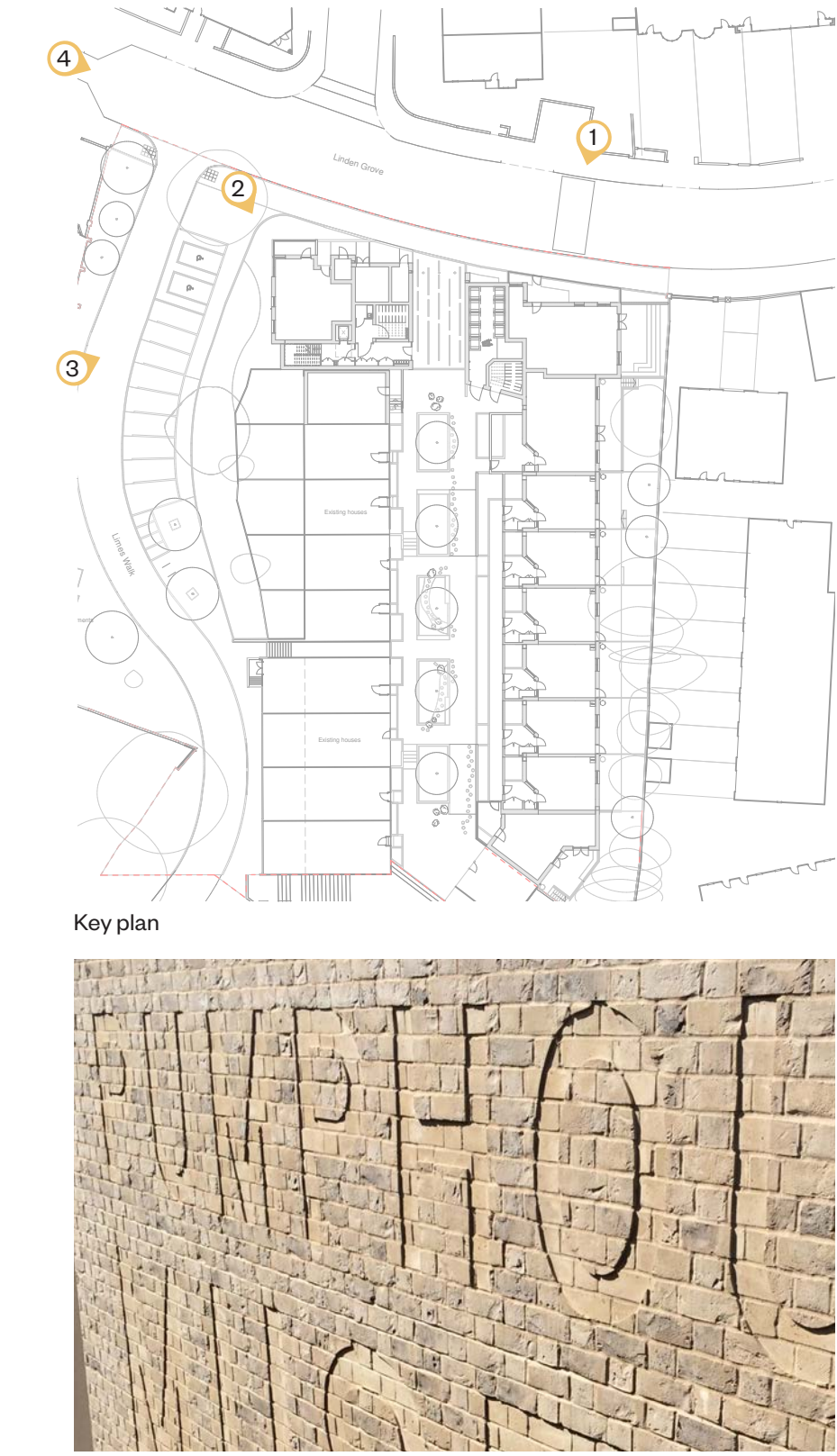
Levitt Bernstein
People.Design

 Southwark
Council
southwark.gov.uk

What will the new building look like?



View 1



Example of brick relief



View 2

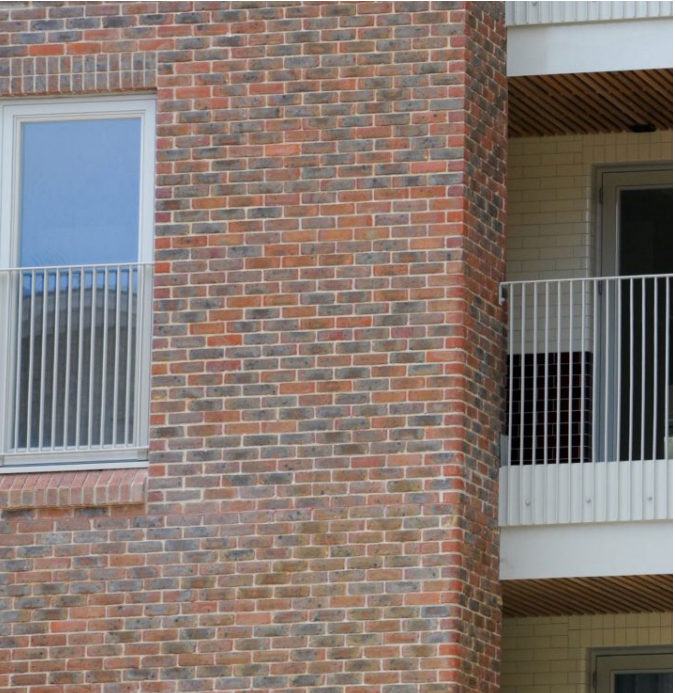


View 3

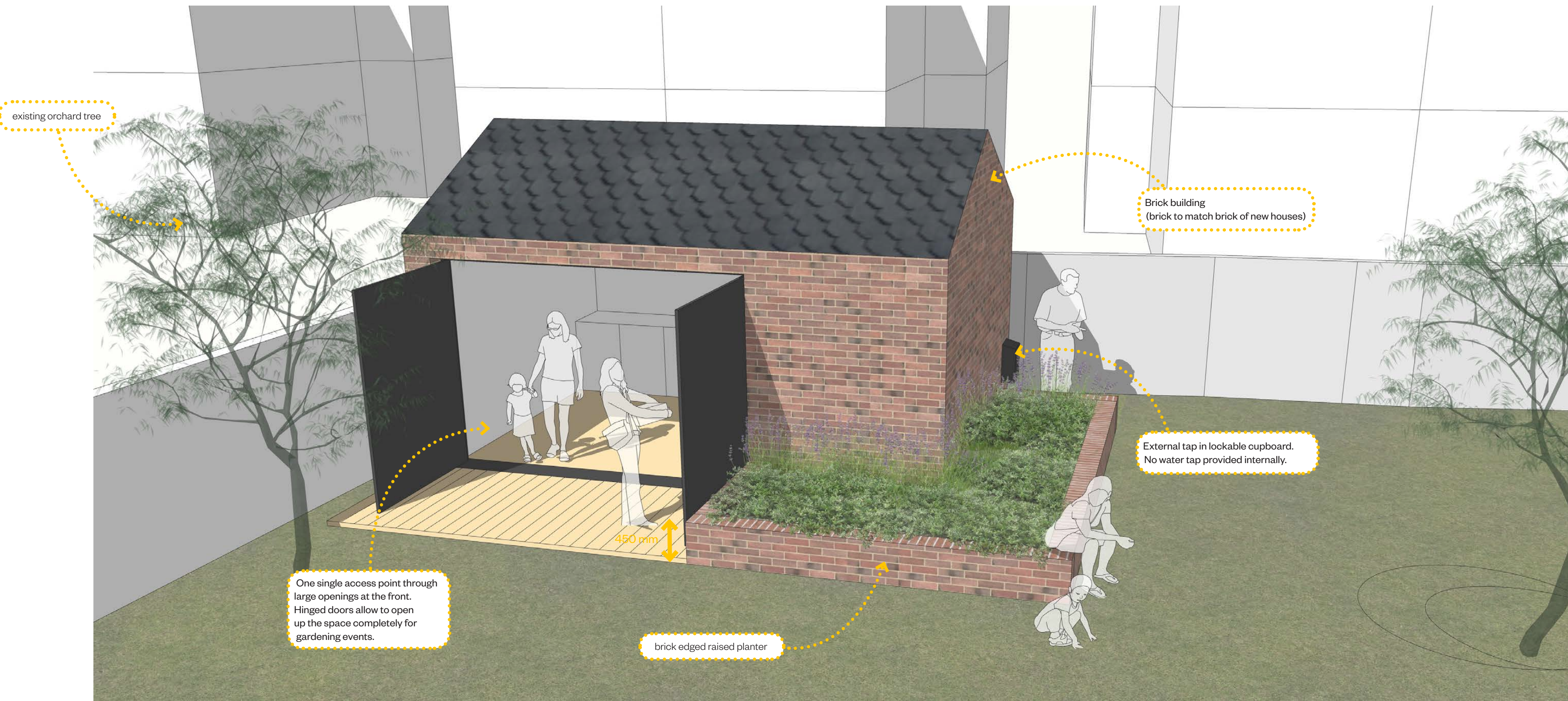


View 4

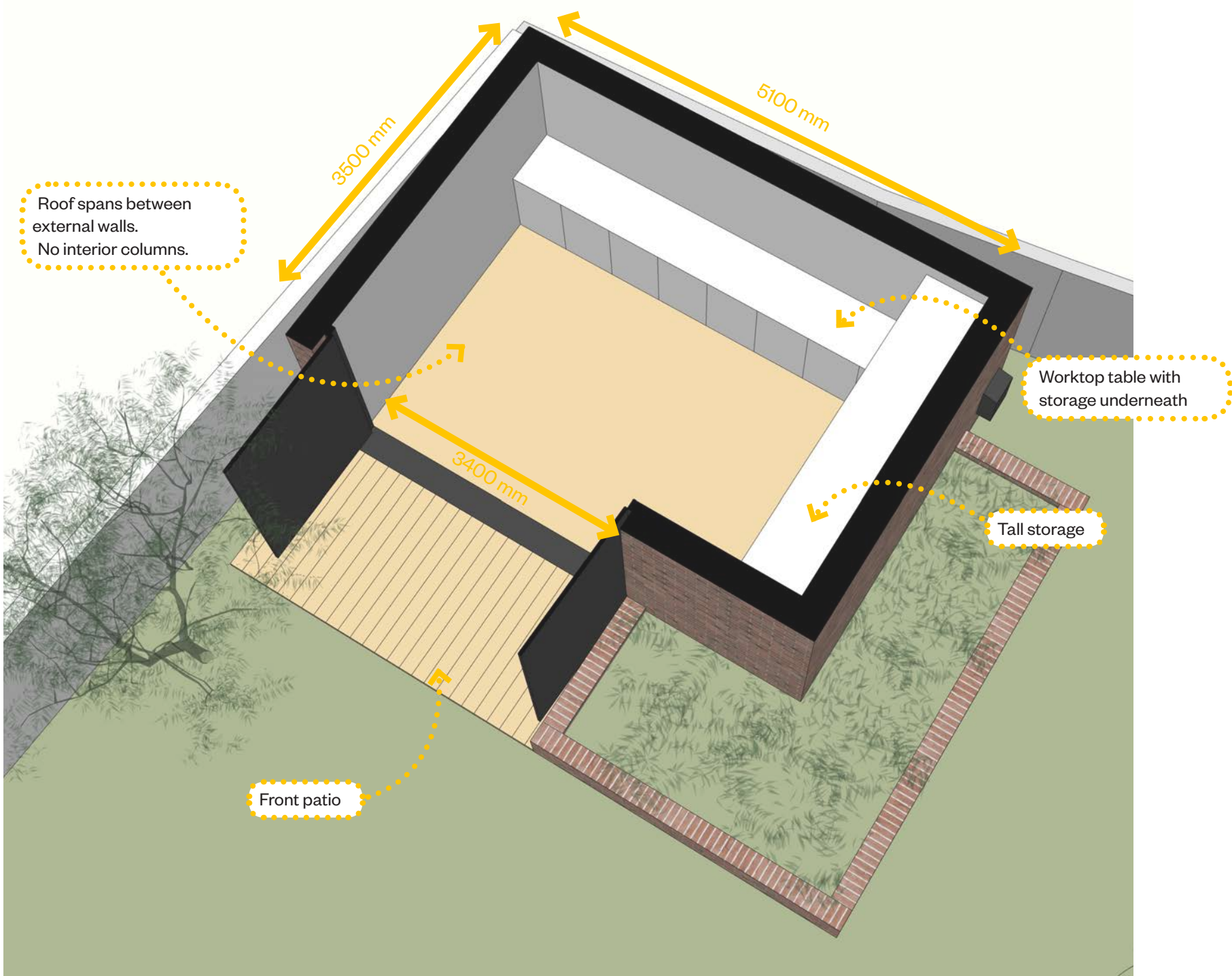
Two tones of red-brown brick



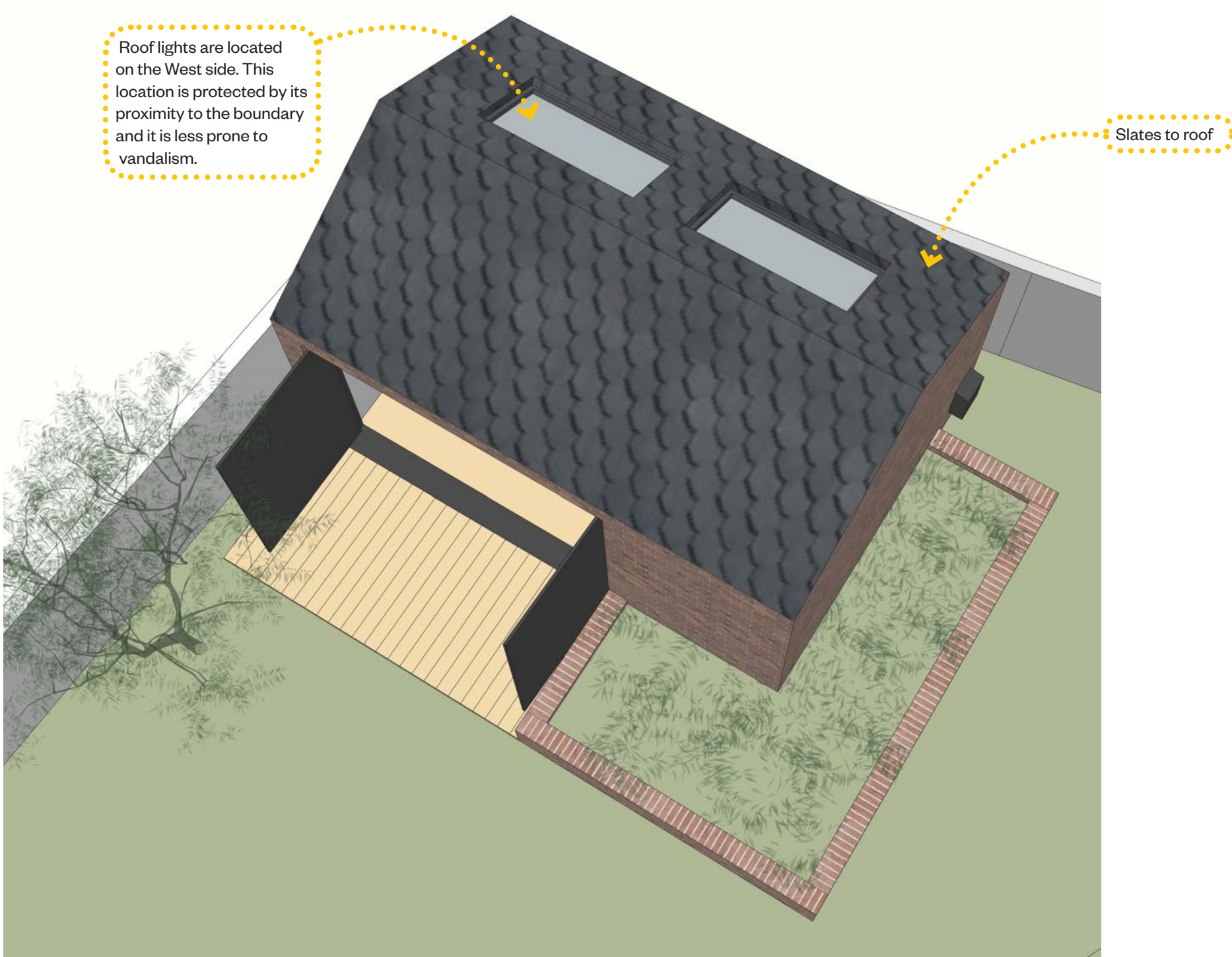
What will the new garden room look like?



View of the garden room from Limes Walk



View 2



View 3

The new garden room will:

- be equal in size to the existing laundry room (17 m2)
- be a one storey brick clad structure
- be secure as possible, to minimise anti-social behaviour
- provide water (externally) and electricity (internally). These may be provided only once the services in the main development have been re-routed .
- provide residents with a space for tools
- provide residents with a space to sit down for a coffee and a chat
- create a sense of community on the estate



View 4