

Victory Community Park

Create one new improved entrance at the corner of Victory Place and Balfour Street removing the two current entrances

Improve fencing and planting with attractive metal railings at 1.2 metres high to create a secure and enhanced green character to park

Keep and improve the world garden zone with new planting and signage

Expand picnic / seating area with improvements to surface finish and communal seating.

Improved play space for local community with natural materials and colours

Table tennis area with a seating wall as a barrier to the path

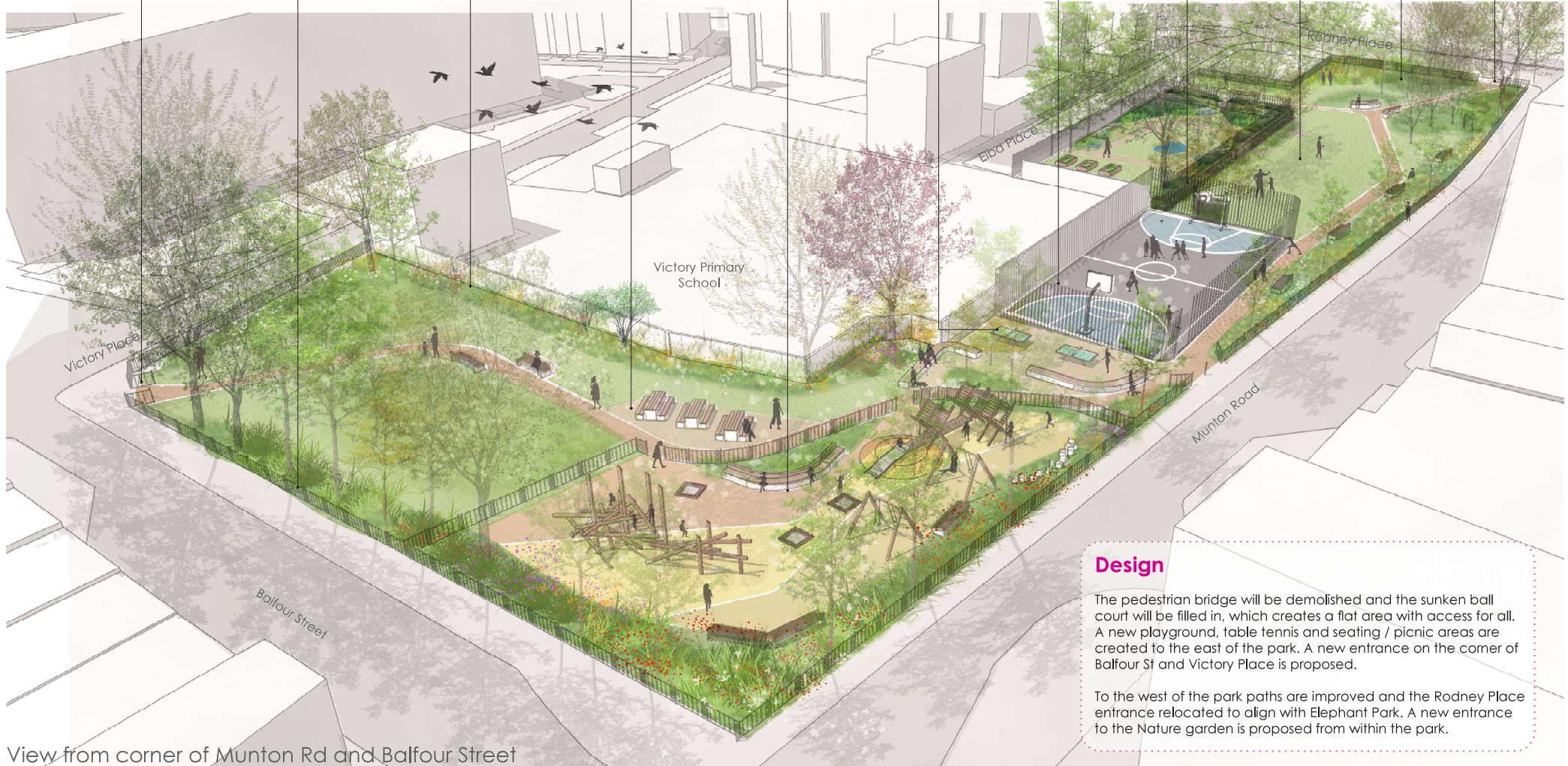
New ball court with focus on basketball use. Basketball hoops at both ends and football goal at one end only

Boundary to nature area improved with hedge/shrub planting with additional entrances from within the park. The high fencing will remain

New area of flat maintained grass created for residents to sit and relax, play games or exercise

New planting and biodiversity elements to west edge next to Rodney Place replacing current path and entrance

Improve footpath network to link to proposed new pedestrian crossing. New improved path surface materials and new seating



View from corner of Munton Rd and Balfour Street

Design

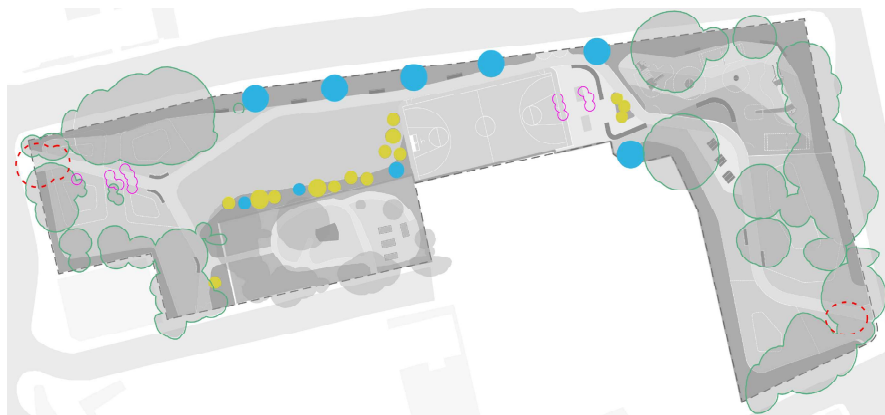
The pedestrian bridge will be demolished and the sunken ball court will be filled in, which creates a flat area with access for all. A new playground, table tennis and seating / picnic areas are created to the east of the park. A new entrance on the corner of Balfour St and Victory Place is proposed.

To the west of the park paths are improved and the Rodney Place entrance relocated to align with Elephant Park. A new entrance to the Nature garden is proposed from within the park.

Victory Community Park



Trees Planted, Relocated and Removed



- Trees to be retained and protected
- 3 Trees to be removed (Trees of lower quality)
- 14 Trees to be relocated to new position within the park
- 9 new trees to be planted
- New location for relocated trees

YOU ASKED

Public feedback from previous consultations

- Most people did not want the bridge to be kept in the design

- The majority said that a park accessible for all is important

- The suggestion of no longer locking the park received split opinion with people both in support and not in support of this idea

- There was significant support for sports areas for young people but concerns about the idea to no longer have a full ball-court and splitting the sports into separate areas. So we carried out further observation surveys of the ball-court and spoke to young people and local sports clubs and specialists.

- There was support for having more access to the nature garden but concerns that opening it up fully might increase anti-social behaviour in this area

WE DID

How those suggestions have shaped the final design

- We have removed the bridge from the design

- The sunken ball-court which is inaccessible to wheelchairs and people with reduced mobility will be infilled to create a flat accessible park

- As there remains a significant number of people with concerns about this, we'll keep the gates and won't be changing the locking regime as part of this project

- Feedback from young people and sports clubs supported the consultation feedback that a full length multi-sports ball-court was preferred so we have changed the design to include that. Basketball was also shown to be the most popular sport and that will be the focus of the ball-court.

- We have listened and will ensure the nature garden remains fenced with lockable gates. We have proposed 2 new gates into this area directly from the park to make access easier. What do you think?