

Have your
say on
parking in
your area

SE Bermondsey CPZ

Parking study - Aug/Sept 2019



 @lb_southwark  facebook.com/southwarkcouncil

Southwark
Council
southwark.gov.uk

Contents

▶ What is a parking study?	3
▶ What is a parking zone?	3
▶ How can I have my say?	4
▶ Why are we conducting a parking study now?	5
▶ What are the advantages of having a parking zone on my street?	6
▶ What are the disadvantages of having a parking zone on my street?	6
▶ When would the parking zone operate?	7
▶ What is the difference between an all day and a part day zone?	7
▶ Who can purchase a permit?	8
▶ Myth busting	9
▶ What happens next?	10
▶ Further information	11



What is a parking study?

A parking study is an opportunity for the council to assess the parking stress in a certain area by asking the local residents and businesses how they view parking on their street.

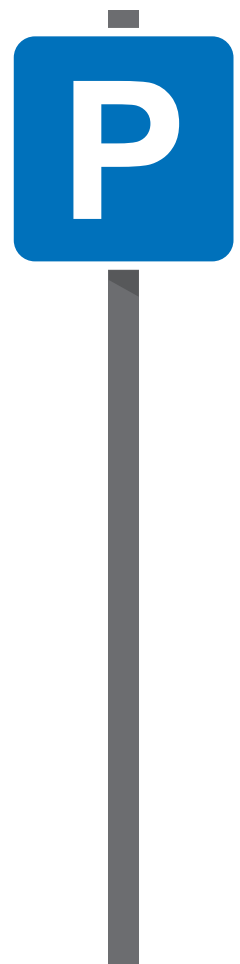
A questionnaire has been sent out to all postal addresses in the area asking whether you think a parking zone should be implemented on your street and if so, which days and during what times of the day.

It is important to respond to this consultation whether you own a vehicle or not. The council will analyse the responses on a road by road basis and present a report to the ward councillors and the decision maker with a recommendation based on your response on both days and hours of operation as well as the extent of the zone.

To help you understand what your road may look like if a parking zone is introduced, we have drafted a preliminary drawing which shows where parking bays can safely be provided and what type of bay might be appropriate. A copy of the preliminary proposed design is available online for your review at www.southwark.gov.uk/sebermondseycpz

We will consider all feedback to the proposed design and incorporate the design changes where feasible as part of our recommendations.

It is important to note that we conduct a review on any new zones within about six months of implementation so that the design and operation can be improved.



SE Bermondsey - parking study

What is a parking zone?

A parking zone is a network of streets covered by parking controls. Each street is marked out with either parking bays or double yellow lines.

Permit holders only - bays solely for the use of resident /business permit holders.

Shared use parking bays – bays which can be used on a pay by phone basis and by resident/business permit holders.

Disabled bays – bays to be used only by those in possession of a Blue Badge.

Double yellow lines – waiting restrictions which allow for active loading for up to 40 minutes and indicate where parking is deemed unsafe or obstructive.

How can I have my say?

By post

Complete the enclosed questionnaire and return it to our FREEPOST address found on the final page of this document.

Online

Complete the questionnaire online at www.southwark.gov.uk/sebermondseycpz

At our meeting

Come along and talk to officers on

Saturday 14 September 2019 at 1pm

**Rennie and Manor Estates Tenants Association Hall
Galleywall Road, SE16 3PB**

Study area: (On-street parking only)



Why are we conducting a parking study now?

The council has received a number of requests for parking controls to be introduced in your area as well as a petition from residents south of The Blue. Local residents are finding it very hard to park near their homes or to exit and enter their drives which is causing significant stress and inconvenience. We have also had reports of businesses finding it hard to park in the area and of commuters taking up space that could be used by visitors. Off street parking at The Blue will be managed separately by the housing parking team alongside the Good Growth Fund.

For the safety and convenience of local residents and businesses, the council would like to know whether you think parking could be improved in your area.

What are the advantages of having a parking zone on my street?

- ▶ Space is prioritised for local residents, businesses and their visitors.
.....
- ▶ Commuters will no longer be able to park on your street during the operating hours.
.....
- ▶ Improved access for emergency services and refuse vehicles.
.....
- ▶ 'Permit free' planning conditions can be placed on future developments so that parking stress is not increased by the construction of new residential properties.
.....
- ▶ Reduces the amount of cars parked on your street and improves air quality.
.....

What are the disadvantages of having a parking zone on my street?

- ▶ Those entitled to a permit must pay to park in the zone. This payment contributes to the enforcement of parking controls and any surplus must legally be spent on improving the public highway.
.....
- ▶ Parking can be displaced into nearby uncontrolled roads.
.....
- ▶ Parking zones are most effective at reducing commuter parking.
.....
- ▶ Street clutter (signs and lines).
.....

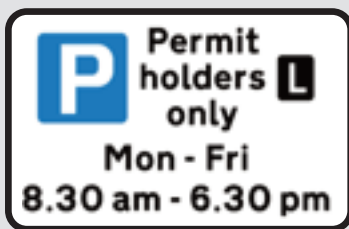
When would the parking zone operate?

It is up to you. The questionnaire asks what time you think the controls should operate. Officers will usually recommend the operating times that the majority of respondents ask for.

What is the difference between an all day and a part day zone?

All day parking zone

(e.g. 8.30am to 6.30pm)



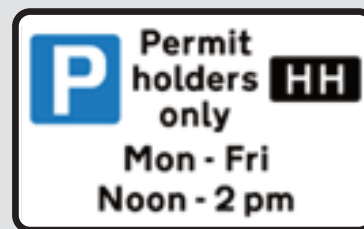
Usually successful in areas that have a high demand for parking throughout the day with pressure not just from commuters but from local attractions such as parks and leisure centres.

These zones give a high degree of priority for local residents, businesses and their visitors; reducing the negative effects of commuter parking.

Longer operating hours would mean that residents would need to have visitor permits for longer periods during the day.

Part day parking zone

(e.g. 12 noon to 2pm)



Usually successful in areas that have a sudden surge in demand for parking once a day, such as streets close to a commuter rail station.

Most of the day parking is free and unrestricted which can offer greater flexibility to those eligible for a permit and their visitors.

Part day controls are likely to result in higher pressure on parking particularly if the demand isn't just from commuters.

There is no difference in price for residents' permits between a part day and all day zone. For a part day zone, you would however need to buy fewer visitor permits which could save you money.

Who can purchase a permit?

Residents

- ▶ If you live within the parking zone and your vehicle is registered to that address, you will be able to buy a resident parking permit.
- ▶ Those living on estates have their own parking restrictions which would not change but you can still purchase a permit for on-street parking and have your say in this consultation.
- ▶ There is a maximum of three permits per household.
- ▶ Blue Badge holders get a 75% discount if they need to buy a residents' permit and a 50% discount on visitors' permits.
- ▶ Motorbikes and mopeds get a 75% discount on the price of a residents' parking permit.
- ▶ Owners of hybrid or electric vehicles get a 75% discount on the price of a residents' parking permit.

Prices →

1 month	3 months	6 months	12 months	Discounted 12 month permit
£15.74	£36.58	£67.83	£125	£31.25

The cost of an annual permit works out at 48p per day for the operation of a weekday parking zone

Businesses

- ▶ Businesses operating from an address within Southwark's parking zones may buy permits for vehicles that are essential to their business. They are not available if the vehicle is just used for commuting purposes.

Prices →

3 months	6 months	12 months	Electric vehicle
£180	£360	£590	£295 (50% discount)

On-street pay parking

- ▶ £2.75/hour (pay by phone)



Visitors

- ▶ Residents can buy visitor permits for use by their family, friends or tradespersons. You can buy permits even if you do not have a car yourself.

1x one hour stay	£1.60
1x five hour stay	£2.65
1x one day stay	£5.25
10x one hour stay	£10.55
10x five hour stay	£21.05
10x 1 day stay (1st purchase during year)	£26.30
10x 1 day stay (2nd and subsequent purchases)	£47.35

← Prices

50% discount for Blue Badge holders

Home care workers

- ▶ Home care workers from approved home care organisations can park while visiting their clients if they hold a permit.
- ▶ The permits are issued to the organisation and it is up to the organisation to ensure the permit is available to its home care workers. The permits can be transferred between staff members and each organisation can hold up to five permits.
- ▶ Each permit costs £125 for 12 months.

Professional health workers' permits

- ▶ Medical and health professionals can use these permits when making home visits to patients.
- ▶ This permit cannot be used by medical professionals as a convenient method of parking near their place of work. Each permit costs £125 for 12 months.

Permit costs correct at time of publication

For further information regarding parking permits in Southwark, please visit our website www.southwark.gov.uk/parkingpermits

Myth busting

Southwark Council is just trying to make money

No. Parking zones are introduced as a tool to manage the finite supply of parking space on our road network.

We must charge for parking permits to cover the operational costs of the zone. By law, any surplus on the parking account must be invested back into transport related improvements such as highway improvements and school crossing patrols.

This could be paid for with council tax

- ▶ Council tax and vehicle excise duty help pay for services that are available to the entire population such as education, social services and road maintenance.
- ▶ Parking zones only affect a local area and are expensive to set up and run.

The council have already made up their mind; my response won't make a difference

The council will analyse all responses on a road by road basis and make a recommendation to the decision maker accordingly.

The council must present all findings in an honest and transparent way. Any parking controls that we introduce will take into account the results of the consultation as well as existing highway safety issues in the proposed zone, feedback from emergency services, and our wider transport policies reflecting our responsibilities to air quality and active travel.

Please note that the boundary of this proposed zone is not fixed, it is possible that no zone or a smaller zone could be created depending on resident feedback through consultation, and physical constraints.

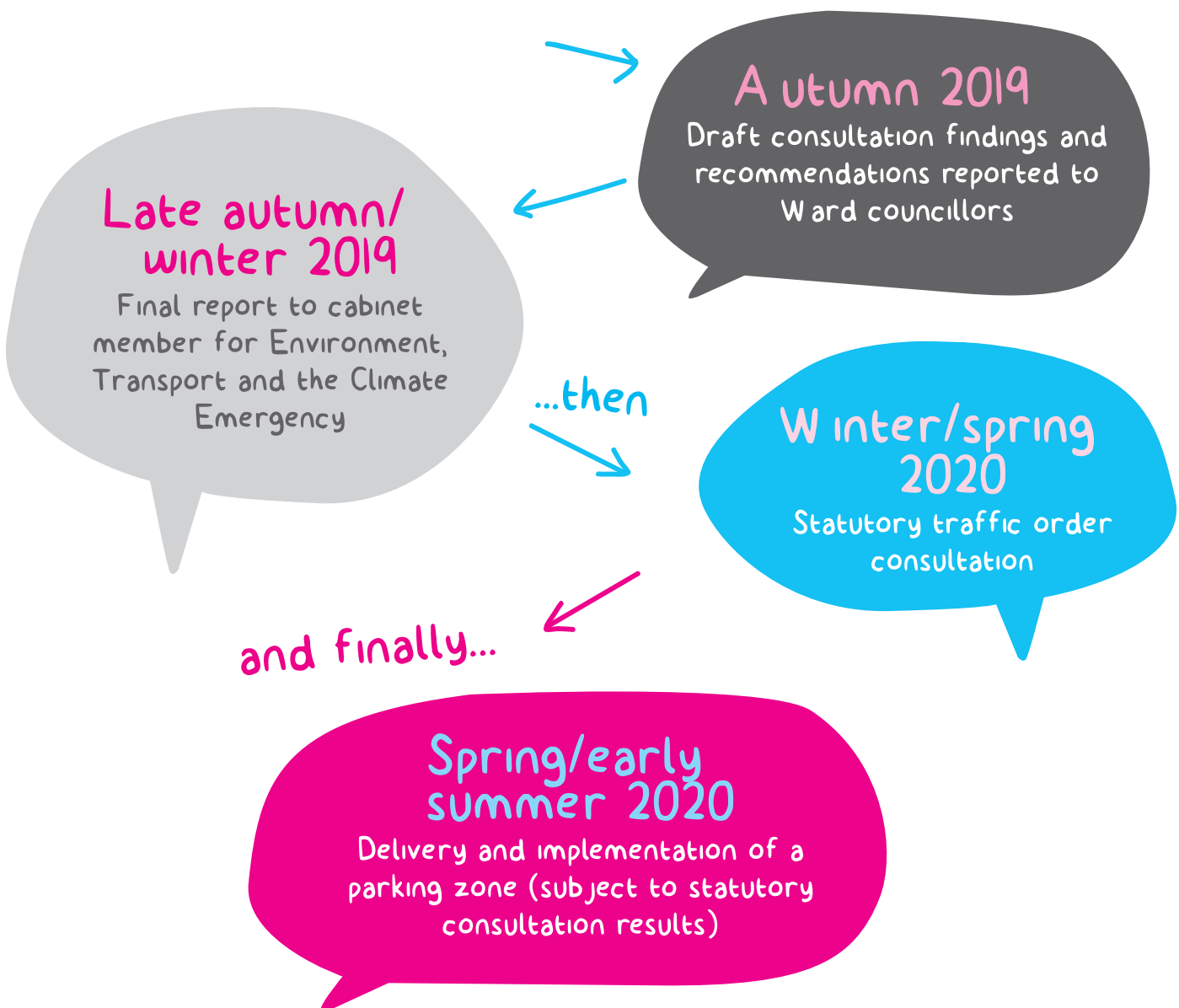
Visitors and Tradespersons will no longer visit my home

You will be able to book visitor permits online, by text and if you prefer, paper vouchers are available.



What happens next?

- ▶ We will analyse all the responses on a street by street basis and report the draft findings and recommendations to South Bermondsey Ward in Autumn 2019.
- ▶ The final report and any final design will be considered by the cabinet member for environment, transport and the climate emergency in late autumn/winter 2019.
- ▶ Should a parking zone be approved, we will write to you to explain what happens next, but the stages and expected delivery dates are summarised below.



Have your say

SE Bermondsey - parking study

11

Further information

www.southwark.gov.uk/parkingprojects

Telephone: 020 7525 0127

Email: highways@southwark.gov.uk

Postal responses should be sent to the following address:

FREEPOST RSDT-BHXK-SCAJ

Highways Division

Transport Projects

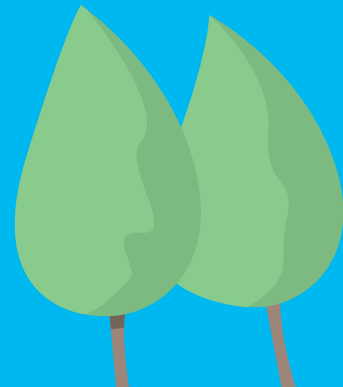
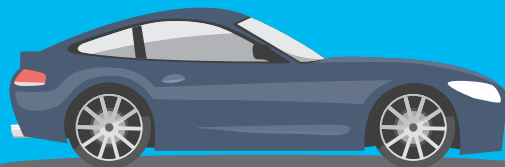
Floor 3, Hub 2

Southwark Council

PO BOX 64529

London, SE1P 5LX

Please respond by
Sunday
22 September 2019



To arrange a translation of this leaflet please take it to:

376 Walworth Road, SE16 2NG or Ground Floor, 122 Peckham Hill Street, SE15 5JR

For a large print version of this document please contact **020 7525 0127** or email:
highways@southwark.gov.uk

Please note that we are not able to respond to all comments individually.

**Have your
say on
parking in
your area**



 @lb_southwark  [facebook.com/southwarkcouncil](https://www.facebook.com/southwarkcouncil)

Southwark
Council
[southwark.gov.uk](https://www.southwark.gov.uk)