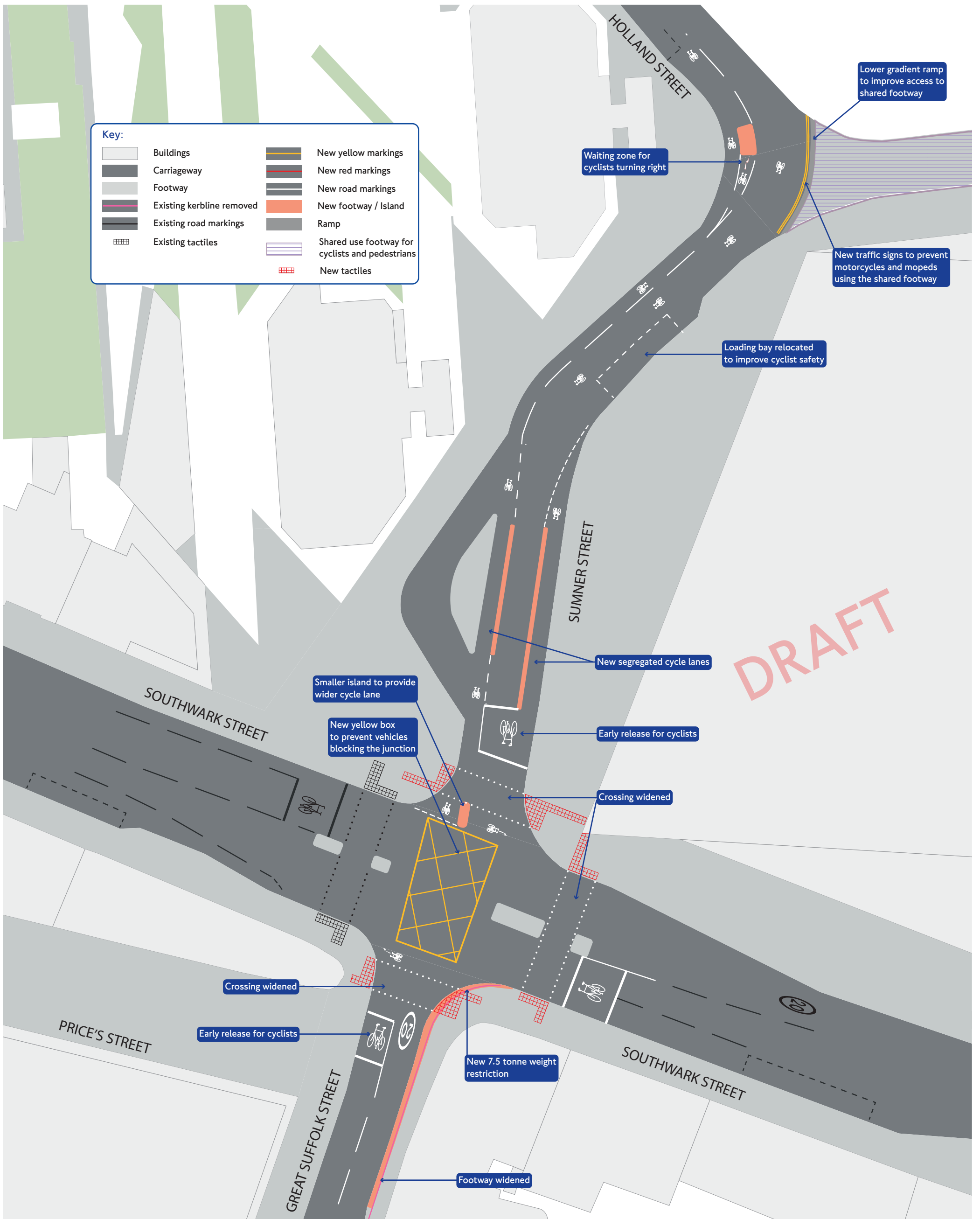


Cycleways

Southwark Street / Great Suffolk Street / Sumner Street



Key:

	Buildings		New yellow markings
	Carriageway		New red markings
	Footway		New road markings
	Existing kerblines removed		New footway / Island
	Existing road markings		Ramp
	Existing tactuals		Shared use footway for cyclists and pedestrians
			New tactuals

DRAFT

Lower gradient ramp to improve access to shared footway

Waiting zone for cyclists turning right

New traffic signs to prevent motorcycles and mopeds using the shared footway

Loading bay relocated to improve cyclist safety

New segregated cycle lanes

Smaller island to provide wider cycle lane

Early release for cyclists

New yellow box to prevent vehicles blocking the junction

Crossing widened

Crossing widened

Early release for cyclists

New 7.5 tonne weight restriction

Footway widened