

Little Dorrit Park and Peace Garden Consultation Summary

Prepared for Southwark Council
by
Bankside Open Spaces Trust

February 2021



50 Redcross Way, London, SE1 1HA
T: 020 7403 3393
e: info@bost.org.uk
Charity no.1085454

Contents

1. Background	2
2. Methods of consultation	2
2.1 Direct engagement	2
2.2 Online virtual consultations.....	3
2.3 Online surveys	5
2.4 Door-to-door questionnaires.....	5
3. Consultation responses	5
3.1 What people like	6
3.2 What people dislike.....	8
4. Conclusion and next steps.....	13
5. Appendices.....	15
5.1 Children’s ideas from July 2019 Consultation Event	16
5.2 Zoom presentations.....	17
5.3 Questionnaires.....	18
5.4 Posters	19
5.5 Ramboll graduate concept design ideas	20

Little Dorrit Park and Peace Garden | Consultation Summary

1. Background

Bankside Open Spaces Trust (BOST) is an environmental and volunteering charity. In 2020 it celebrated 20 years of protecting, preserving and enhancing parks, gardens and other amenities in London's SE1 and surrounding areas. BOST was set up with the aim of improving people's health and wellbeing by making where they live and work greener and more beautiful.

BOST manage and maintain open spaces, welcome volunteers from both the community and the corporate sector, run regular gardening groups, support park steering groups, organise and take part in public events and educational projects, and offer advice to others. It collaborates closely with local residents and businesses to champion green spaces.

The parks which BOST help to manage, have won more than 32 awards, including the UNESCO Man and Biosphere award, London in Bloom Champion of Champions and the MPGA London Spade for our community gardening partnerships.

Owing to its track record, local placement and its strong relationship with the local community, BOST were approached by Southwark Council to build on BOST's existing community network in the area to undertake consultation with local residents to understand what enhancements residents would like to see in Little Dorrit Park.

Funding for enhancements is to be provided through a Section 106 Agreement, related to the redevelopment of nearby Brandon House.

This report summarises the ideas which have been proposed by the community and local activists.

2. Methods of consultation

2.1 Direct engagement

Before the Covid-19 pandemic, Bankside Open Spaces Trust arranged a consultation event within Little Dorrit Park on 17th July 2019. It was advertised by posters displayed throughout the local area via direct letters to residents and local parents through local schools. BOST staff handed fliers to parents collecting pupils from the adjacent St Josephs and Cathedral primary schools as well as Charles Dickens school on Lant Street.



The event was assisted by the fine weather. BOST offered free refreshments and ran an art and crafts table, aimed at collating children's ideas through collage and poster making. Adults were offered free herb plants in exchange for offering their comments on the existing park and their ideas and aspirations for the space in the future. The event was organised and run by one consultant, four BOST staff members and a graduate from BOST's Future Gardener's scheme.



All participants were encouraged to leave comments on post-it notes under headings. A total of 57 individuals left responses on post-it notes, along with 22 collages/posters created by children; ideas were very diverse ranging from wildlife areas, ziplines, trampolines, carousels, a funfair to flying popcorn machines! Some of these young artists' pictures have been included in the appendices.

Participants were also invited to join the Friends of Little Dorrit Park (FOLD), established by BOST.

FOLD is intended to act as the hub for distributing information locally and will provide a forum for the evolving design process.

Following the initial consultation responses, Southwark Council met with BOST to discuss the results. It was agreed that further consultation was required in order to capture a wider audience of existing and potential park users.

2.2 Online virtual consultations

Owing to Covid-19 restrictions, BOST undertook two virtual consultation sessions using the online Zoom meeting platform on 28th October and 18th November 2020. The meetings were announced via BOST and Southwark Council's websites as well as via BOST's community network, social media and the Friends of Little Dorrit Park steering group. A downloadable link suitable for smartphones and other digital devices was used. Two online meetings were held in October and November 2020. BOST intended to hold another online meeting for parents and carers or to join local schools' online PTA meetings but this was unfortunately not possible to arrange. The Zoom presentation is included in the appendices.

**PUBLIC CONSULTATION
LITTLE DORRIT PARK
AND PEACE GARDEN.**

**Southwark Council and Bankside
Open Spaces Trust invites you to
take part in the Little Dorrit and
Peace Garden public consultation**

Little Dorrit playground and the Peace Garden pocket park is managed by Southwark Council and supported by Bankside Open Spaces Trust.

Named after Little Dorrit, a Charles Dickens character, the public playground and small park is situated just north of Marshalsea Road, off Borough High Street in the London Borough of Southwark. SE1.

Works to improve the park will begin later this year. Before then, we would like you to shape what these improvements could look like by giving us your views. This consultation is open to anyone who lives, works or visits the park.

**You can take part by filling in the
online questionnaire or joining the
online Zoom meeting or both:**

1. Please fill out the online questionnaire to tell us how it could be improved here: www.consultations.southwark.gov.uk/environment-leisure/little-dorrit-playground
Consultation closing date: 16th November 2020

2. Join us for a consultation meeting via Zoom on
Wednesday 28th October at 4:30

PM

www.zoom.us

Meeting ID: 859 9190 0853

Passcode: 630776

**Thank you for your time and
feedback!**

The 1.5 hour Zoom meetings were hosted by the Head of BOST's Parks and Community Team, one in the afternoon and one in the evening for participants' convenience. Participants were thanked for giving their time. The background to the park was explained; Little Dorrit playground and the Peace Garden pocket park is managed by Southwark Council and supported by Bankside Open Spaces Trust. It is named after Little Dorrit, a Charles Dickens character. The novel is about Amy Dorrit also known as Little Dorrit who was born and raised in Marshalsea Prison which used to be located just across Borough Road from the park.

It was explained that Section 106 funds had already been secured for the park but the total amount had yet to be confirmed and so participants' ideas and views would help determine the amount required. Works to improve the park and Peace Garden would likely begin in 2021. But before then, BOST and Southwark council wanted to gather the views of people who live and work in the area. It was emphasised that owing to the relatively short time for the meeting (1.5 hours), not all views would be able to be heard fully enough and therefore participants were urged to fill out the online questionnaire, so that BOST could get each participant's personal, in-depth views. Participants were invited to email their views to the BOST team as well.

Participants were shown views of the park and pictures of the general layout. It was emphasised that the whole layout of the park might be changed, not just park furniture and so participants were encouraged to 'think outside of the box'. Participants were asked initially to fill in and submit a poll. Then individual elements of the park were discussed in discussion groups under the following headings:

- **Play equipment:** did participants like the play equipment? Is it outdated? Would participants like more natural play equipment? Is there enough play equipment for certain age groups? What other suggestions did participants have?
- **Access and boundaries:** how could the layout of the park be improved? For example, should the children's play equipment be in an allocated area? Should there be a separate area for adults? Could the borough road entrance be more welcoming such as opening it up and taking down the fence? Could the alleyway be widened or incorporated into the park? Is better lighting or surfacing needed?
- **Benches:** did participants want to see more or less benches? Did they like the picnic style benches?
- **Greenery;** would participants like more plants and trees and more landscaping of the park?

- **The Peace Garden:** how could the garden be improved? Did participants like the mosaic? Dogs are allowed in the peace garden but not in Little Dorrit Park as it's a children playground. Did participants like this as a separate dog area? Should it be bigger or smaller?

Participants were thanked and reminded to fill out the online questionnaire.

2.3 Online surveys

As well as the Zoom meeting consultations, local residents were invited to fill out an online questionnaire (see web link used above). The closing date for the questionnaires was 16th November 2020 and BOST allowed 3 weeks for consultees to respond. Both BOST and Southwark Council promoted the consultation via their website, newsletters and social media platforms such as Facebook and Twitter. The questionnaire is included in the appendices.

2.4 Door-to-door questionnaires

Although BOST was not able to interact with people owing to Covid-19 restrictions, staff members invited local residents to participate in the consultation process by dropping questionnaires through doors at Pattison House, Babbington House, the Disney Street estate and Brandon House. Staff wore masks and gloves, maintained social distancing and followed Covid-19 guidelines to post questionnaires through doors and avoided face to face interaction. The Tenants and Residents Associations were contacted as well in case staff were not able to access blocks in order that the information could still be shared with residents. Paper form questionnaires could be filled in at residents' convenience and dropped through the Red Cross letter box. The box was marked with a sign saying. '**Little Dorrit Questionnaires. Please post here. Thank You.**'

There was also an option on the paper form to join the Zoom meetings and fill in the online questionnaire from the links on BOST's and Southwark Council's websites. In addition, the consultation was advertised on posters and leaflets which were installed and distributed in park notice boards, local shops, local estates and businesses. Posters are included in the appendices.

3. Consultation responses

It was clear that the most successful methods of consultation were via face-to-face interaction in the park (57 consultees) and via the online questionnaire (65 consultees). Following the completion of the four forms of consultation, the responses were collated and the following results produced.

3.1 What people like

“In 2002 I installed ten bronze plaques in the west corner of the park and I often stop to assess their condition.”

“The drinking fountain should remain to encourage the reduction in plastic bottles.”

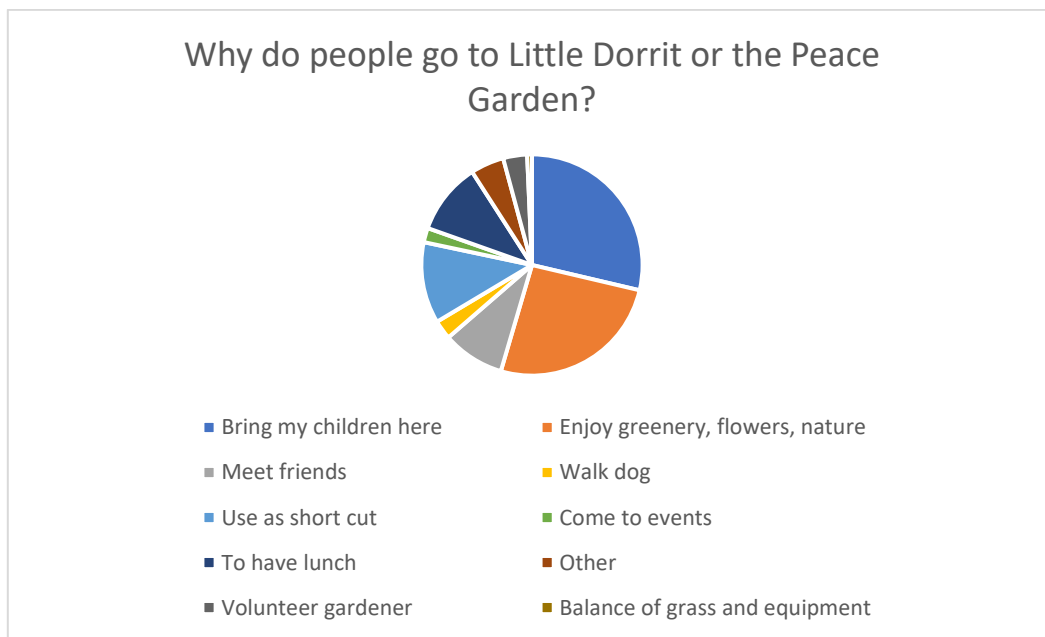
“It’s one of the best parks for under 5s in North Southwark”

“...the Peace Garden area is incredibly valuable to myself and many other local dog owners...Being enclosed means that a dog can be allowed to explore safely without interacting with any strangers (canine or human)...More and more I see dog restrictions in place across Southwark... contrary to what a large part of the community actually needs... safe, well maintained, enclosed dog exercise areas... a gate that securely closes and bins for poo bags... separate from people, paths and children’s play areas...many locals have found the Peace Garden as the perfect safe place to take a solitary bench stop on a dog walk...due to COVID and lifestyle changes we need you to consider that local dog owners (many of which are vulnerable people) rely on the safety and security of this tiny gated Peace Garden for a peaceful dog walk... for those of us who have no children or no family, our pet is often our

“The trees are lovely and I can see and appreciate the efforts made in Little Dorrit Park by gardeners.”

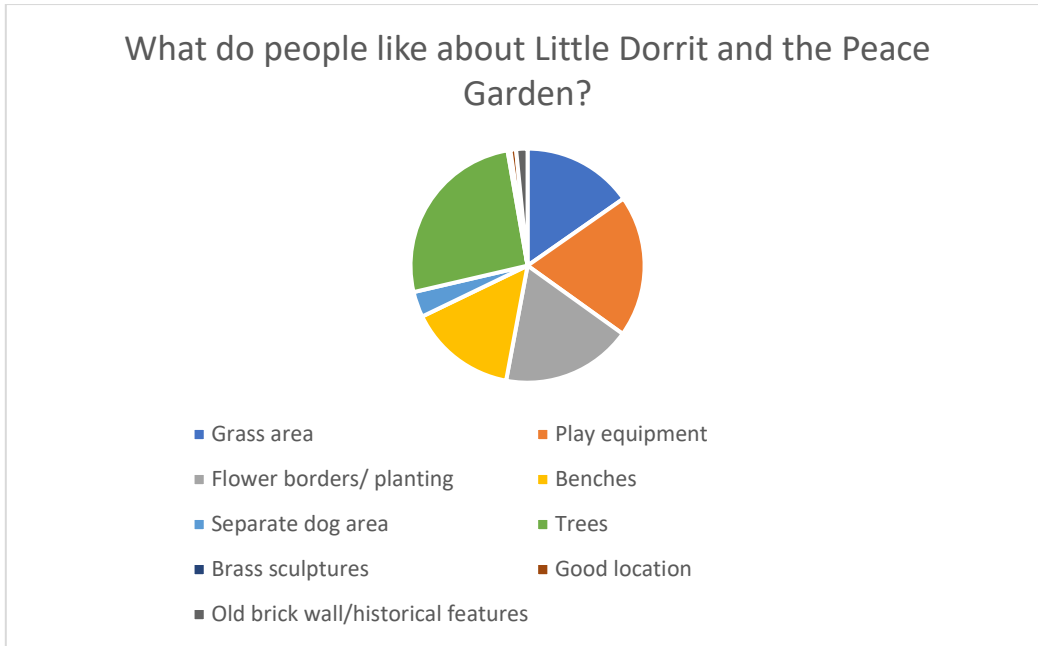
“Current patchwork fencing has its charm and I would keep the west wall of the Little Dorrit Park for historic reference.”

Of the 65 responses via the online questionnaire, 69% respondents felt safe to very safe in the park.



Overwhelming, of the 72 respondents via zoom meetings and the paper and online questionnaires, most said that they brought their children to the park or came to enjoy greenery, flowers and nature. Although this question was not specifically posed during the July face-to-face consultation session, all the 57 consultees were parents or carers and had brought children with them. It is also apparent that having lunch at the park and using it as a short cut were key reasons for visiting.

What do people like about Little Dorrit and the Peace Garden?



The elements of the park which people most enjoyed were the flowers, trees, seating, play equipment and grass. However, as noted below, a large proportion of respondents also felt that these should be improved and made some suggestions. A few people felt that the benches, although welcome, were in the wrong location or orientation. One person felt that the seating might pose a problem (possibly seen as attracting street drinkers) and asked for no more seating but this was the only exception. Certainly the protection of trees was very important to people, although a few advocated a little management of them to introduce more light at ground level especially along the dark alleyway adjacent to the park. From the survey narrative, it was clear that only 7 respondents were dog owners but the majority of respondents liked that the area was separate from the play area.

One respondent who was a dog owner gave a detailed response about the importance of having separate areas for dogs to be walked: *“More and more I see dog restrictions in place across Southwark... local dog owners (many of which are vulnerable people) rely on the safety and security of this tiny gated Peace Garden for a peaceful dog walk... for those of us who have no children or no family, our pet is often our sole companion.”*

One respondent acknowledged that the fencing and boundary treatments needed addressing but wanted see the walls of the garden preserved ‘for historic reference.’

3.2 What people dislike

"I don't like having street drinkers in the park...people are clearly buying and selling drugs..."

"...there is a lack of shelter...it's impossible for children to play on a sunny day..."

"The surfacing is worn...the tarmac is disintegrating...it makes scrapes worse than they need to be..."

"I don't like the street drinkers using the bushes as a toilet...often in front of the children...there are no toilets so children all wee in the bushes!"

"The play space is outdated and not really child friendly..."

"The fencing is worn and ugly and doesn't really serve any purpose...people can easily climb over after dark..."

"The Peace Garden....and dog area... people don't always want to sit there as others might think they are watching the children...please create area that doesn't overlook play areas"

"The L-shape of the park makes it difficult for parents to keep an eye on their children..."

"The park doesn't feel safe or clean...."

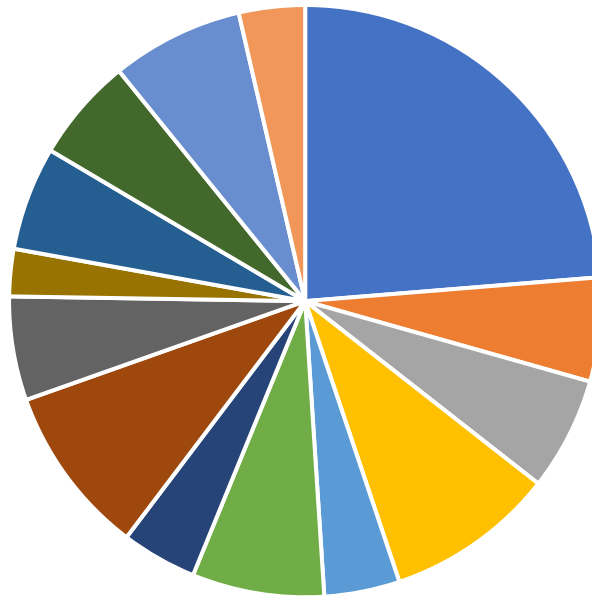
"...dogs walking into the park....intimidating and unsafe in general for children who play there."

"I haven't been for a while but there is sometimes a tent pitched and it is not a nice alleyway to walk down in the dark, I do cycle down it but it isn't friendly after dark.."

"I do not like the alleyway that leads alongside the park... very ugly and grey... I feel very closed in. When I walk down it in winter on my way home it is very dark and as narrow feel no escape routes. It is not a nice entrance to the Park. The area just off Borough High Street also needs to be opened up and some nicer planting, maybe take the walls down, as just an unused space at the moment."

Despite the number of positive responses (89) about the existing state of the park, there were almost as many (87) responses to the 'dislike' question and more diverse responses, indicating that there are many issues to address. As well as the comments summarised in the chart below, other responses were that: the flow in the park was poor (3), recycling and other bins were needed (3), it was too busy at lunchtime (3), and there was insufficient shelter from the sun (2). There was frustration from 6 respondents as *"there are no toilets"* leading to people *"urinating in the bushes."* Of the 65 consultees responding via the online questionnaire, 29% felt unsafe in the park.

What people dislike about Little Dorrit and the Peace Garden



- Street drinkers, drug dealers including at night/camping
- People using bushes as toilets
- Not enough seating/ seating in wrong place
- Not enough planting
- Not enough wildlife areas
- Outdated play equipment
- Grass is worn/ in wrong place
- Dark flooded alleyway/ poor link to Borough High Street
- Uneven/broken surfacing
- Scruffy appearance
- Poor lighting
- Dog park too close to children's play area and dirty
- Fencing broken/worn/ugly/ ineffective
- Vermin (pigeons/rats)

Across all consultation methods, the resounding concern (almost 25% of all respondents) was around the presence of street drinkers and drug dealers in and around the park. The narrative within the online questionnaire revealed that many people felt the fence was ineffectual since people simply broke into the park at night; one respondent called for the fence to be removed. The alleyway adjacent to the park was felt to be a poor route, especially at night and one respondent within the questionnaire narrative wrote that

"...the Park and Garden feel dystopian, worn, and uncared for. It also feels unsafe to visit alone, as a single woman. The Garden has a bizarre sunken pit (dried up paddling pool??), and uneven paving which is a safety hazard in terms of tripping. The Park has play equipment, which is great - but the equipment there is old, and looks well past its best. I would like to use the space more, but currently only really visit as a cut-through to walk other places, as why would I linger in such a depressing, unsafe place?"

Many respondents described this poor link from the High Street (9%) as well as the poor lighting in this area (6%) and also referred to the out-of-date play equipment (7%).

Many respondents whilst enjoying the greenery, flowers and nature in the space, did not feel that there was enough of it (13% respondents) and wanted more varied wildlife habitats, as described in detail by one respondent:

“Anything that reduces the area available to planting e.g. hard standing, sand. The amount of greenery in Southwark has been reduced drastically (e.g. there's much less grass around Elephant Park/Heygate Street than there used to be) and that's to its detriment. Ground feeding birds like sparrows and blackbirds (with their beautiful song) are denied their natural habitat, hedgehogs have nowhere to live...”

The dog area within the Peace Garden, whilst recognised as needed, was felt by some to not be in the correct position. People sometimes felt it attracted ‘miscreants’. Others who used it to relax felt uncomfortable as it was situated so close to the play area:

“...people don't always want to sit there as others might think they are watching the children...please create area that doesn't overlook play areas...”

There was an underlying theme within the consultation responses that the layout of the park needed overhauling since there are currently conflicting uses, poor sightlines and the park feels ‘disjointed.’ The surfacing both in the park and along the alleyway was seen as problematic and a hazard.

3.3 Ideas people have for improvements

“Very important to build upper body strength in kids as there is good opportunity for hanging (doing monkey bars) and climbing.”

“It would be nice to have the pathway through to the High Street next to the playground better lit and better paved...”

“Better connection to Borough High Street and that part of park better utilised and connected to rest of park...”

“The alley is called birdcage alley - should maybe have a design feature of birdcages...”

“It could be vastly improved by taking a more natural approach to the play equipment... wooden climbing structures and bark on the ground. This would be a more welcome green space retreat in an otherwise quite built up area than it is at present. More could also be done to make the grassed space more inviting with tables, tree trunks etc.”

“The train and some of the other equipment is too challenging and a bit dangerous. But I wouldn't like it to go too far in the other direction where the play structures are too abstract. Keep it fun for little kids. GMH Park by the Imperial War Museum is a good example.”

“I think a playground should stay but needs updating and should also incorporate other facilities such as more focus on plants and maybe growing vegetable spaces for the kids so it can also be educational / linked to the school?”

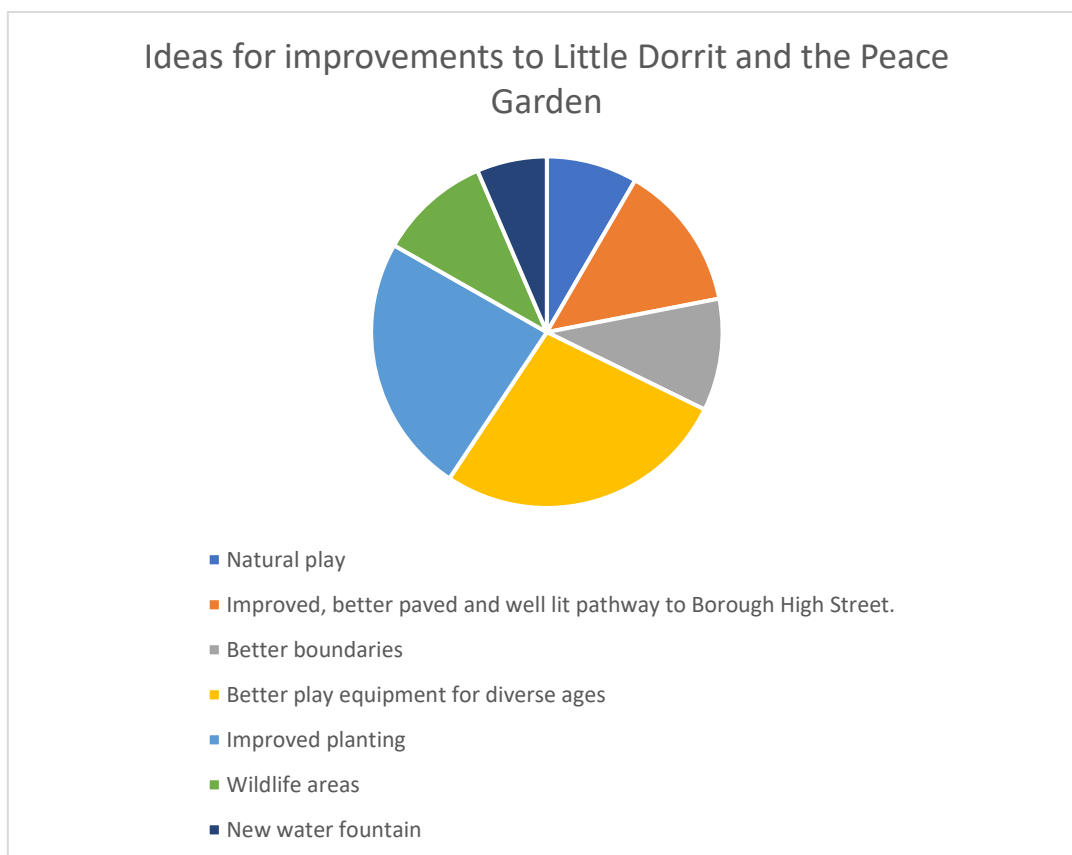
“The aesthetics of the park need to be improved. At present lots of different colours that are not pleasing to the eye. A more natural play area with natural colours such as greens and wooden play equipment would be nice. More of a natural theme. Flooring more of a homogenous colour or matching colours. Too many contrasting colours at moment..”

As well as the responses above and those summarised in the chart below (155 responses in total), other responses included:

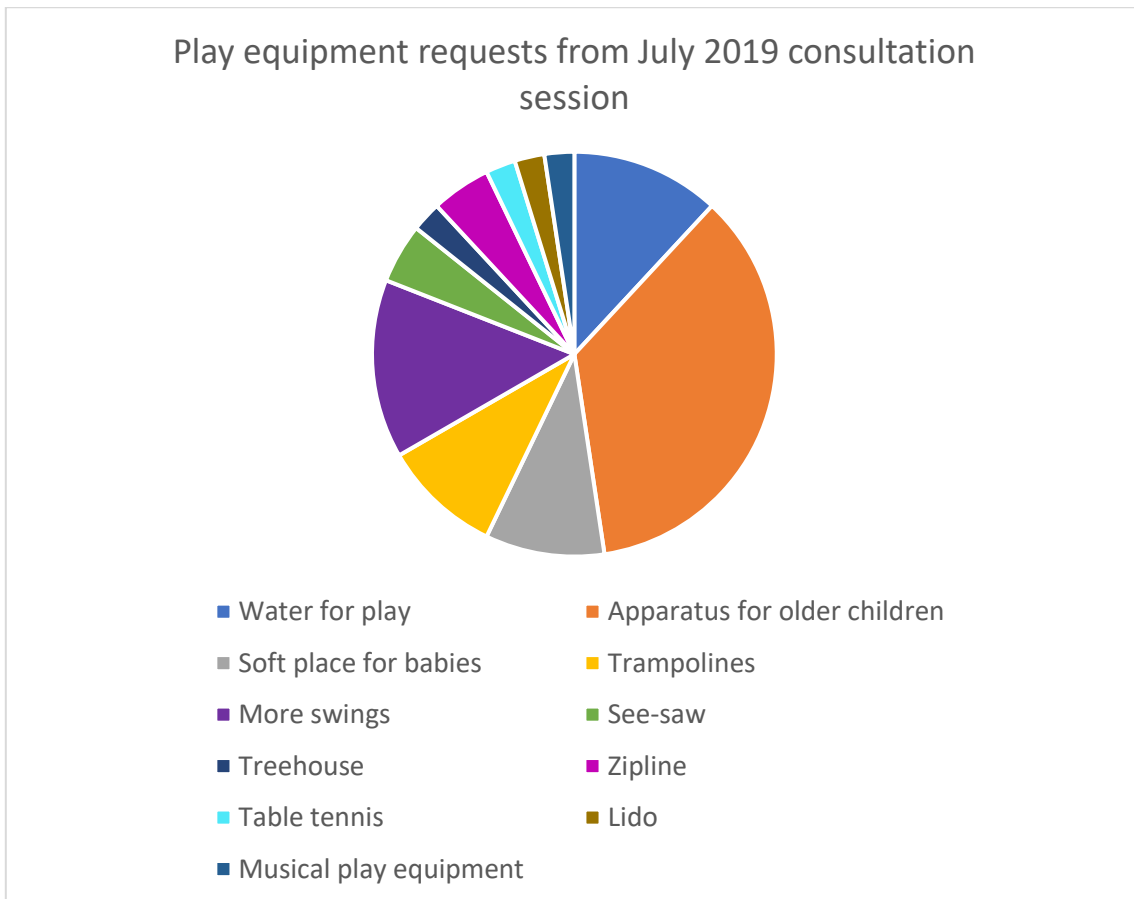
Less hard-standing (1), trampolines (5), table tennis (1), and making the mosaic more of a feature. Two consultees wanted to ensure that the historical elements of the park (such as the brick wall) were preserved in the new design. Others also wanted new and contemporary style fencing and boundary treatments. One respondent requested CCTV as they felt that it would discourage anti-social behaviour. More trees were requested by 6 respondents and a nature/history trail was requested by 5 respondents.

During BOST's Zoom consultation sessions, participants were shown local examples of parks to inspire discussion and ideas generation. Participants within these sessions liked features within King Stairs Garden, the water feature on Hatton Way which served as an important ecosystem and the different levels used in Mint Street park. Nearby Brandon House residents thought better lighting was need but were concerned about light pollution. They also wanted to ensure that any new design did not bring the play area closer to homes. Residents at Brandon House also wanted the gate, which separates their residences from the park, to be kept locked.

Overwhelming, most responses featured on the need for more play equipment for a variety of ages (27% of responses) and improved planting (24% of responses). In addition to new play equipment, there were specific requests from 8% of respondents for natural play features. Interesting, when the 57 respondents in July 2019 were asked about which play equipment they would specifically like to see, 36% requested equipment for older children, compared to just 4% of respondents in the November 2020 online questionnaire (coincidentally both had the same number of respondents).



In the July 2019 on site consultation, participants were very specific about the types of play equipment they would like. Apparatus for older children (e.g. climbing equipment, trampolines, bigger slides and ziplines) was the most requested. ‘Soft spaces’ for babies were mentioned several times as were water for playing and more swings. A few respondents also asked for table tennis, a treehouse, a see saw and basketball.



The other non-play related requests included an improved, better paved and well-lit pathway to Borough High Street (14% of responses), better boundaries and wildlife areas (requested by 10% of respondents), and 6% of respondents requested new drinking fountains.

The BOST team’s impression having undertaken the consultation, is that in general many visitors are uncomfortable that adults have to walk through the kids area to eat lunch, meet friends etc. People generally felt that ‘if you don’t have kids you shouldn’t be there.’ This aspect needs to be addressed as part of the design stage; the space should be able to perform a variety of functions without making visitors feel unwelcome or uncomfortable.

4. Conclusion and next steps

Participants in all consultation sessions appeared to come to similar conclusions. There is consensus across respondents that the following criteria are used when designing Little Dorrit and the Peace Garden:

- Improve the play equipment for children of diverse ages and consider alternatives such as natural play;
- Create new planted areas, wildlife areas and improve the condition of the grass;
- Better layout of the spaces to improve flow and sightlines – this may also serve to reduce conflict between users, ensure that the space works for all and that visitors made to feel welcome and comfortable irrespective of whether they are visiting the garden with children, are wanting to find a quiet solitary space for reflection, are walking their dog, eating lunch with colleagues etc;
- Improve boundary treatments and access to and from the High Street – participants specifically requested that any new design should also encompass the alleyway and improve routes to and from the park;
- Improve lighting;
- Incorporate historical elements/ a nature/ history trail within the design;
- Surfacing needs addressing;
- Maintain a separate dog area and an area for adults without children which does not overlook the play space(s);
- Consideration of nearby residents' homes and the balance between improving the community offer and lighting, whilst preserving residents' peace

The next stage - creating a concept design - needs consideration. BOST would advocate continuing to work with the community group through the Friends of Little Dorrit (FOLD) to establish a concept design which is shared with the community.

In addition, BOST have an established relationship with Ramboll, a leading engineering, architecture and consultancy company. Every year, graduate employees are giving a project to design and they like to work with BOST as they enjoy the challenge of designing outdoor spaces in consultation with the community. After the initial consultation in July 2019, the results were shared with Ramboll and they created a series of designs. Graduates are encouraged to be as innovative as possible and to 'think outside the box'. The ideas are varied and may serve as a springboard to assist the design process for Little Dorrit park and the Peace Garden. The graduates teams' designs are included in the appendices.

It is also recommended that designs adhere to the following guidance on designing public realms which has recently been published by the GLA:

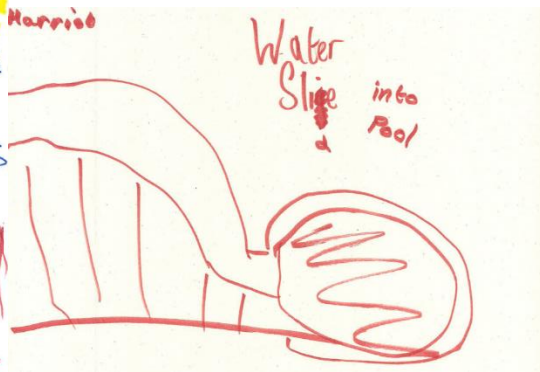
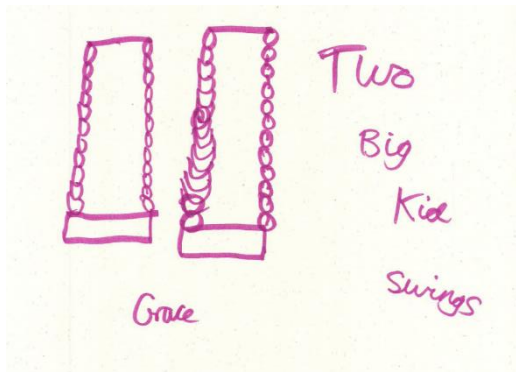
https://www.london.gov.uk/sites/default/files/expanding_londons_public_realm_combined_final.pdf

and supporting documentation, including:

https://www.london.gov.uk/sites/default/files/ggbd_making_london_child-friendly.pdf

5. Appendices

5.1 Children's ideas from July 2019 Consultation Event



5.2 Zoom presentations

Southwark Council wants your views to shape improvements to Little Dorrit Park and Peace Garden SE1.



Please fill out the online questionnaire to tell us how the Park could be improved and what you would like to see there :

<https://consultations.southwark.gov.uk/environment-leisure/little-dorrit-playground/>
 Consultation closing date: 16th Nov 2020

Any further ideas ?

Email: info@bost.org.uk
 Little Dorrit Consultation

BANKSIDE OPEN SPACES TRUST

Southwark Council

Access and boundaries



Benches and Greenery



Play Equipment



Peace Garden



5.3 Questionnaires

15. Ethnic Background

- | | | |
|--|--|--|
| <input type="checkbox"/> White British | <input type="checkbox"/> Mixed White/Black Caribbean | <input type="checkbox"/> Pakistani |
| <input type="checkbox"/> White Irish | <input type="checkbox"/> Mixed White/Black African | <input type="checkbox"/> Bangladeshi |
| <input type="checkbox"/> Other White | <input type="checkbox"/> Mixed White/Asian | <input type="checkbox"/> Any other Asian |
| <input type="checkbox"/> Black British | <input type="checkbox"/> Other mixed | <input type="checkbox"/> Latin American |
| <input type="checkbox"/> Black Caribbean | <input type="checkbox"/> Indian | <input type="checkbox"/> Traveller |
| <input type="checkbox"/> Black African | <input type="checkbox"/> Bengali | <input type="checkbox"/> Eastern European |
| <input type="checkbox"/> Other Black | <input type="checkbox"/> Chinese | <input type="checkbox"/> Any other ethnicity |

16. Do you have a disability?

- If Yes, please tick the box or boxes below that best describe the nature of your impairment(s):
- | | | |
|--|--|--|
| <input type="checkbox"/> Yes | <input type="checkbox"/> Hearing/vision | <input type="checkbox"/> Learning disability |
| <input type="checkbox"/> No | <input type="checkbox"/> Physical/mobility | <input type="checkbox"/> Long-term illness or health condition |
| <input type="checkbox"/> Prefer not to say | <input type="checkbox"/> Mental health | <input type="checkbox"/> Other |

17. Religion or belief

- | | | | |
|------------------------------------|---------------------------------|-----------------------------------|--------------------------------------|
| <input type="checkbox"/> Christian | <input type="checkbox"/> Hindu | <input type="checkbox"/> Jewish | <input type="checkbox"/> No religion |
| <input type="checkbox"/> Sikh | <input type="checkbox"/> Muslim | <input type="checkbox"/> Buddhist | <input type="checkbox"/> Other |

18. Is your Gender Identity the same as the sex you were assigned to at birth?

- Yes No Prefer not to say

19. Pregnancy or maternity: Are you currently pregnant and/or on maternity leave?

- Yes No

20. Did you find this consultation clear and easy to complete?

- Very easy Easy Not sure Unclear Very unclear

CLOSING DATE
16 NOVEMBER
2020

ALMOST DONE!

21. If you would like to be kept up to date about the consultation and our plans to improve Little Dorrit and Peace Garden, please provide your name and email address.

Name

Email

Thank you for your views

Privacy Statement: Southwark Council uses your personal data to record your response to the consultation. Section 1 of the Localism Act 2011 allows us to do this. The council does not require your permission to process your data and failure to tell us your information may mean that we are unable to process your response. Your personal information will only be used by our Parks Team and Bankside Open Spaces Trust, and will be destroyed after four years. If you are concerned about how the council uses your personal data or would like to enquire about the personal information we hold on you, please contact us via ops@southwark.gov.uk or on 020 7525 5000. More information about your rights is available on our website, or via the Information Commissioner (www.ico.org.uk).

Bankside Open Spaces Trust, Charity No. 1085454. www.boat.org.uk

PUBLIC CONSULTATION SOUTHWARK COUNCIL WOULD LIKE YOUR VIEWS TO SHAPE IMPROVEMENTS TO LITTLE DORRIT PLAYGROUND AND PEACE GARDEN

CLOSING DATE
16 NOVEMBER
2020

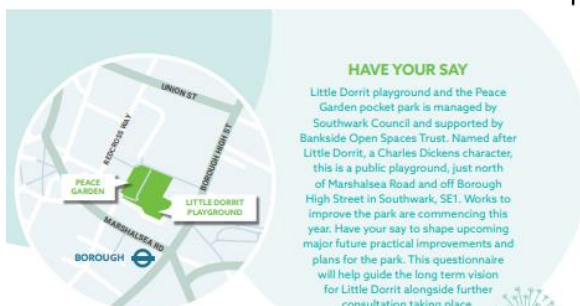


COMPLETE IT ONLINE
[www.consultations.southwark.gov.uk/
environment-leisure/little-dorrit-playground](http://www.consultations.southwark.gov.uk/environment-leisure/little-dorrit-playground)

OR DELIVER BY HAND/POST TO
Letterbox on office wall
Red Cross Garden
50 Redcross Way
SE1 1HA

BANKSIDE
OPEN SPACES
TRUST

Southwark
Council
southwark.gov.uk



HAVE YOUR SAY

Little Dorrit playground and the Peace Garden pocket park is managed by Southwark Council and supported by Bankside Open Spaces Trust. Named after Little Dorrit, a Charles Dickens character, this is a public playground, just north of Marshalsea Road and off Borough High Street in Southwark, SE1. Works to improve the park are commencing this year. Have your say to shape upcoming major future practical improvements and plans for the park. This questionnaire will help guide the long term vision for Little Dorrit alongside further consultation taking place.

QUESTIONNAIRE

1. Why do you go to Little Dorrit or Peace Garden?

Please tick all that apply

- | | | |
|--|--|--|
| <input type="checkbox"/> Bring my children here | <input type="checkbox"/> Lunch | <input type="checkbox"/> Other (please tell us more) |
| <input type="checkbox"/> Enjoy greenery and nature | <input type="checkbox"/> Walk my dog | |
| <input type="checkbox"/> Meet friends | <input type="checkbox"/> Come to events here | |
| <input type="checkbox"/> As a short cut | <input type="checkbox"/> Never visited | |

2. What do you like about Little Dorrit Park or Peace Garden at present?

Please tick all that apply

- | | | |
|--|--|--|
| <input type="checkbox"/> Grass area | <input type="checkbox"/> Benches | <input type="checkbox"/> Other (please tell us more) |
| <input type="checkbox"/> Dog area | <input type="checkbox"/> Trees | |
| <input type="checkbox"/> Children's play equipment | <input type="checkbox"/> Flower borders/planting | |

3. What do you dislike about Little Dorrit Park or Peace Garden and how could it be improved?

4. How safe do you feel when visiting the Park?

- Very safe Unsafe (if unsafe please explain why?)
 Safe

5. What do you think of the play equipment at present?

- | | |
|--|--|
| <input type="checkbox"/> More play equipment | <input type="checkbox"/> Play equipment for under 5s |
| <input type="checkbox"/> Less play equipment | <input type="checkbox"/> Play equipment for 5-9 |
| | <input type="checkbox"/> Play equipment for 10-14 |

6. Would you like any particular play equipment at this site?

7. Which new facilities would you like?

Please tick all that apply

- | | | |
|---|---|--|
| <input type="checkbox"/> Mobile catering | <input type="checkbox"/> Lawn area | <input type="checkbox"/> Fenced dog area |
| <input type="checkbox"/> More benches/picnic area | <input type="checkbox"/> Nature signage | <input type="checkbox"/> Drinking fountain |
| <input type="checkbox"/> Art sculptures | <input type="checkbox"/> Signage on history | <input type="checkbox"/> An area for adults without children |
| <input type="checkbox"/> Natural play features | <input type="checkbox"/> More trees | <input type="checkbox"/> Other (please tell us more) |
| <input type="checkbox"/> More flowers/planting | <input type="checkbox"/> Recycling bins | |

8. Would you like more social activities in the park?

Please tick all that apply

- | | |
|--|--|
| <input type="checkbox"/> Wildlife activities | <input type="checkbox"/> Children's play activities |
| <input type="checkbox"/> Community events | <input type="checkbox"/> Volunteer gardening sessions to maintain the park |

EQUALITIES MONITORING

9. Your name

10. Are you a:

- | | | |
|---|---|---|
| <input type="checkbox"/> Local resident | <input type="checkbox"/> Representative of a community of voluntary group | <input type="checkbox"/> Other (please specify) |
| <input type="checkbox"/> Local business | | |

11. If you live in Southwark, what is your postcode?

- | | | | |
|------------------------------|-------------------------------|-------------------------------|---|
| <input type="checkbox"/> SE1 | <input type="checkbox"/> SE17 | <input type="checkbox"/> SE22 | <input type="checkbox"/> SE26 |
| <input type="checkbox"/> SE5 | <input type="checkbox"/> SE19 | <input type="checkbox"/> SE23 | <input type="checkbox"/> Other (please specify) |
| <input type="checkbox"/> SE8 | <input type="checkbox"/> SE21 | <input type="checkbox"/> SE24 | |

12. Age

- | | | | |
|-----------------------------------|--------------------------------|--------------------------------|--------------------------------|
| <input type="checkbox"/> Under 16 | <input type="checkbox"/> 25-34 | <input type="checkbox"/> 55-64 | <input type="checkbox"/> 85-94 |
| <input type="checkbox"/> 16-17 | <input type="checkbox"/> 35-44 | <input type="checkbox"/> 65-74 | <input type="checkbox"/> 95+ |
| <input type="checkbox"/> 18-24 | <input type="checkbox"/> 45-54 | <input type="checkbox"/> 75-84 | |

13. Sex

- Male Female

14. Sexual Orientation

- | | | |
|--|-----------------------------------|--|
| <input type="checkbox"/> Heterosexual/straight | <input type="checkbox"/> Gay man | <input type="checkbox"/> Other |
| <input type="checkbox"/> Lesbian/gay woman | <input type="checkbox"/> Bisexual | <input type="checkbox"/> Prefer not to say |

5.4 Posters

HAVE YOUR SAY ON IMPROVEMENTS TO LITTLE DORRIT PARK AND PEACE GARDEN.



Southwark Council wants your views to shape improvements to Little Dorritt Park and Peace Garden SE1.



Please join the Zoom consultation led by BOST: Wed 28th October 4:30pm. Details below. All Welcome.

ZOOM Meeting ID: **Password:**

Further details or to fill out a consultation questionnaire visit:
www.southwarkcouncil/

Bankside Open Spaces Trust, Redcross Garden, 50 Red Cross Way, London SE1 1HA. www.bost.org.uk. Charity reg: 1085454.



PUBLIC CONSULTATION LITTLE DORRIT PARK & PEACE GARDEN

Southwark Council wants your views to shape improvements to Little Dorritt Park & Peace Garden SE1



Please fill out the online questionnaire to tell us how the Park could be improved and what you would like to see there

www.consultations.southwark.gov.uk/environment-leisure/little-dorritt-playground

Consultation closing date: 16th November 2020

Bankside Open Spaces Trust, Redcross Garden, 50 Red Cross Way, London SE1 1HA. www.bost.org.uk. Charity reg: 1085454.



5.5 Ramboll graduate concept design ideas

LITTLE DORRIT PARK

RECONNECTING THE LOCAL COMMUNITY.

GROUP 01: BEN FRAMPTON, CALLUM MACKENZIE, MAIGA WINZENREID, MAXIME LABE & WILL HARRISON



The redevelopment of Little Dorrit Park endeavours to reconnect the local community by encouraging creativity through education, events and play. Striving to preserve the green, open space, the scheme will invite children and adults of all ages to explore and make use of the park time and time again.

Educational Mural

An educational mural will give local schools and artists the opportunities to creatively engage with the park.



Event Space

A pavilion creates a focal point in the park with an innovative green roof. It provides a space for events, activities and where people can meet.



Coffee Bar

The café will create revenue for BOST and encourage people to stay in the park for longer periods of time. This will greatly improve the atmosphere of the park.



Sensory Garden Theme

The sensory theme creates a calming atmosphere throughout the park and engages all of the senses. This will attract a wide range of demographics.



Adventure Playground

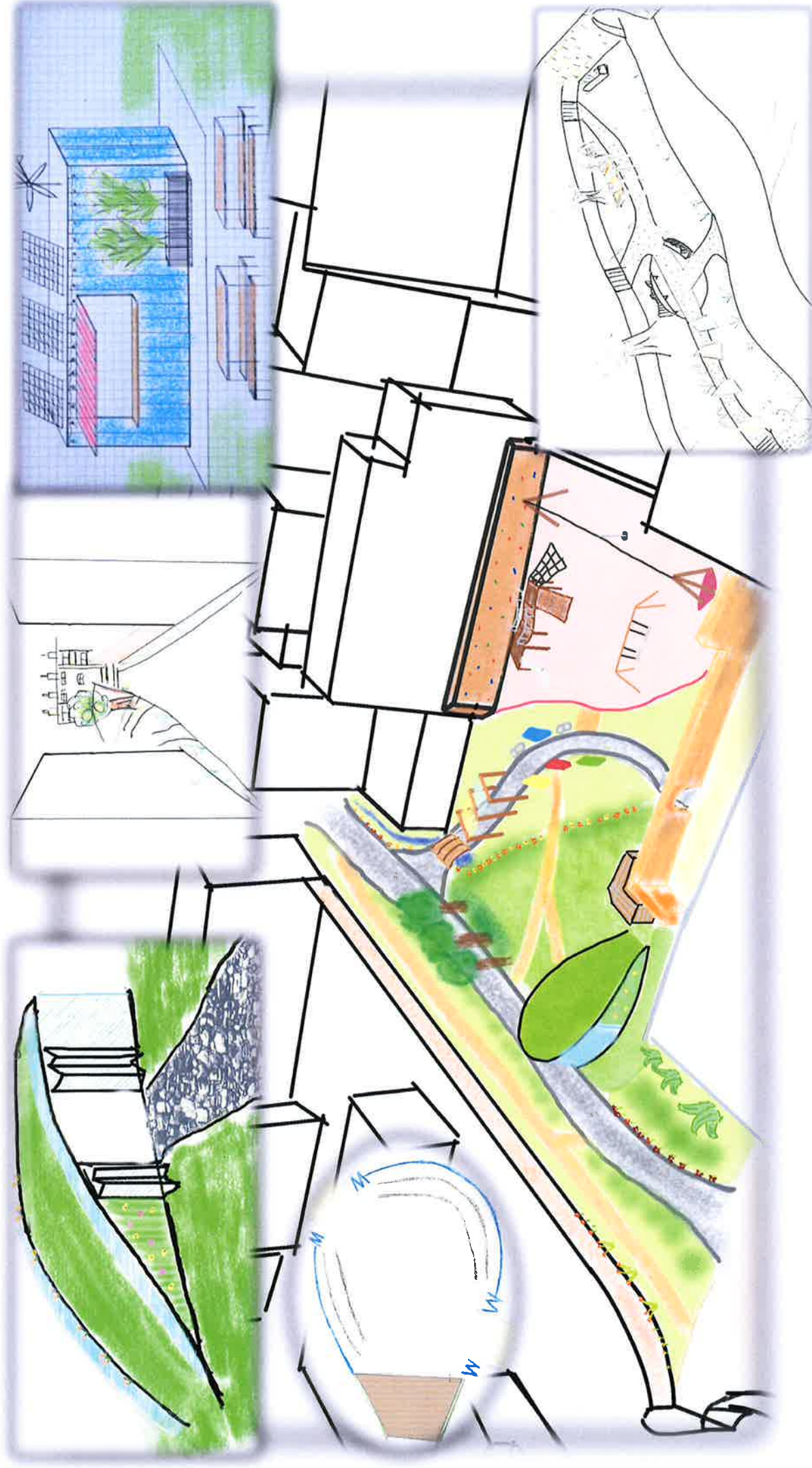
This timber play area links well with the green space and offers equipment for younger children plus a zip line and bouldering wall for older children.



LITTLE DORRIT PARK

RECONNECTING THE LOCAL COMMUNITY.

GROUP 01: BEN FRAMPTON, CALLUM MACKENZIE, MAIGA WINZENREID, MAXIME LABE & WILL HARRISON



THE STREET

FOR A BETTER-CONNECTED COMMUNITY

GROUP 02: STEVE BROWN, CLAUDIA ALVARENGA, CHI WAN, WILL HURRELL, CIAN GRACE, TINA BURTON

RAMBOLL

The **Little Dorrit Park** Redevelopment Project is an opportunity to create an open, biodiverse space that **connects** and **enhances** local users.

The space is located just north of Borough Underground Station, London, connecting two local schools, residential housing and amid local and global businesses alike. The **diversity** of the park's usage provides the chance to significantly impact and improve this **thriving local community**.

Through deep understanding of the local stakeholder needs, rigorous studies into **site constraints** and **sun** multiple iterations of layout topography and **sun path analysis**, we have developed a scheme that **maximises site potential** - "The Street."

The Street is a green walkway lined with trees and canopied by lights. At The Crossing a series of arches constructed from **sustainably sourced timber** form a **social hub** where all park users can connect.

The park and amphitheatre are locked during the night to **enhance security**, with the street left open and well lit.

At Ramboll we pride ourselves on being truly **client-centric**; and so we devised a **strategic phasing plan** to ensure that "The Street" is a sustainable and commercially viable design.

Better Connected, Better Together

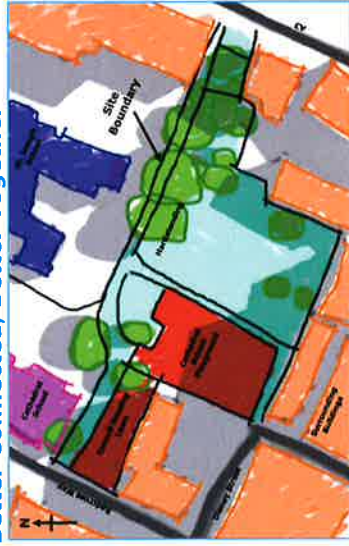


Figure 1 Site Constraints

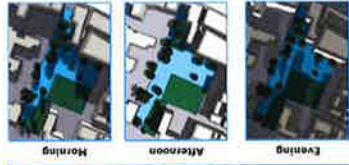


Figure 2 Design Layout Concepts

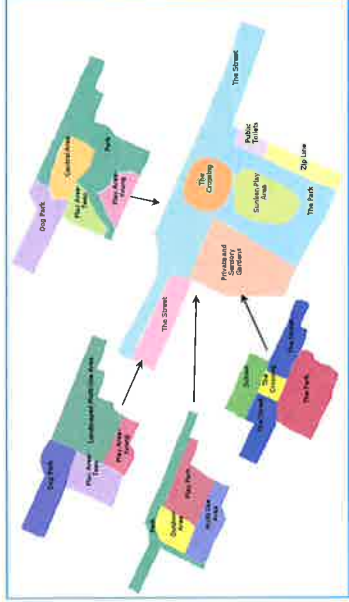
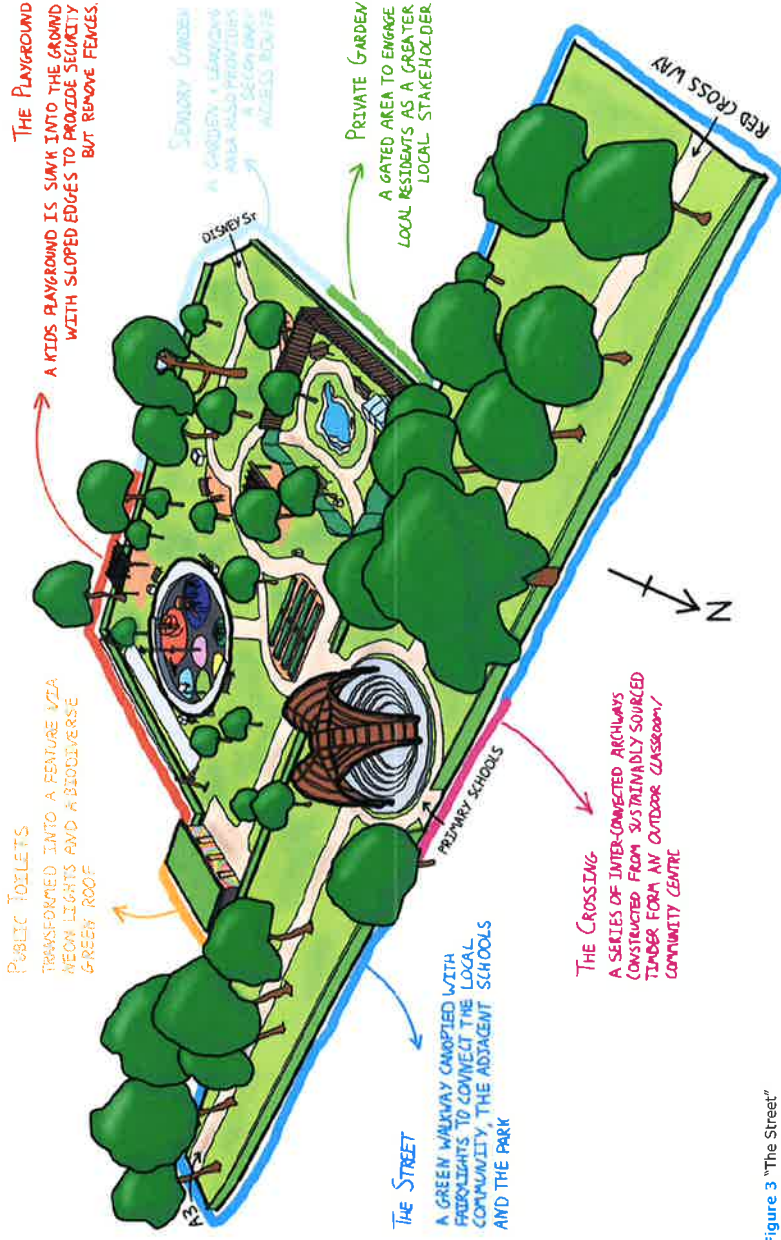


Figure 3 "The Street"



Figure 4 Strategic Phasing Plan

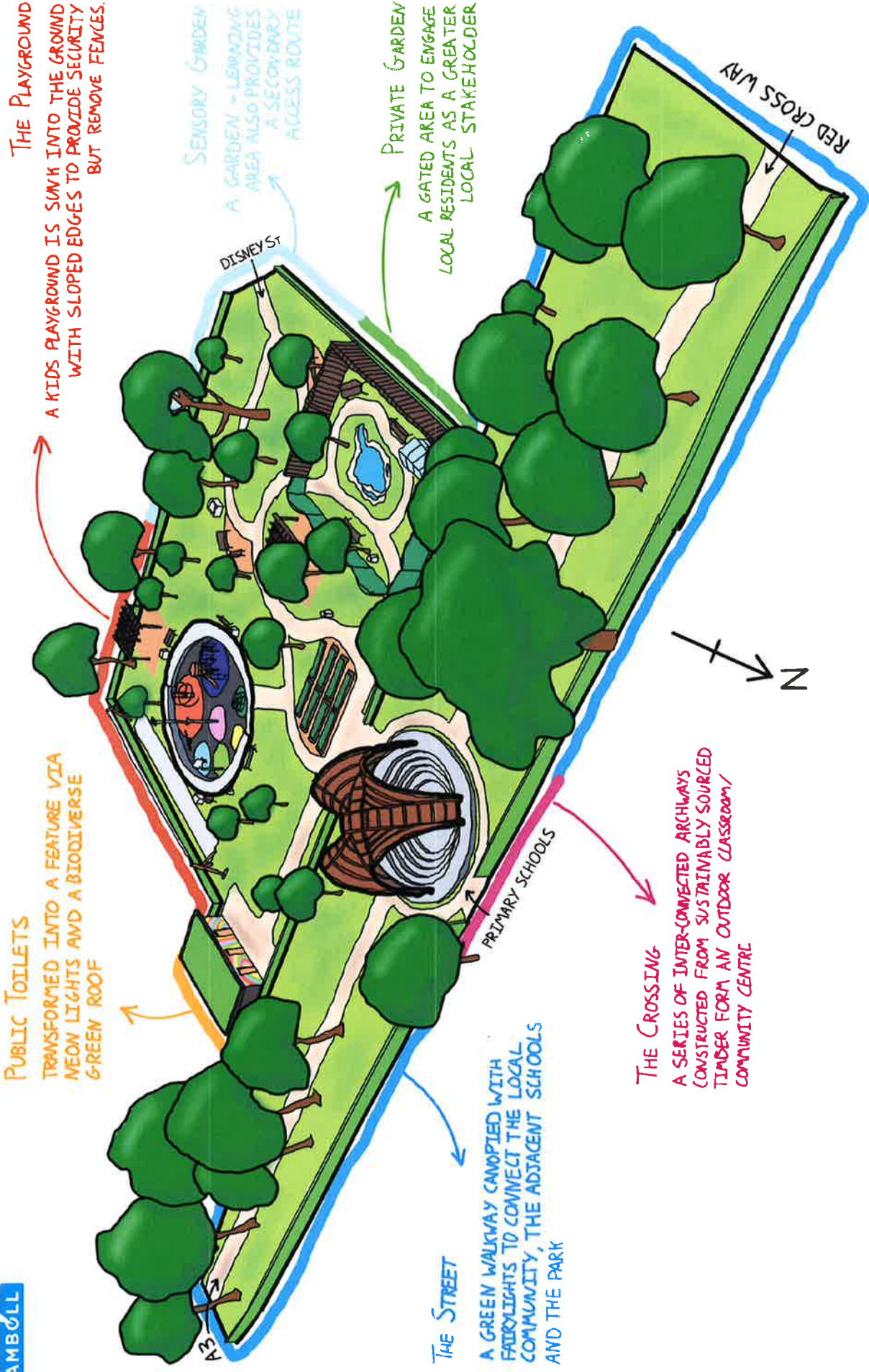


THE STREET

FOR A BETTER-CONNECTED COMMUNITY

GROUP 02: STEVE BROWN, CLAUDIA ALVARENGA, CHI WAN, WILL HURRELL, CIAN GRACE, TINA BURTON

RAMBOLL



LITTLE DORRIT PARK

AN ENTERTAINING ECOHAVEN IN THE HEART OF LONDON.

GROUP 03: JULIA THOMPSON, FRED BROWN, JACK RUSHTON, JODIE HANNAH, DAVID FOX, TOMASZ CIESELSKI

RAMBOLL

OUR VISION

To create an **educational** and **entertaining** **ecohaven**, encouraging **wildlife** to return to this busy corner of London and bringing the **community** together.

Core Issues:

- ANTI-SOCIAL BEHAVIOUR
- CLEANLINESS AND LACK OF AMENITY
- UNTAILORED TO USERS AND COMMUNITY

Early Design Considerations:

We have **reshaped** Little Dorrit Park to improve **cohesion** and maximise the use of space. This was achieved by expanding into Cathedral School Hardstanding and Babington House Gardens to **open up** the park and ensure full control of entrances to **increase safety and security**.



The **'Everybody's Business' Southwark Plan** encourages projects that support **healthy** and **active children**, to help tackle the prevalent issue of overweight young children in the area.

Education through biodiversity and sustainability, whilst maintaining a fun and stimulating playground with responsibly procured materials supports the **UN Sustainability Goals** below. These goals are the foundations of sustainable development in the 21st century.



The playground area has been designed to be sympathetic with our vision statement; **wooden materials** have been selected to maintain a **natural environment**. Southwark Council encourage **heritage-led regeneration**. The original **train, wall and Little Dorrit gate** will be retained and made into **central features** of the park, supporting the ecohaven theme we aim to achieve.

Design detail from the **gate** will also be incorporated into features throughout the park to bring **cohesion** throughout the design.



Park security has also been a key design consideration and we propose to **lock the park overnight** (10pm-6am), unless an evening event is taking place. As well as incorporating **appropriate lighting** to **avoid 'dark corners'**.

Regular events would be encouraged, focusing on the those which are either **educational** (e.g. nature - using the garden) or those tailored towards an **active lifestyle** (e.g. community and school litter picks).

OUR DESIGN

Play Spaces

The central park and wooden adventure trail encourage active play in a safe environment. Seating has been strategically located to ensure that parents and guardians can keep watch of their children.

Garden

'Wild Corner' aimed to encourage wildlife, while providing educational opportunities for the neighbouring schools and residents, such as composting and biodiversity. We envisage an interactive walking route through the garden, with education boards on how to identify the local wildlife and plants. Shade-tolerant species such as roses, sunflowers, buddlejah and daisy will be planted in areas of low light.

Incorporating the original wall and gate as a feature of the garden will create a sense of heritage and shared history amongst park users.



Dog Walking

A designated area for dog walking will be introduced, this area will feature stone paw prints along the ground and will be separated by a low hedgerow to prevent a feeling of segregation and to introduce an important habitat refuge for wildlife.

Communal, Open Space and Amenity

A pop-up café unit caters for users of the park, as well as providing a source of revenue and indirect security. This shall be located in the well-lit north-west area. Tiered seating areas have been designed which include space for planting and artwork produced by the local pupils and residents. Innovative and effective waste, recycling and dog waste bins shall be provided around the park.

We aim for Little Dorrit park to become a central hub of activity, where nature can flourish.

LITTLE DORRIT PARK

EVENT HUB FOR THE SOUTHWARK COMMUNITY



Little Dorrit park has been providing its diverse array of users with outdoor space in the South of London since 1902. Located just off Borough High Street the park is a welcome escape to the community from the quick pace of London.



Our Vision

An adaptable space which provides for all users while creating revenue for the site. **The park will have an adaptable centre piece, theatre in summer and ice rink in winter.** This will be at the heart of the park with surrounding seating, playpark and community library in the less shadowed area of the park. The concrete and hard paving will be reduced and the park opened up with limited fencing- apart from to the secured outdoor education area.

Keeping the current through way across the park, re-paved with recycled materials

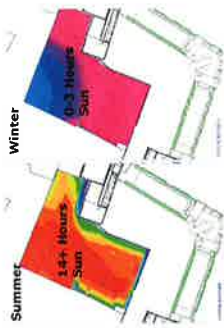


Little Dorrit park will be a literature addition to the BOST park network in the Southwark area with the influence of Charles Dickens.

Design Goals

- Integration –inclusivity for both schools
- Sustainability –biodiversity enhancement, use of recyclable materials
- Education- promote lifelong learning, appreciation of the history of the park
- Safety- open spaces, reduction of anti-social behaviour

Parks Overshadowing Issues:



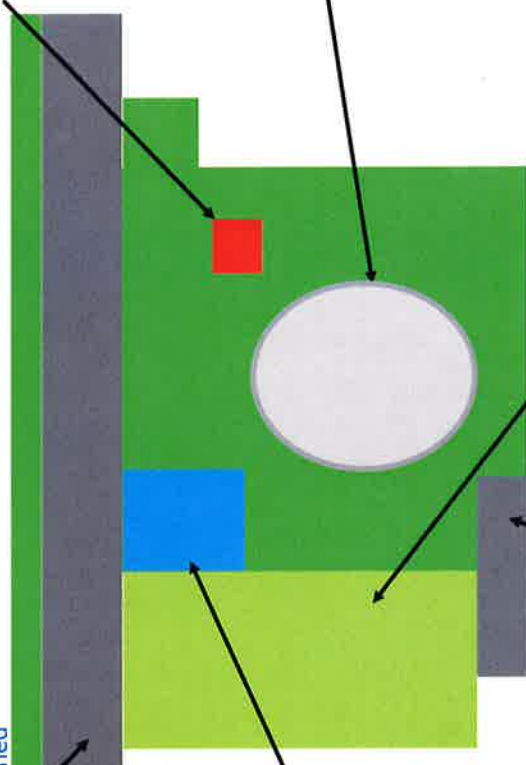
Light tunnels and display will create a feature at night to attract visitors and provide security at all three entrances



Community Library/Book Swap and relaxed seating



Borough High Street



Children's Play area

Marshalsea Road

Summer Theatre for community use, with opportunity for a Dickens Festival



Revenue will be generated for the site through the 4 month winter ice rink

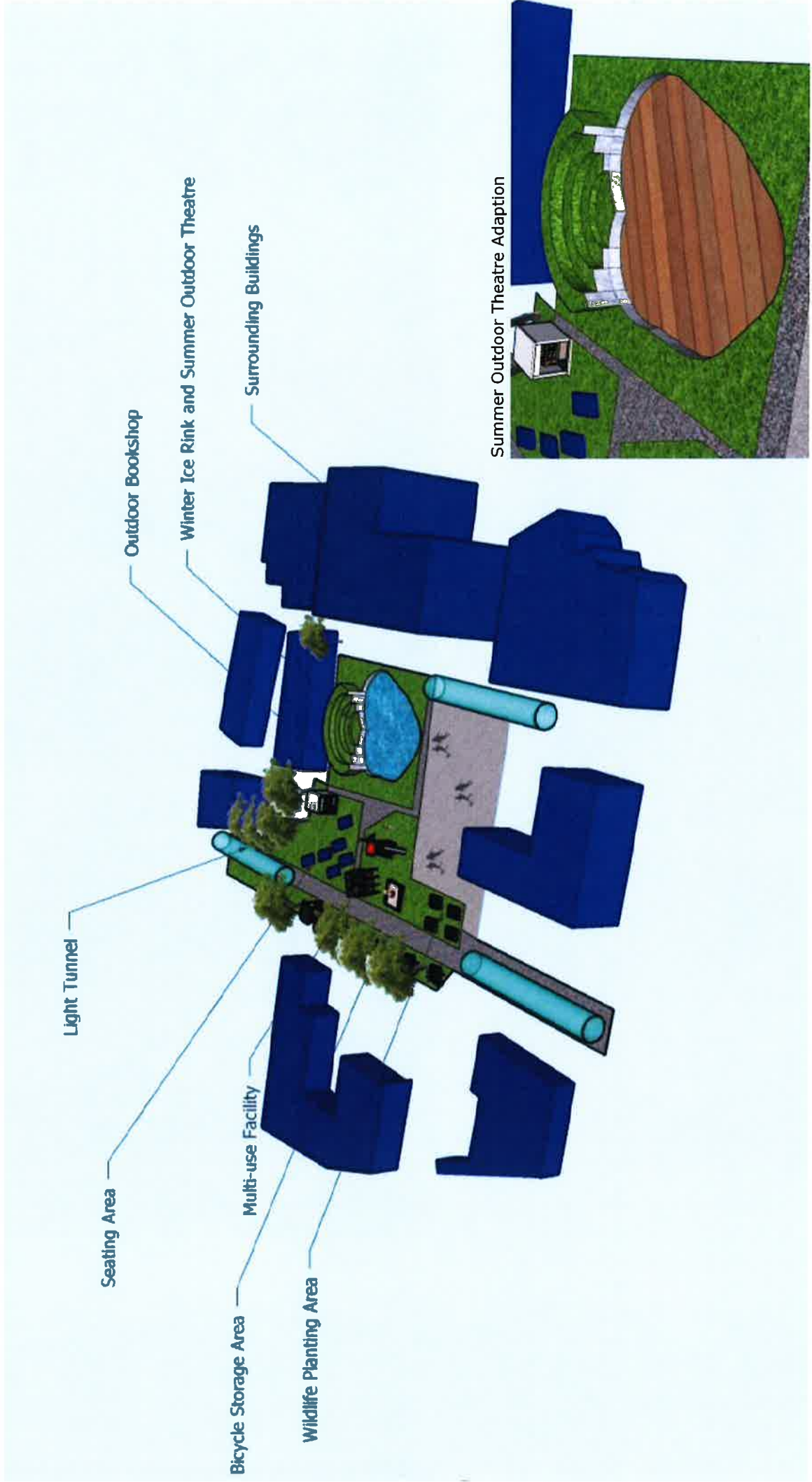


Cathedral school hard course, becomes a secured outdoor educational area for surrounding schools with self-built structures – such as a Wikihouse



LITTLE DORRIT PARK

EVENT HUB FOR THE SOUTHWARK COMMUNITY



LITTLE DORRIT PARK

A VIBRANT, INCLUSIVE, AND EDUCATIONAL PLAY SPACE

GROUP 05: BROGAN MACDONALD, LAURENCE SHOTLIFF, LENE MARIE ROGNAN, MICHAEL TRUBSHAW, REBECCA RABY-SMITH

RAMBOLL

The proposed redevelopment of Little Dorrit Park creates an inclusive, educational and welcoming social environment for all by providing:

- ✓ Inclusive and accessible playground supporting children on the autism spectrum
- ✓ Sensory garden - promoting multi-sensory experiences for all ages and abilities
- ✓ Charles Dickens Treasure Hunt allowing children to explore, play and read about the rich heritage of the site
- ✓ Swimming pool for public and school use
- ✓ Greater permeability through the area with access to both schools and Marlborough Sports Garden

PHASED REDEVELOPMENT



Phase 1 – Existing Park & Northern Access



Phase 2 – Long-Term Sustainable Masterplan

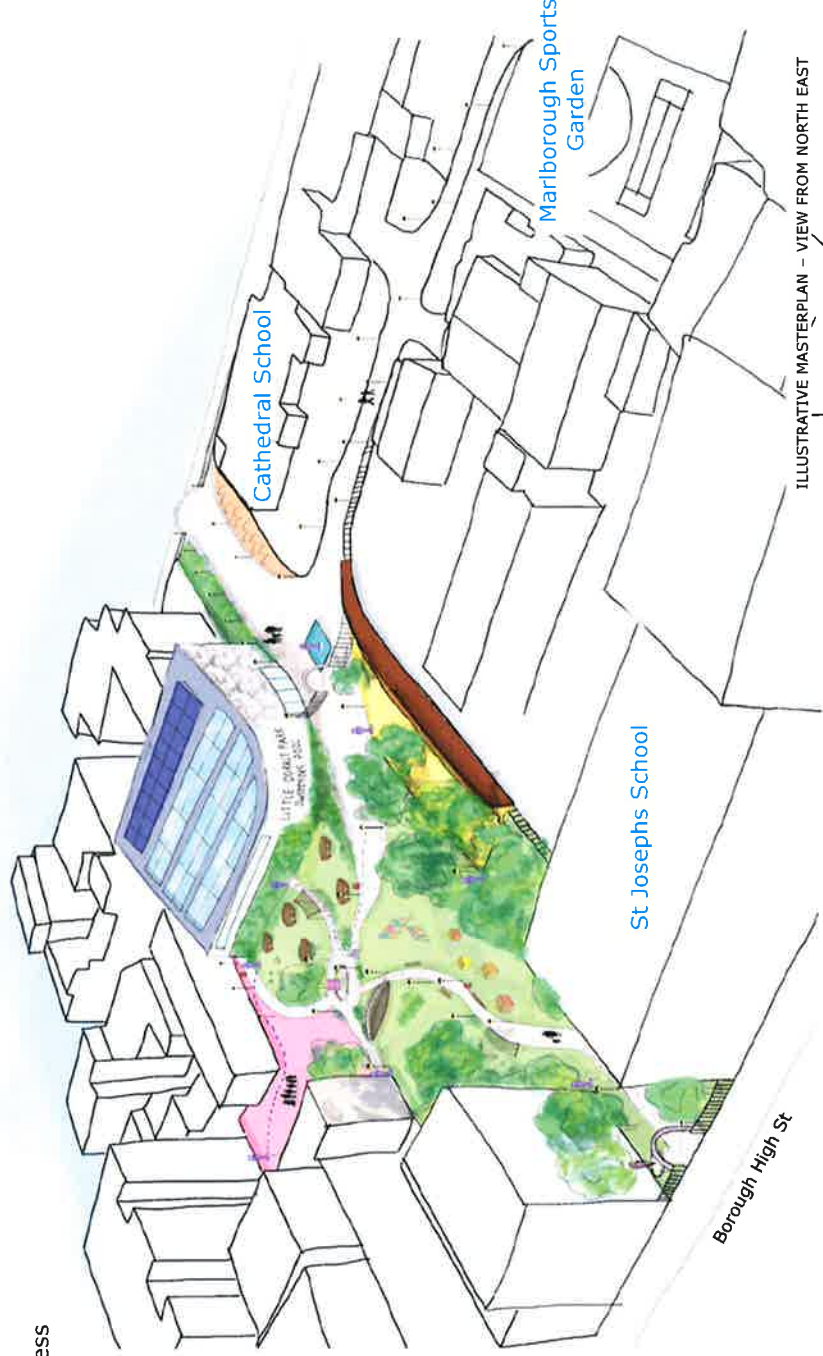
KEY DESIGN THEMES

DICKENS TREASURE HUNT

INCLUSIVE PLAY

CONNECTIVITY TO SCHOOLS

SWIMMING POOL



ILLUSTRATIVE MASTERPLAN - VIEW FROM NORTH EAST

LITTLE DORRIT PARK REDEVELOPMENT



Follow Amy Dorrits needle & thread around the park to discover Dickens characters

Swimming Pool

Sensory Garden

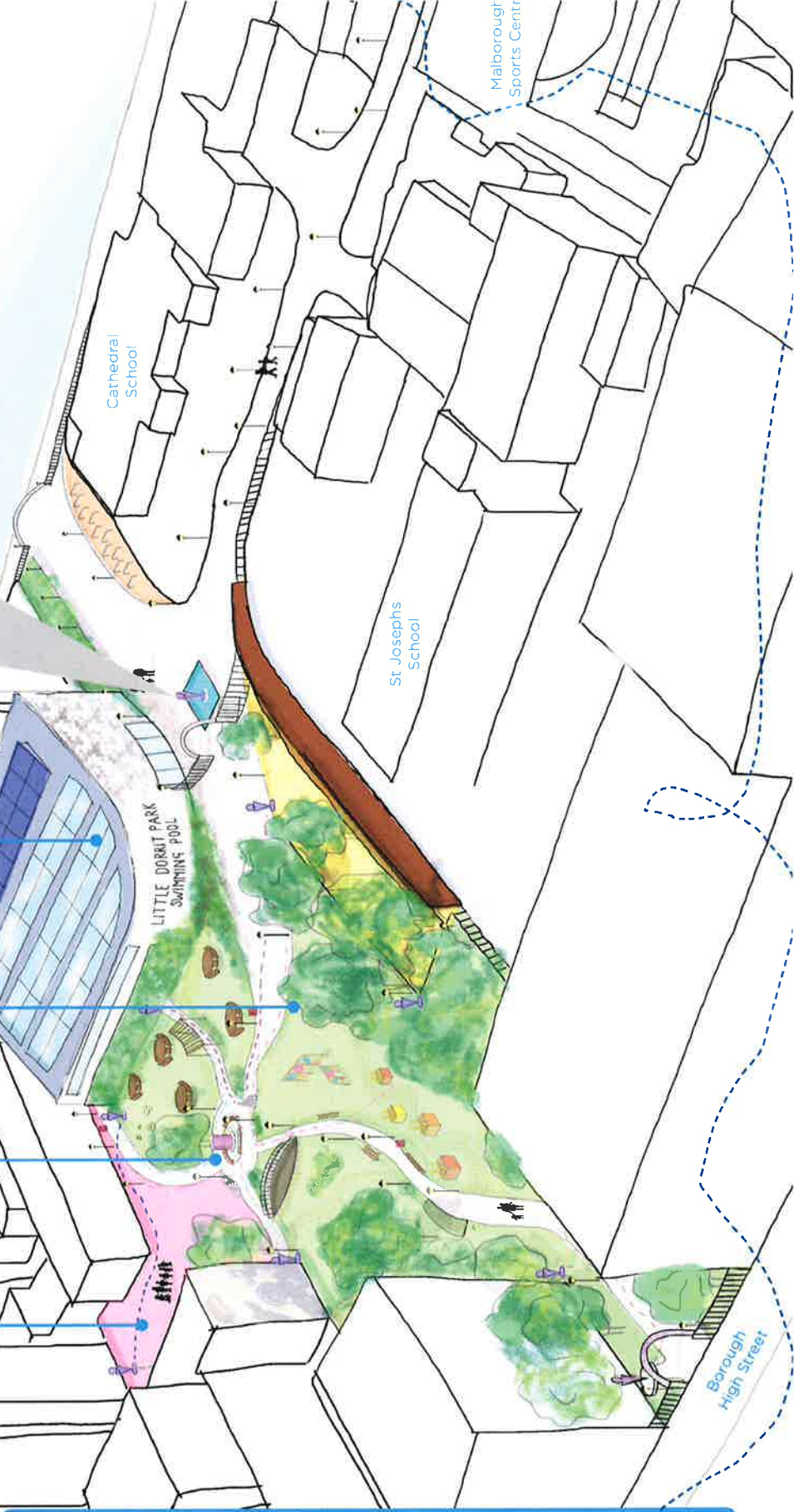
Educational Treasure Hunt

Inclusive Playground

Increased Accessibility

Phase 1

Phase 2



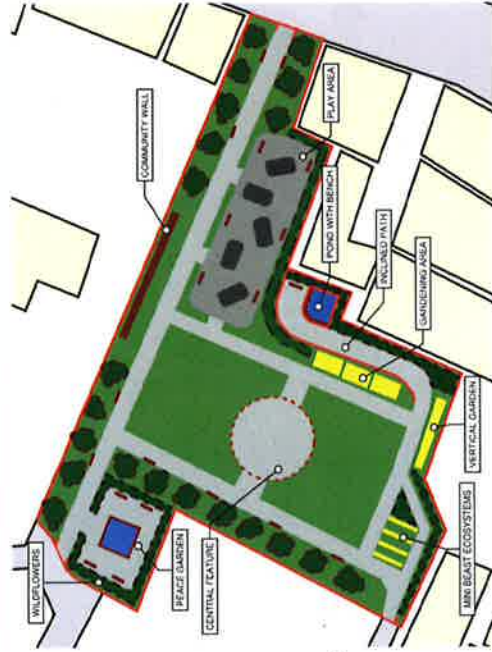
LITTLE DORRIT PARK REGENERATION

AN INCLUSIVE AND SUSTAINABLE PUBLIC SPACE FOR THE LOCAL COMMUNITY

GROUP 06: REGGIE CLARK, PATRICK EDWARDS, LIAM KELLY, QIXIAN ZHANG

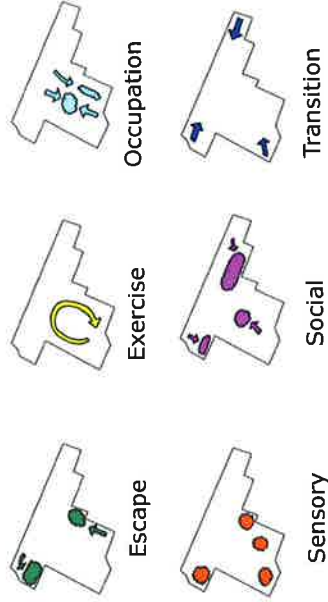


The Masterplan



Inclusive Design

The park is designed based on these six themes to be accessible to all, particularly those with the greatest need for a public space. For people with Autism, the park can provide a free, safe space that carers will find invaluable.



Key Stakeholders

Evening Users
Dog walkers
Exercise groups
Local residents



Casual Visitors
Tourists
Local residents
Passers through

Personal Spaces

A balance between large open spaces and small, personal spaces is key for a multi-use and diverse public space.



Elevated path Wildflowers Pond

Recreational Space

Conservation of the recreational space is vital, and it can be improved through relocation and introduction of sustainable aspects.



Recycled tyres flooring Play area Water pumps

Biodiversity and Sustainability

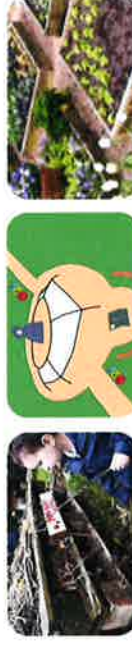
The park presents a great opportunity for introducing biodiversity to Borough and sustainability can be celebrated in the park.



Vertical Garden Transparent beehive Recycling

Education and Heritage

Interaction between the schools and the park is encouraged through incentives, for the benefit of the local school pupils.



Mini-beast hotel Amy Dorrit statue Vegetable patch

Community Interaction

Community interaction provides incentive and purpose to the park as well as providing real social value to the local community.



Interactive community wall Central dome Goody Gym Volunteering

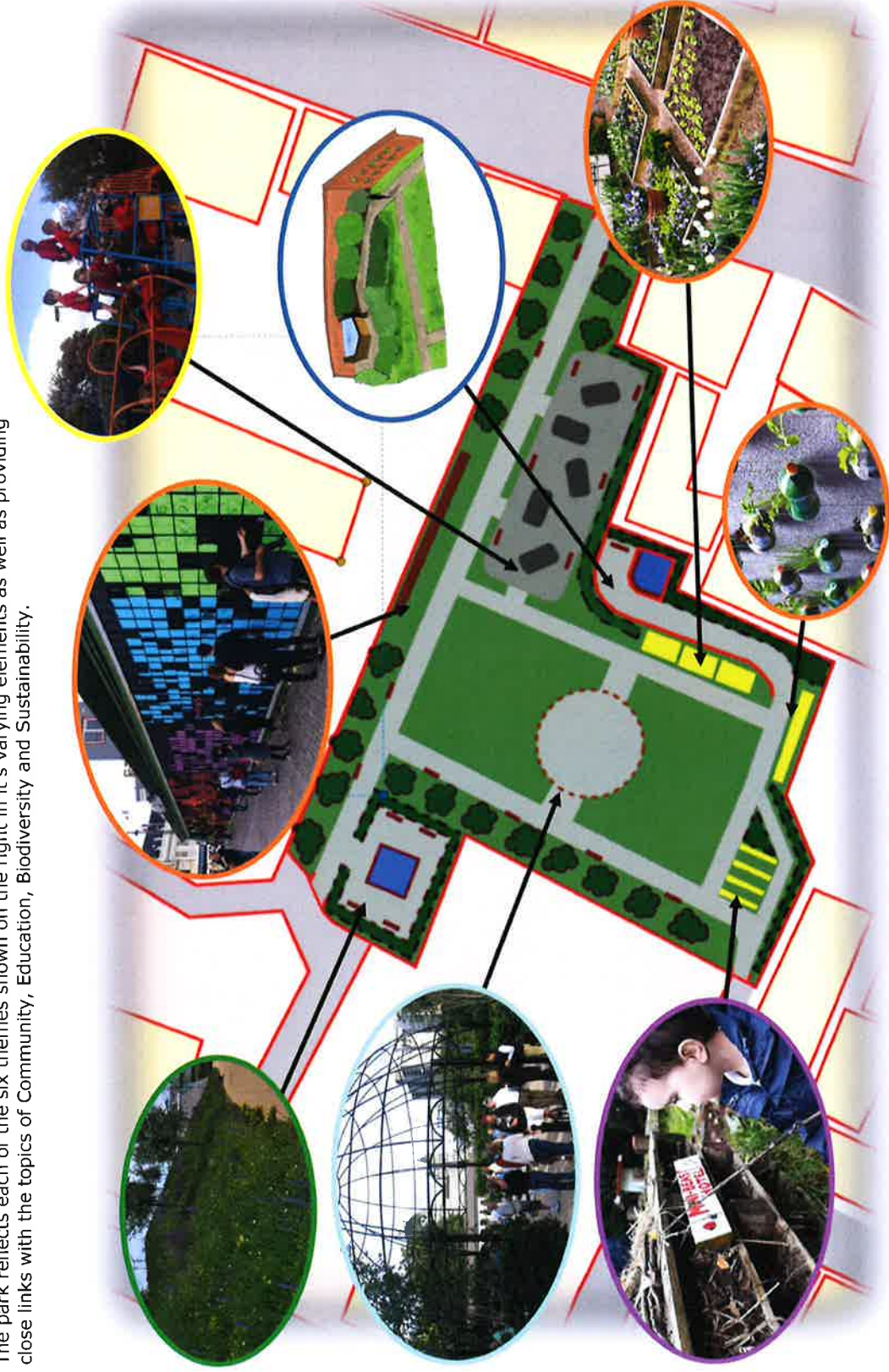
UK GRADUATE DESIGN PROJECT 2019

LITTLE DORRIT PARK REGENERATION

AN INCLUSIVE AND SUSTAINABLE PUBLIC SPACE FOR THE LOCAL COMMUNITY

GROUP 06: REGGIE CLARK, PATRICK EDWARDS, LIAM KELLY, QIXIAN ZHANG

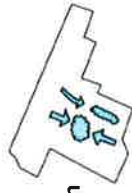
The park reflects each of the six themes shown on the right in it's varying elements as well as providing close links with the topics of Community, Education, Biodiversity and Sustainability.



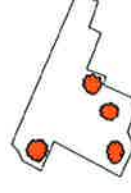
Escape



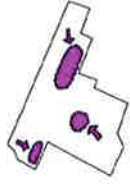
Exercise



Occupation



Social



Sensory



Transition

LITTLE DORRIT PARK

AN URBAN GREENSPACE FIT FOR PURPOSE

GROUP 07: AHMAD TALEB, BECKY RAE, GIANLUCA PILATI, SAM MARSH, TIM PUCKERIDGE

RAMBOLL

Foundations for Design

Children's Facilities and Safety

- A children's play park will remain a key feature of Little Dorrit, constructed around the original park wall, in the SW section of the park.
- The grounds will be primarily greenspace and the play equipment will be built from natural or recycled materials where possible.
- For safety, a gated fence will surround the play area and a family picnic area will be located outside.

The Wider Community

- The existing dog park will be transformed into an exercise and multi-purpose community area, complete with outdoor exercise equipment and a performance space.
- The exercise area will be available to use outside of the normal dusk till dawn opening hours and contain sensor or digitally controlled (i.e. through an App) lighting, so that the facilities are available to early risers, shift workers and those who prefer to use the facilities outside of peak times.
- The park will include a planted garden area that would be maintained by the local community, including the surrounding schools.

The Lunch Space

- Our design incorporates a large seating space, separate from the children's facilities, for those who live and work in the surrounding area to eat their lunch, take a break or socialise.
- Lighting and a wooden canopy, covered by greenery, ensures that the lunch area can be used in diverse array of weather conditions.

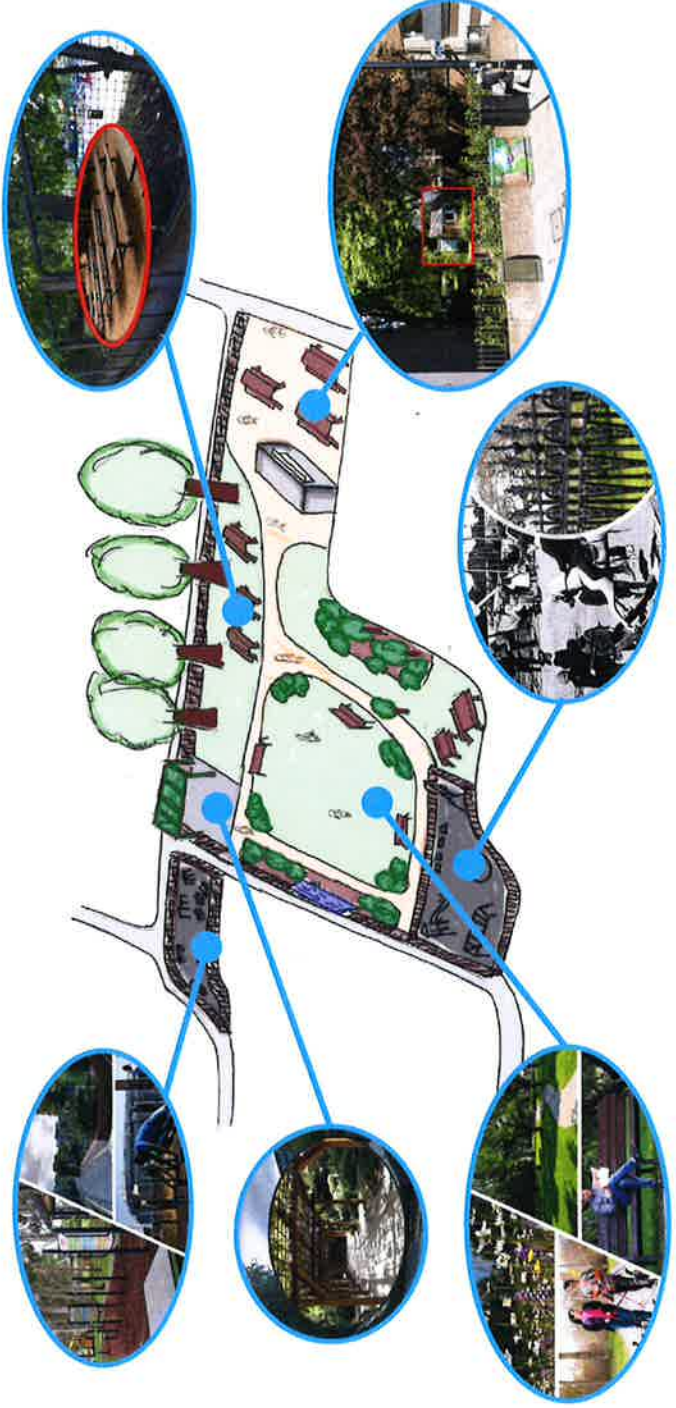
Our aim is to enable the maximum use of the space available to us, whilst maintaining a strong focus on value for money in terms of new directives and demographics for the park, whilst keeping in mind the parks purpose and heritage

Retail and Revenue

- The community atmosphere in Little Dorrit will be tied together with the addition of a small café, located between Broughton High St and the main park, increasing visibility for passers-by, as well increasing functionality as those using the Little Dorrit.
- The Café will provide revenue for the park through rent, operating a rotating monthly rota, as well as renting lighting solutions for the exercise and dining spaces

Maximising Greenspace

- Our vision is to transform Little Dorrit Park into a versatile Urban Greenspace, providing an escape from the bustle of the surrounding London streets.
- A centred design around a large, open greenspace, which could be used for activities, classes, events, markets or simply a space to relax, designed to be dog friendly, an open to all users
- The periphery of the park will be lined with a planting bed, which will contain wildflowers, wildlife 'homes', feeders and information boards about them.



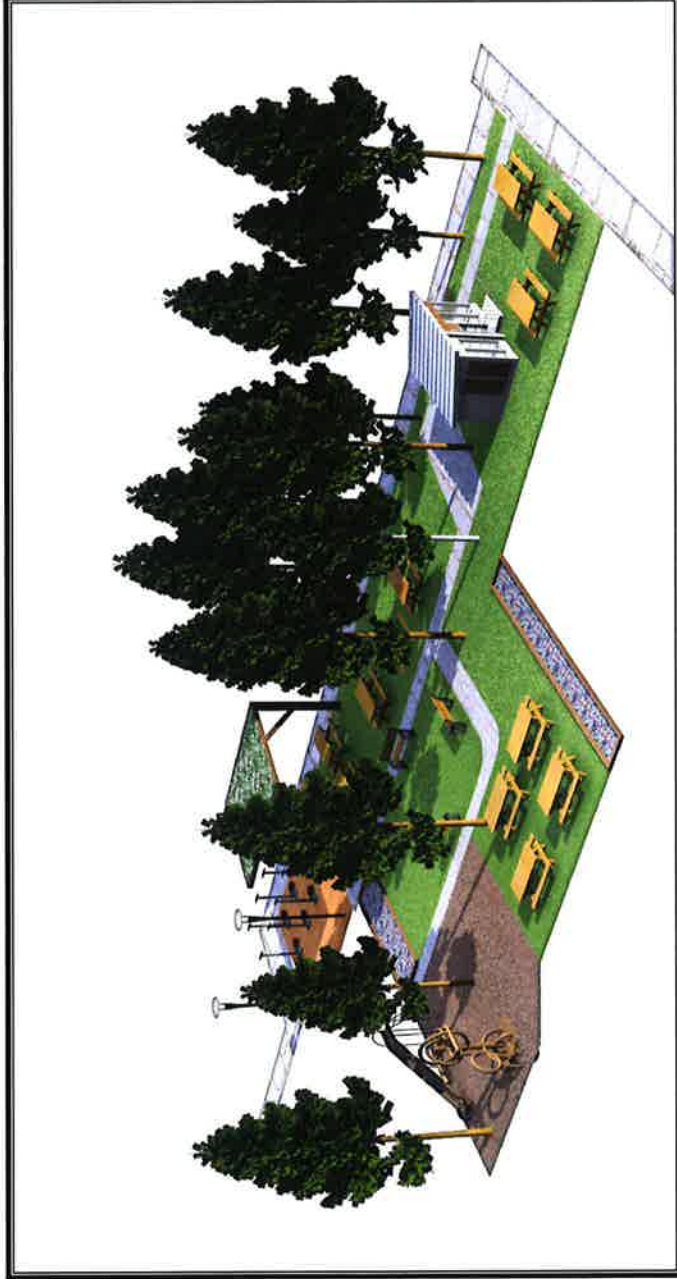
UK GRADUATE DESIGN PROJECT 2019

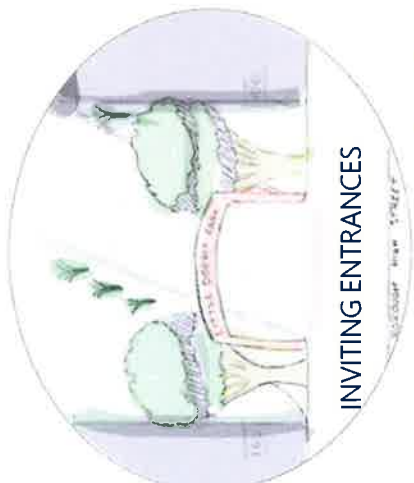
LITTLE DORRIT PARK

AN URBAN GREENSPACE FIT FOR PURPOSE

GROUP 07: AHMAD TALEB, BECKY RAE, GIANLUCA PILATI, SAM MARSH, TIM PUCKERIDGE

RAMBOLL





COMMUNITY ENGAGEMENT | EDUCATIONAL ATTAINMENT
 REVENUIF OPPORTINITTES