

7 Day Average Comparison								
Ref	Road	Average number of vehicles per day before closure (7 day)	Average number of vehicles per day after closure 2016 (7 day)	Difference in vehicle numbers before and after closure (2016)	% change (2015-2016)	Average number of vehicles per day after closure 2017 (7 day)	Difference in vehicle numbers before and after closure (2017)	% change (2015-2017)
NA04	Lyndhurst Grove	2887	4507	1620	56.13%	4412	1525	52.84%
RA02	Camberwell Grove	4427	2890	-1537	-34.72%	3131	-1296	-29.27%
RA05	McNeil Road	4072	2246	-1826	-44.84%	2131	-1941	-47.67%
RA06	Grove Park	1727	2714	987	57.15%	2325	598	34.63%
RA07	Grove Hill Road	8644	6227	-2417	-27.96%	6003	-2641	-30.55%
RA10	Lyndhurst Way (N)	6792	8049	1257	18.51%	8966	2174	32.01%
RA11	Chadwick Road	1392	2662	1270	91.24%	2379	987	70.91%
RA12	Avondale Road	4055	4533	478	11.79%	4269	214	5.28%
RA13	Grove Vale	17557	19684	2127	12.11%	19306	1749	9.96%
RA14	Lyndhurst Way (S)*	6055	8459	2404	39.70%	8331	2276	37.59%
RA15	Bellenden Road (N)**	6504	8301	1797	27.63%	8652	2148	33.03%
RA16	Bellenden Road (S)	10714	11608	894	8.35%	11377	663	6.19%
RA17	Adys Road (N)	4567	4899	332	7.26%	3920	-647	-14.17%
RA18	Adys Road (S)	N/A	5304	No Data Available	N/A	5032	No Data Available	N/A
RA20	Rye Lane	4974	6298	1324	26.62%	7423	2449	49.24%
	Overall Total	84366	98381	14015	16.61%	97657	13291	15.75%

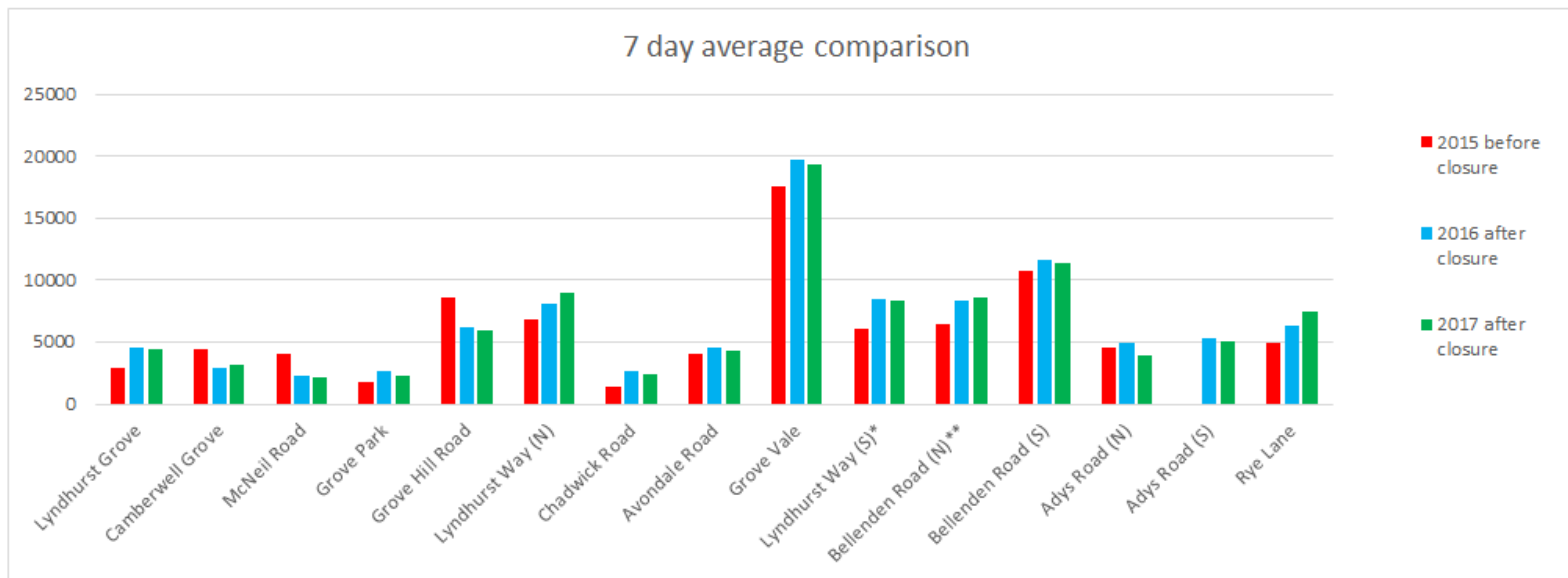


Figure 4. Summary table and graph of 7 day traffic flow data before and after closure