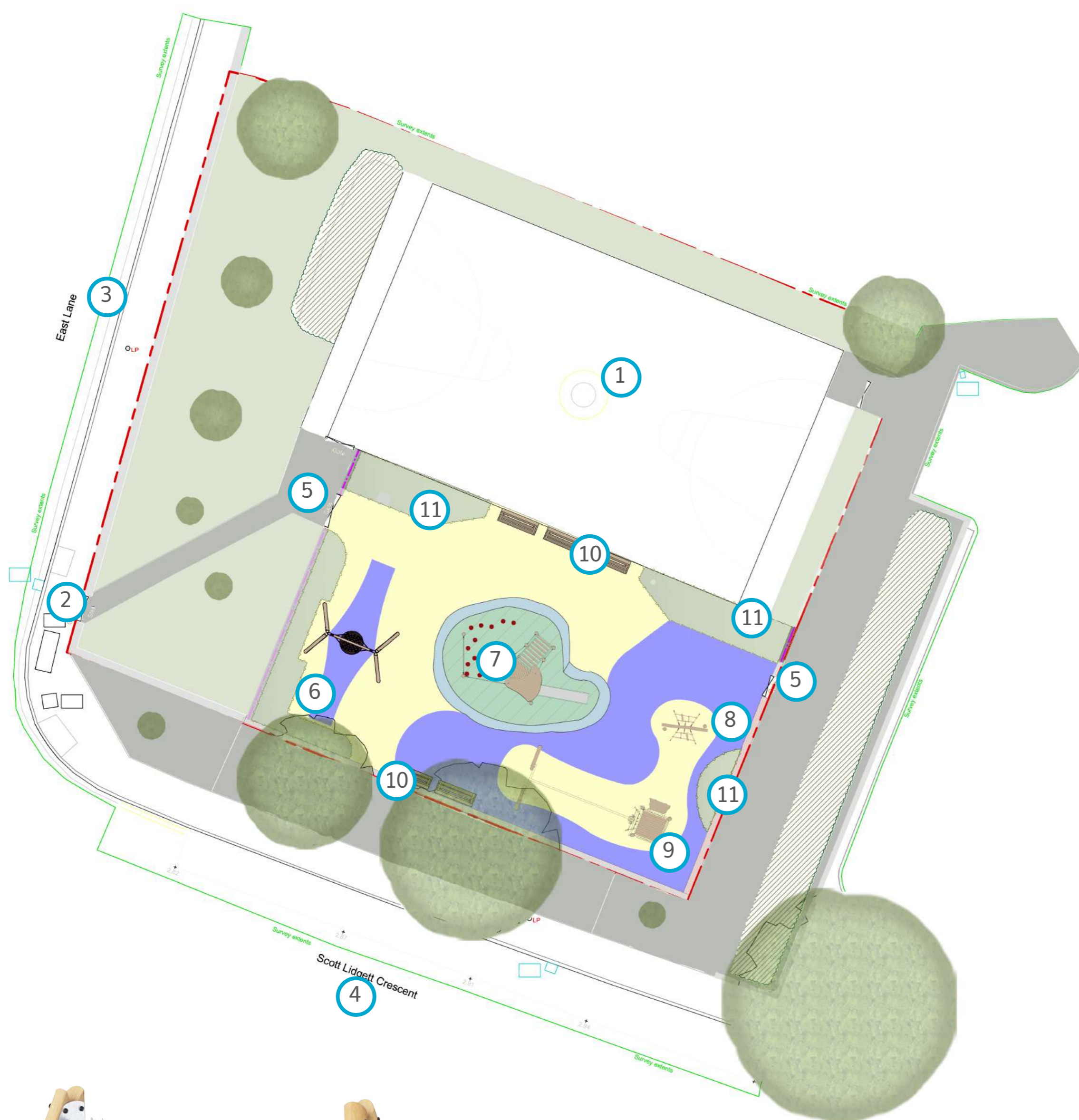


SCOTT LIDGETT - BERMONDSEY

Playground Layout Plan - Timber Tree House

The Timber Tree House design incorporates curved edges and smooth lines with fluid play equipment proposed which mainly consists of timber materials, offering a range of play activities for ages up to 12. A large central Play hut on top of a mound encourages a mix of dynamic play, with other play specific equipment giving opportunities for sliding, swinging and climbing. The scheme also include new seating areas for parents/ guardians to sit, with new planting areas to enjoy.



Key

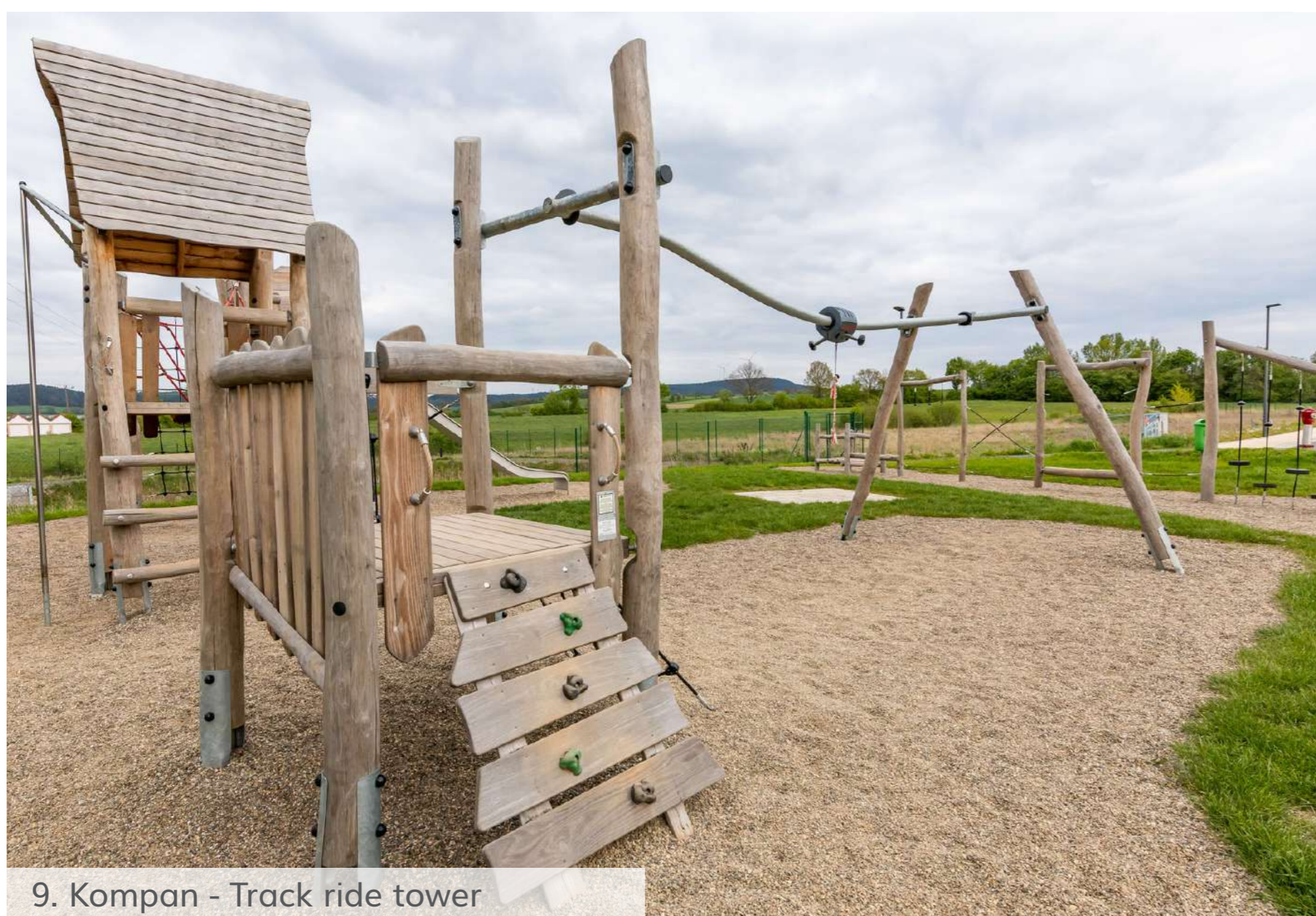
- 1. Existing Ballcourt retained
 - 2. Existing Gate Entrance made accessible
 - 3. East Lane
 - 4. Scott Lidgett Crescent
 - 5. Existing Playground Entrance
 - 6. Kompan Swing with Nest Swing
 - 7. Kompan Play Hut with Stairway
 - 8. Kompan Up and Over Net
 - 9. Kompan Track Ride Tower
 - 10. New Seating Area
 - 11. New Planting Areas
- Existing Trees
 - New Railings & Gates
 - Amenity Grass



6. Kompan - Swing with Nest seat



7. Kompan - Play hut with stairway



9. Kompan - Track ride tower

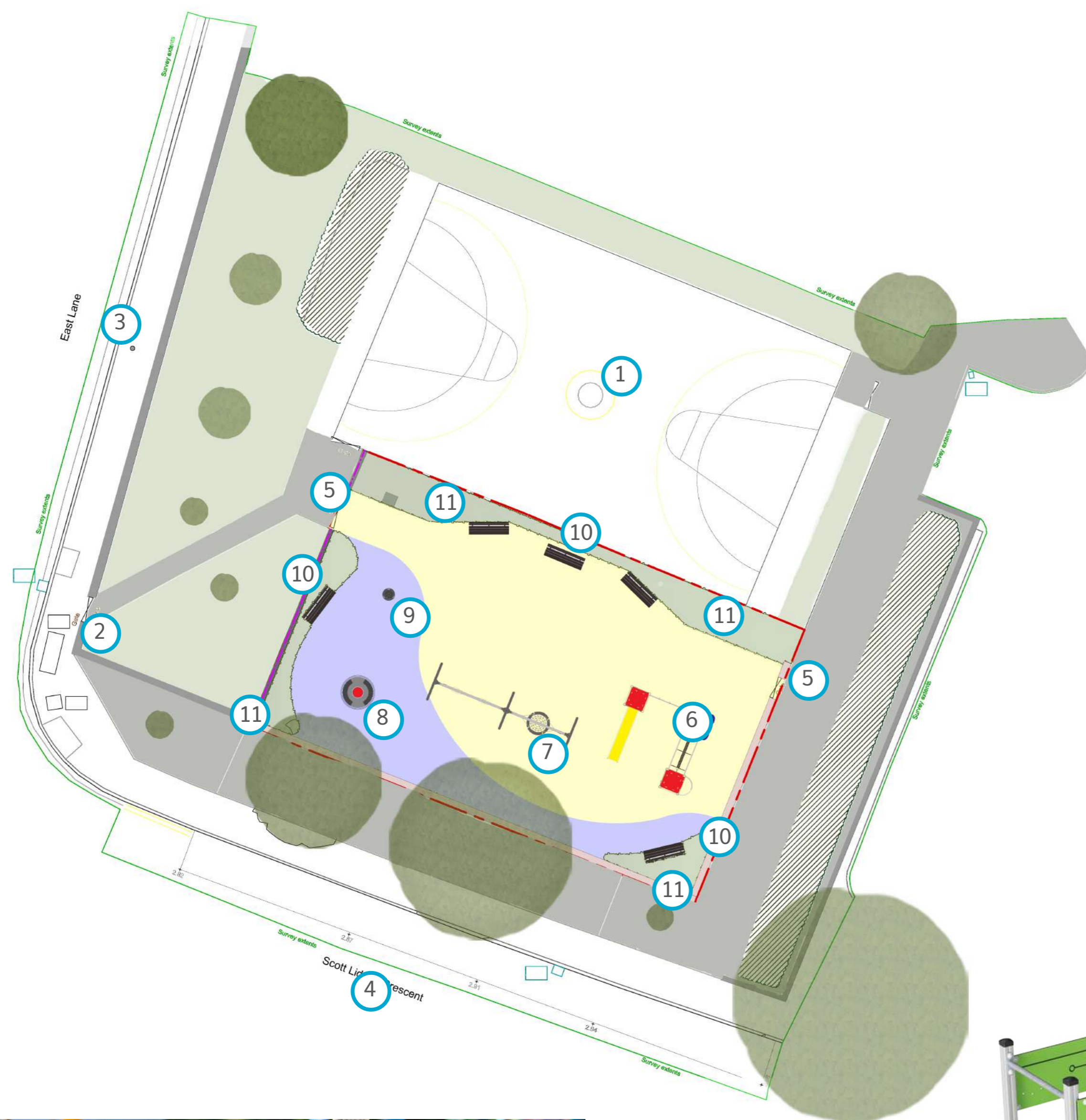


8. Kompan - Up and over net

SCOTT LIDGETT - BERMONDSEY




Playground Layout Plan - Metal Platform

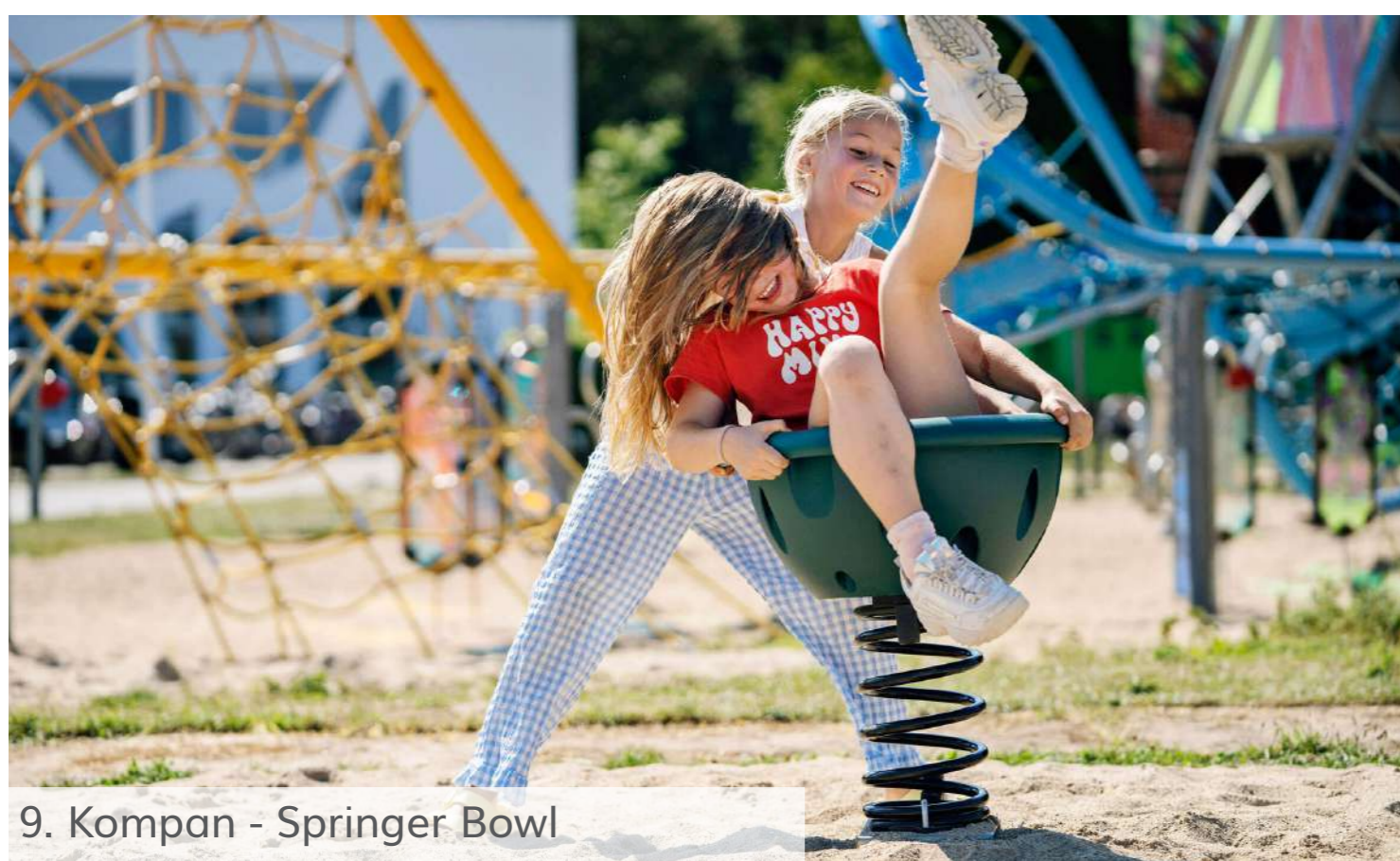
'The Metal Platform' design includes curved rubber crumb surfacing and the traditional play equipment such as swings, slides and carousels, which mainly consists of stainless steel and recycled EcoCore. The large 'Triple Tower' play equipment offers various levels of difficulty in access climbing and balance with the Steel Swing allowing for ages up to 12. New planting areas are proposed with new seating areas to allow Parents / Guardians a place to sit, rest and relax.



Key

1. Existing Ballcourt retained
2. Existing Gate Entrance made accessible
3. East Lane
4. Scott Lidgett Crescent
5. Existing Playground Entrance
6. Kompan Triple Tower
7. Kompan Steel Swing
8. Kompan Accessible Roundabout
9. Kompan Springer Bowl
10. New Seating Area
11. New Planting Areas

-  Existing Trees
-  New Railings & Gates
-  Amenity Grass



9. Kompan - Springer Bowl



6. Kompan - Triple Tower



7. Kompan - Steel Swing



8. Kompan - Accessible roundabout

WICKFIELD - BERMONDSEY

Playground Layout Plan - Wickfield Play Area and Ball Court

Proposals at the Wickfield play area and ball court are to retain and refurbish where possible. All equipment within the play space to be retained and refurbished as necessary. New safety surfacing will be provided. A new rubber crumb surface will emphasize the entrance in the play space, and new seating will be provided.

The Ball Court will be cleaned and refurbished with new line markings. Seating will also be provided alongside the pitch markings.

Key

1. Existing Ballcourt retained, cleaned with new pitch markings
2. Scott Lidgett Crescent
3. Existing Public Pathway
4. Existing Playground Entrance, railings refurbished
5. Existing Play Equipment retained and refurbished
6. New Seating Area
7. New Rubber crumb surfacing
8. New Grass Rubber matting
9. New Planting Areas
10. New Play Markings
11. Existing Goals retained



7. Rubber Matting



7. Rubber Crumb Surfacing



7. New seating areas