

BRAMCOTE PARK

Project Research

BRAMCOTE PARK

Bramcote Grove
South Bermondsey
SE16 3BW



TEAM

Assemble
Architects

Local Works Studio
Landscape architects

Assemble Play
Play specialists

Webb Yates
Civil Engineers

KEY STAKEHOLDERS

Southwark Borough Council
Client

Nottinghill Genesis
Leasholders (South side)

Optivo
Leasholders (North side)



ORIGINAL PROJECT BRIEF

From commissioning team:

Resident-led master plan with inclusive approach to built environment

Representative of local communities & cultural heritage of the area

Enhanced connection between two sides of park with safer crossing at Verney Road

Inclusive space for all ages and abilities, safe, adaptable and flexible in use

Exciting play spaces that encourage creativity

Retains & enhances biodiversity

A sustainable design that reduces reliance & use of new materials and natural resources

Designs out crime related issues, ensuring all feel welcome



SITE CONTEXT

NORTH SIDE OF THE PARK

- Established community, experiencing change
- Housing adjacent to park
- History of ASB
- Play equipment out of use



SITE CONTEXT

SOUTH SIDE OF THE PARK

- Good mature trees
- Adjacent to housing
- Low usage
- Few seating options



SITE CONTEXT



Low biodiversity



Play offer is poor



Park split by road



Few reasons to stay & be sociable

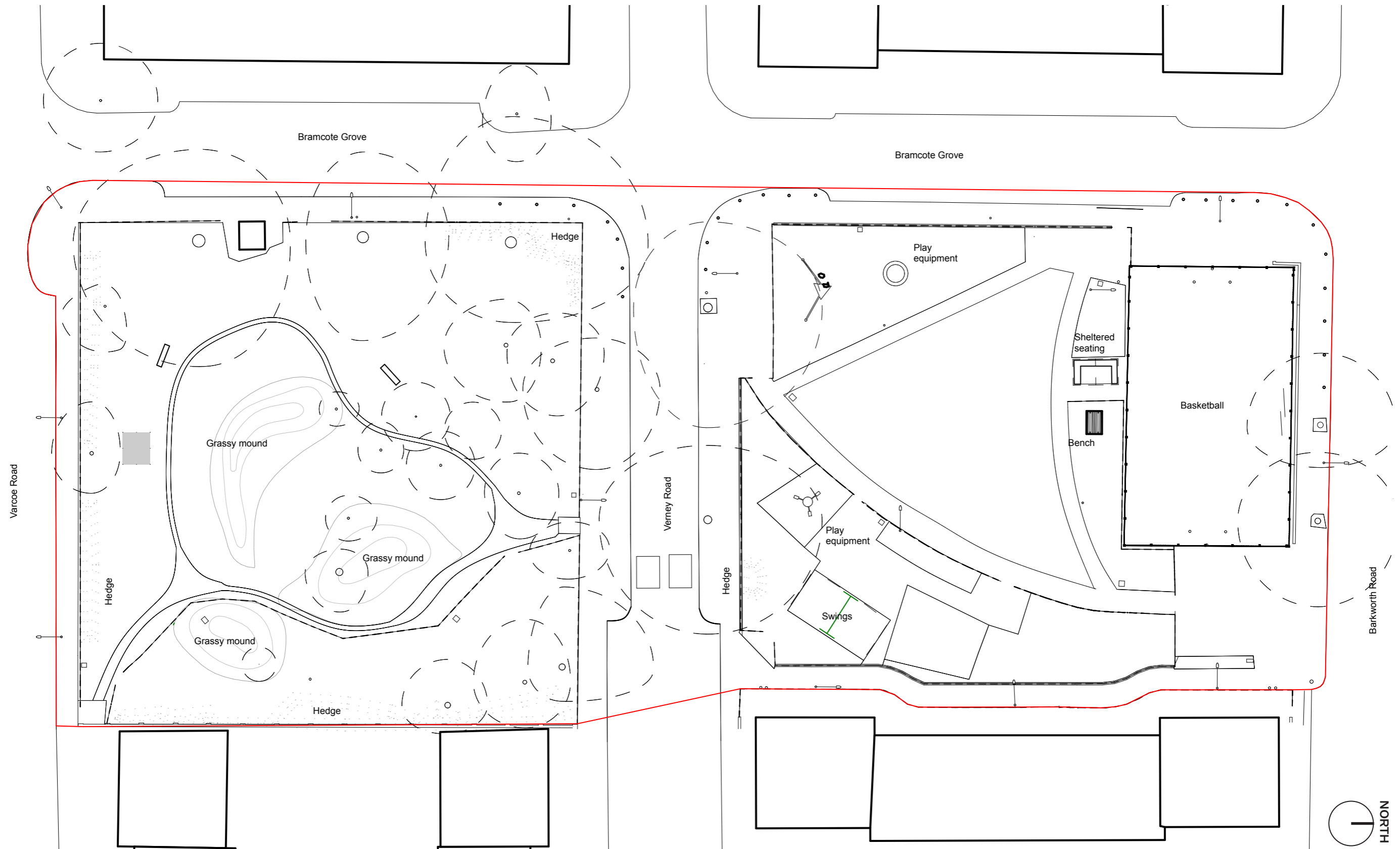


Fencing inhibits access

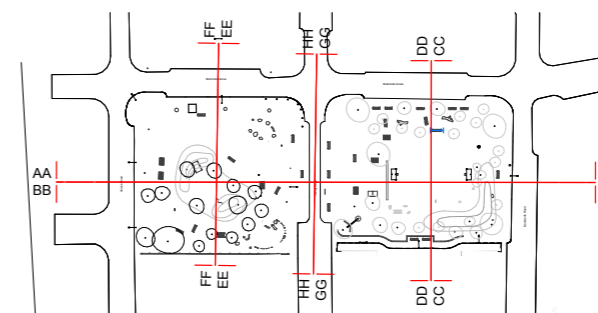


Dog foul prevents park use

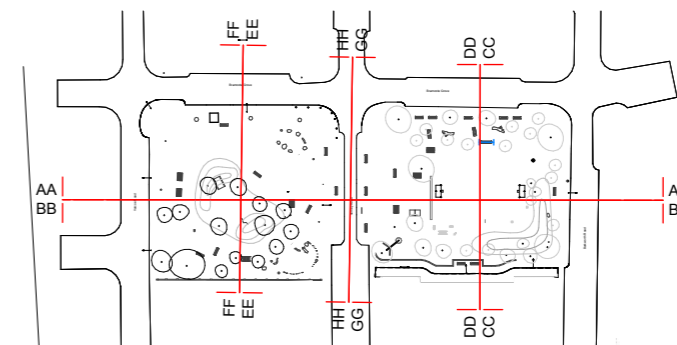
EXISTING SITE PLANS



EXISTING SITE SECTIONS



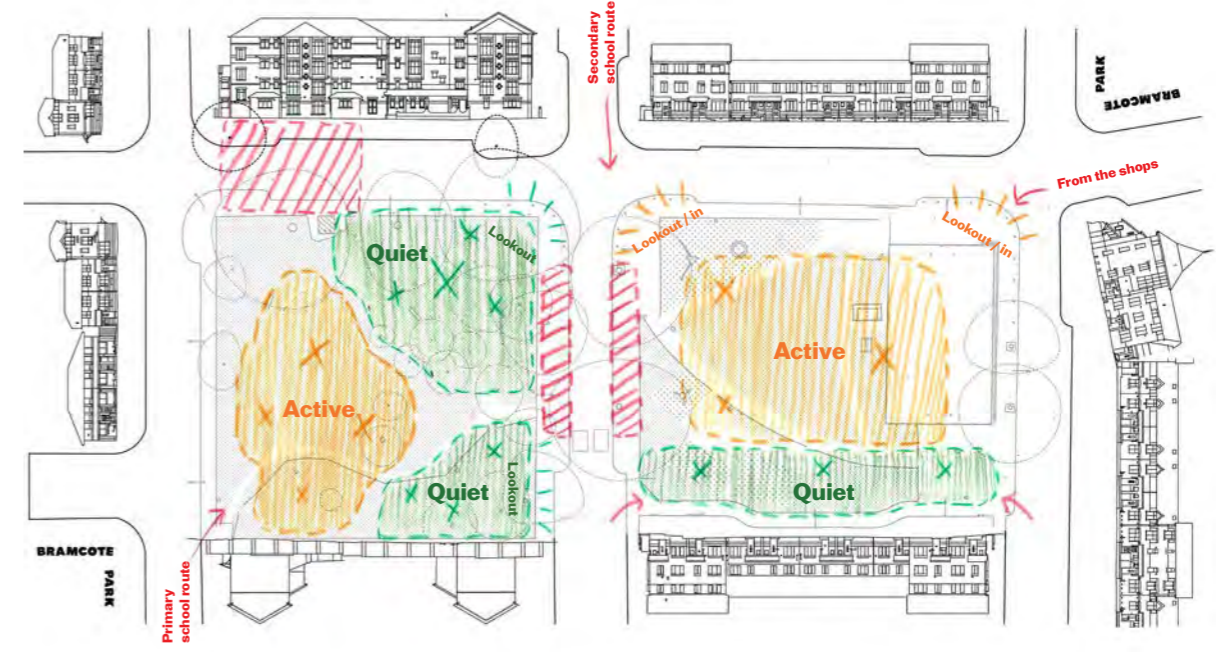
EXISTING SITE SECTIONS



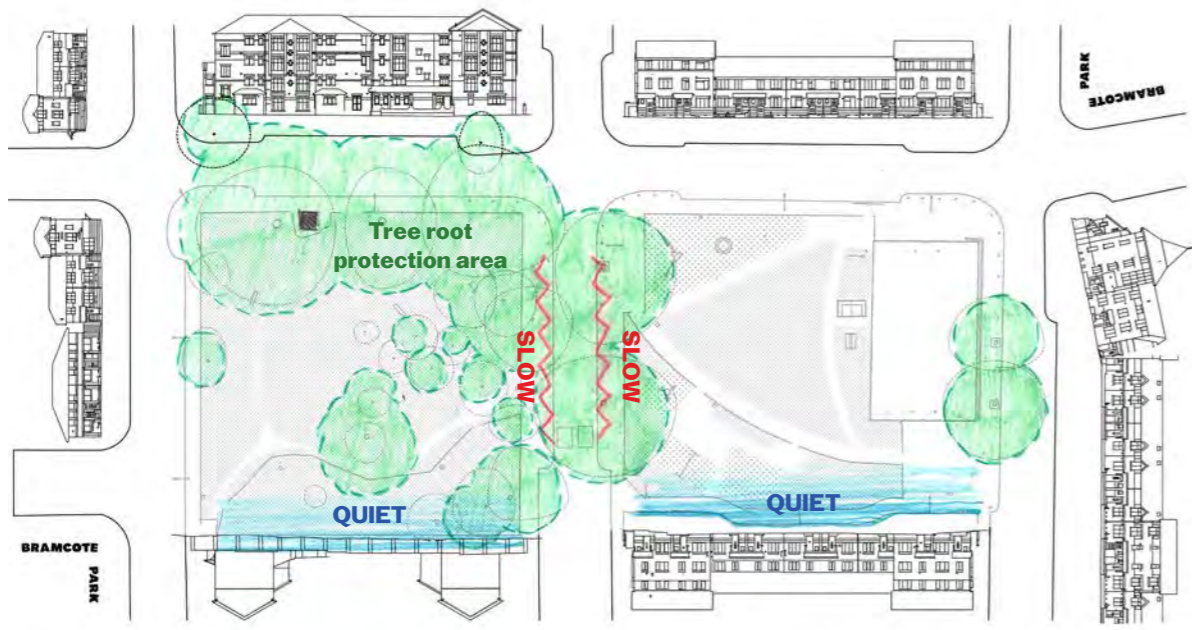
SITE ANALYSIS



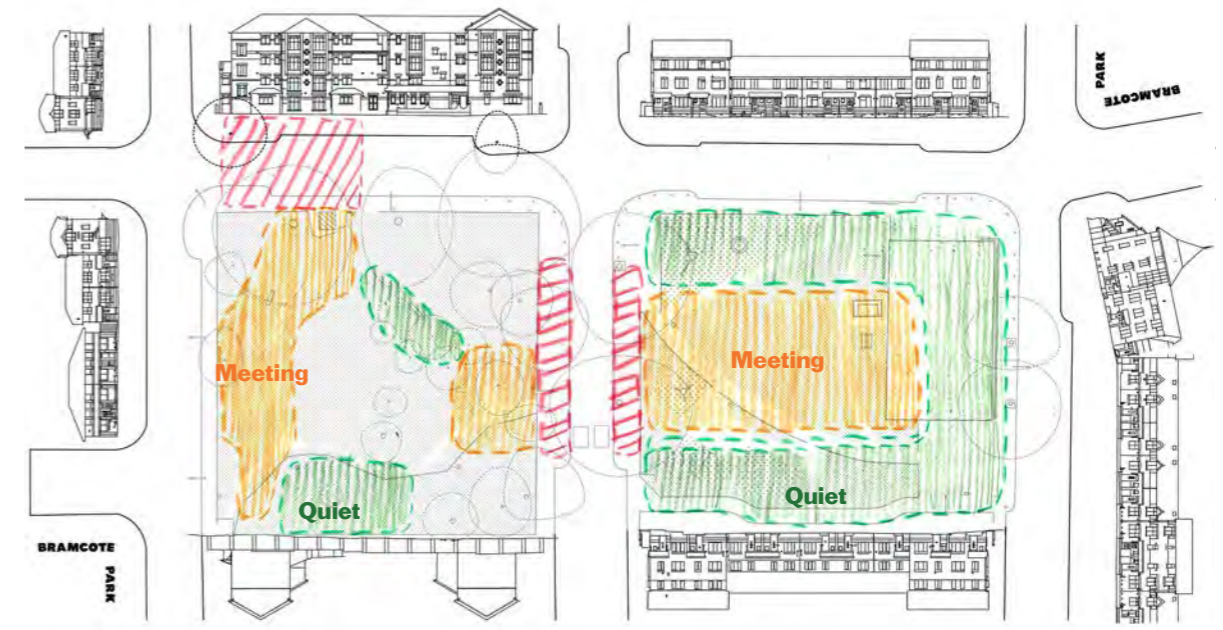
Site Analysis Plan



Site Opportunities - Play and Activity



Site Constraints Plan



Site Opportunities - Social space



COMMUNITY ENGAGEMENT EVENTS



COMMUNITY DESIGN FORUM 1
Bramcote & Bonamy TRA Hall



COMMUNITY DESIGN FORUM 2
Bramcote & Bonamy TRA Hall



NEIGHBOURHOOD MEET UP & PLAY DAY
Bramcote Park



YOUTH DESIGN FORUM
The Blue Youth & Community Centre

COMMUNITY BRIEF (WHAT LOCAL PEOPLE SAY THEY WANT)

NEIGHBOURHOOD FRONT GARDEN:

Spaces for meeting and gathering - seating areas, outdoor tables, a BBQ area for shared outdoor cooking

Remove fences and barriers, and open up entrances & exits to make park more welcoming

Build partnerships and share resources with local community organisations eg. gardening groups, schools, sports clubs.

Spaces for small events that bring different communities and generations together

Spaces for quiet discovery, with opportunities for exploration, like a shared garden

Accessible seating for 1-2 people in quiet spots with planting

Unify north and south of park by integrating Verney Road into park with planting and special surfacing

Make road safer to cross by reducing parking on Verney Road to create clearer sight lines

Slow down traffic, and children, before they reach the crossing e.g. raised table, change of surfacing, planting & special signage



COMMUNITY BRIEF (WHAT LOCAL YOUNG PEOPLE SAY THEY WANT)

PLAYING & BEING ACTIVE:

More and larger swings, slides and climbing frames, to play on together

Space made for girls, to sit, chat and relax together

Places to hang out amongst greenery and nature, with flowers and trees for shade

Planted areas to hide in and explore

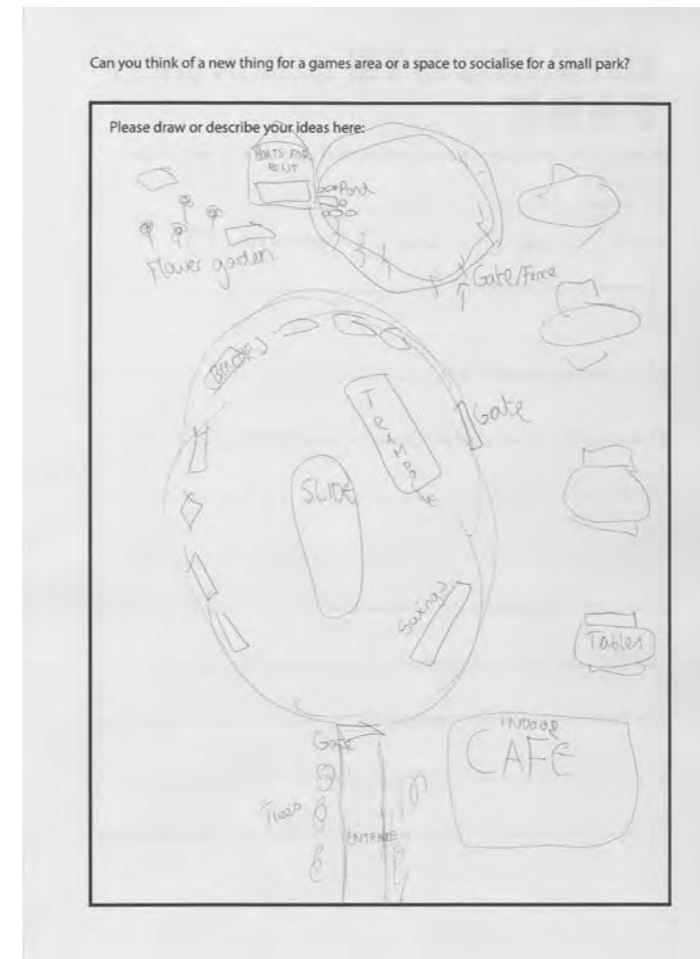
A water feature

Options for new games and activities in the park

An outdoor gym

A place to roller skate and do wheeled sports

Good lighting so they can be active after school in the winter



COMMUNITY BRIEF (WHAT LOCAL PEOPLE SAY THEY WANT)

LANDSCAPE, NATURE AND GROWING:

Planting for wildlife whilst keeping clear lines of sight and a feeling of safety

Edible planting for ingredients for food cooked and eaten in the park (as well as the facilities for preparing and sharing food – a big table, BBQ, seating)

Opportunities to learn and participate in planting

Easy to look after areas for community growing e.g. orchard

Characterful edible plants from around the world to represent different cultures and bridge new and older communities

Scented flowers and foliage around the park, throughout the year, for older people with reduced sight

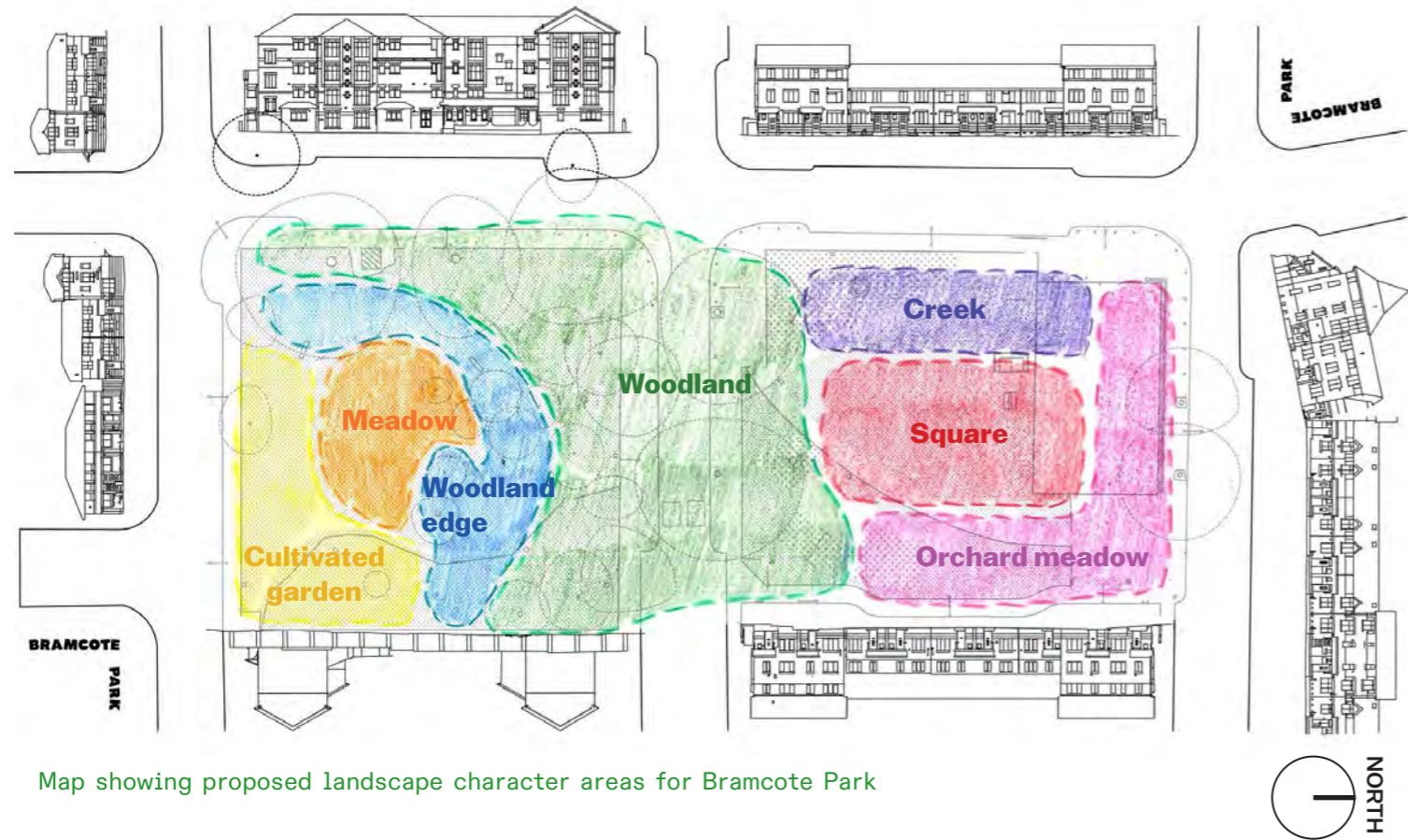
Colourful, seasonal planting, including flowers for people in the park and to improve views from houses and street

Robust planting, and plan for replacement of damaged or unsuccessful plants, asb, animals and lack of maintenance

A place to store things eg. tools, watering cans and access to water, to enable care of community planting



OUR APPROACH - PLAYABLE LANDSCAPE CHARACTER AREAS



Map showing proposed landscape character areas for Bramcote Park



Square



Creek



Woodland



Woodland Edge



Orchard meadow 1



Orchard Meadow 2



Cultivated garden



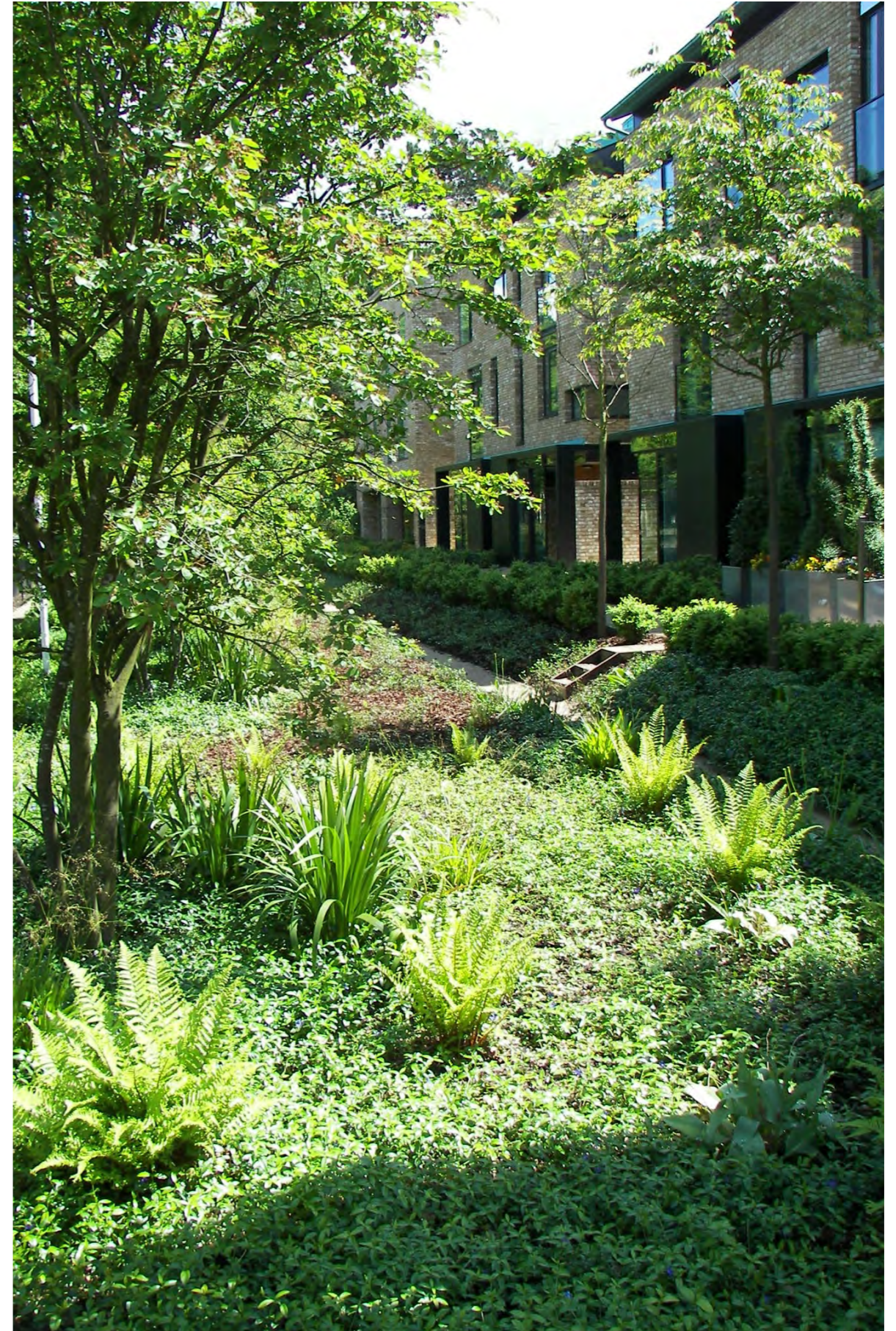
Meadow

WOODLAND Light woodland understorey beneath London Planes, with clearings for play
Multistem shrub layer & ground cover planting matrix, retaining lines of sight



WOODLAND EDGE

Forest garden layers, with edibles & permanent ground cover
Multiple small paths with views through



MEADOW

Low maintenance, low growing flowering meadow mix
Play features built into turfed earth mounds



ORCHARD & MEADOW

Flowering meadow with fruiting trees - standards & bushes

Biodiverse lawn turf - short around square, long at edges



CULTIVATED GARDEN

Clearly defined areas for low maintenance community gardening*
Shrubs, climbers and perennials with edible fruits close to picnic area



* Supported by engagement work during design stages

CREEK

Dry swale collects storm water run-off from square, with naturalistic planting
Ditch & stepping stone provide playable feature, natural buffer & barrier

