

Landscape

TREE STRATEGY



- KEY POINTS**
- Existing trees retained where possible & protected during construction works
 - Setting of existing trees enhanced
 - New trees to define & enhance proposed public open space
 - New tree species selected for seasonal interest, attractive form & ecological biodiversity
 - New hedge/shrub planting to create defensible space & screen residential ground floor windows
 - Sitewide tree trail to provide educational opportunity

KEY	
	Public Open Space
	Residential Street / Block Environs
	Car Park
	Play Area
	Specimen Tree
	Existing Tree - Retained
	Proposed Tree

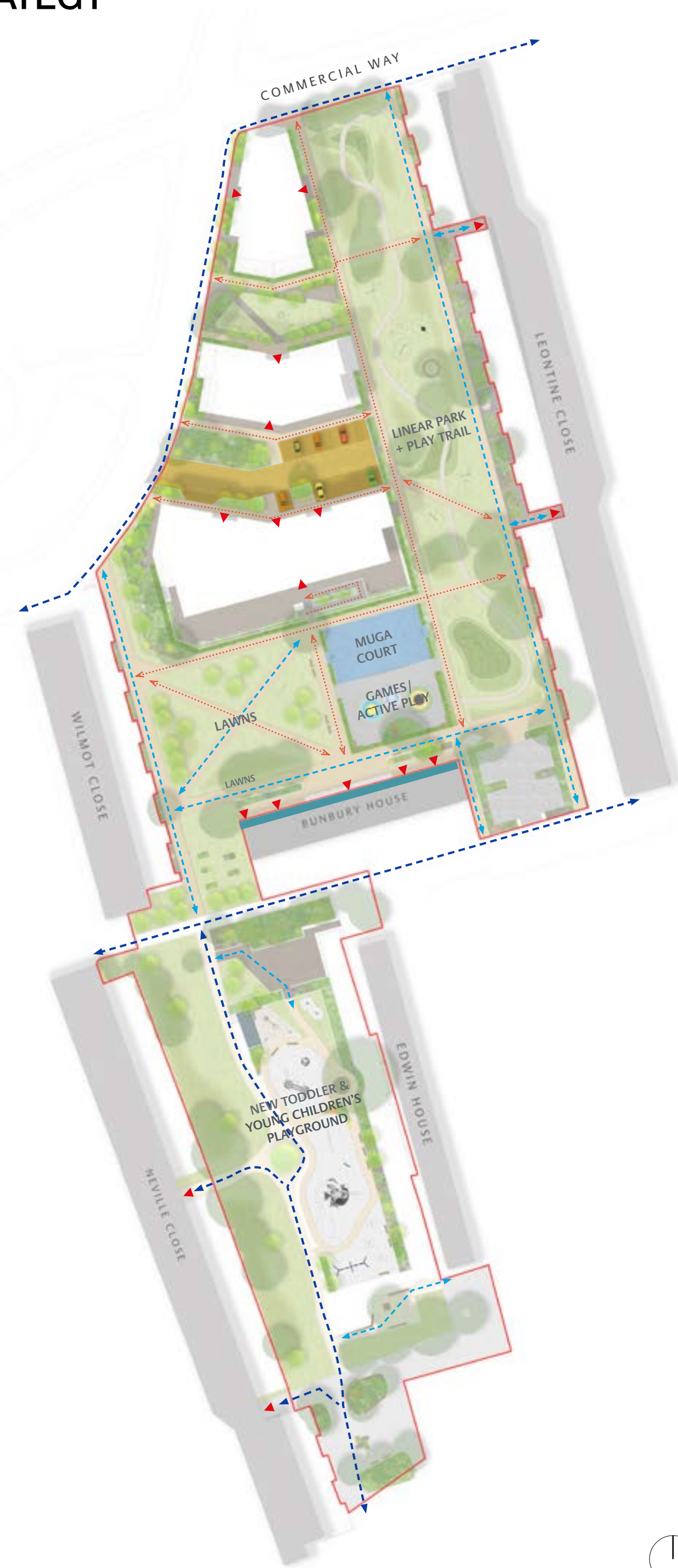
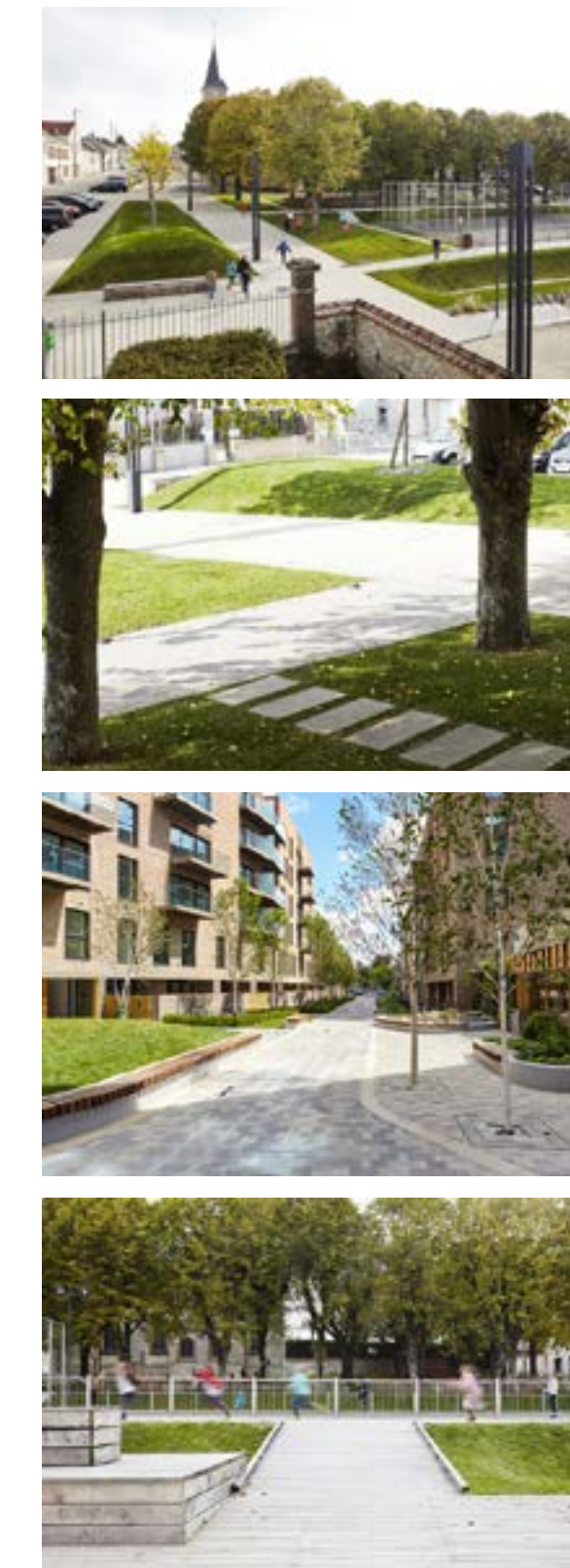
PLANTING STRATEGY



- KEY POINTS**
- Hedge/shrub planting to screen ground floor windows
 - New ornamental & sensory planting providing seasonal interest, colour, scent, texture & movement
 - Plant species selected to attract pollinator & avian species
 - Wildflower meadow planting woven through gardens & integrated with play features
 - Low maintenance & sustainable

KEY	
	Existing tree retained
	New tree - proposed location
	Wildflower meadow planting - indicative location

CIRCULATION STRATEGY



- KEY POINTS**
- Accessible & clear pedestrian routes & sightlines throughout
 - Respect desire lines & create maximum permeability
 - Remove barriers to walking

KEY	
	Existing pedestrian route retained
	Existing connection
	New pedestrian route
	Building entrances
	Vehicle access and parking area -8 standard spaces + 4 wheelchair spaces
	Sensitive boundary -ground floor windows and front doors

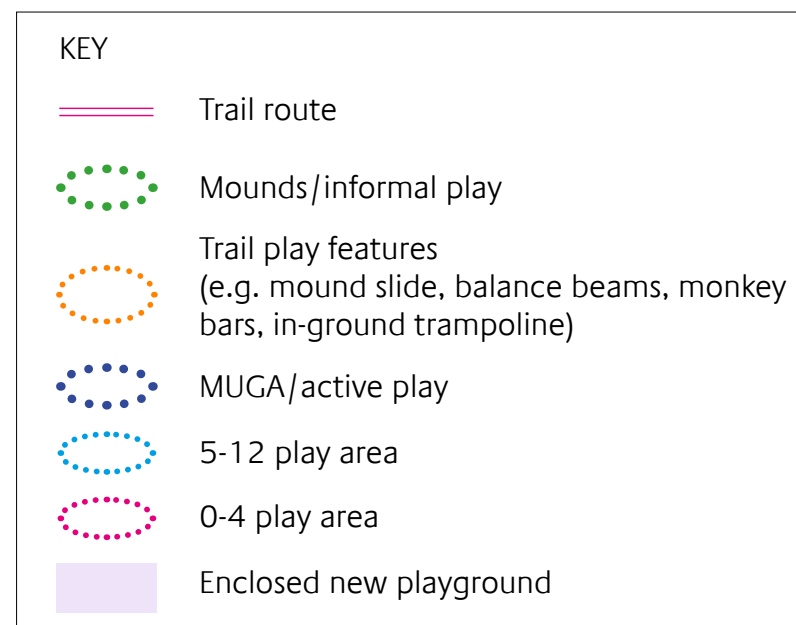
Landscape

PLAY STRATEGY

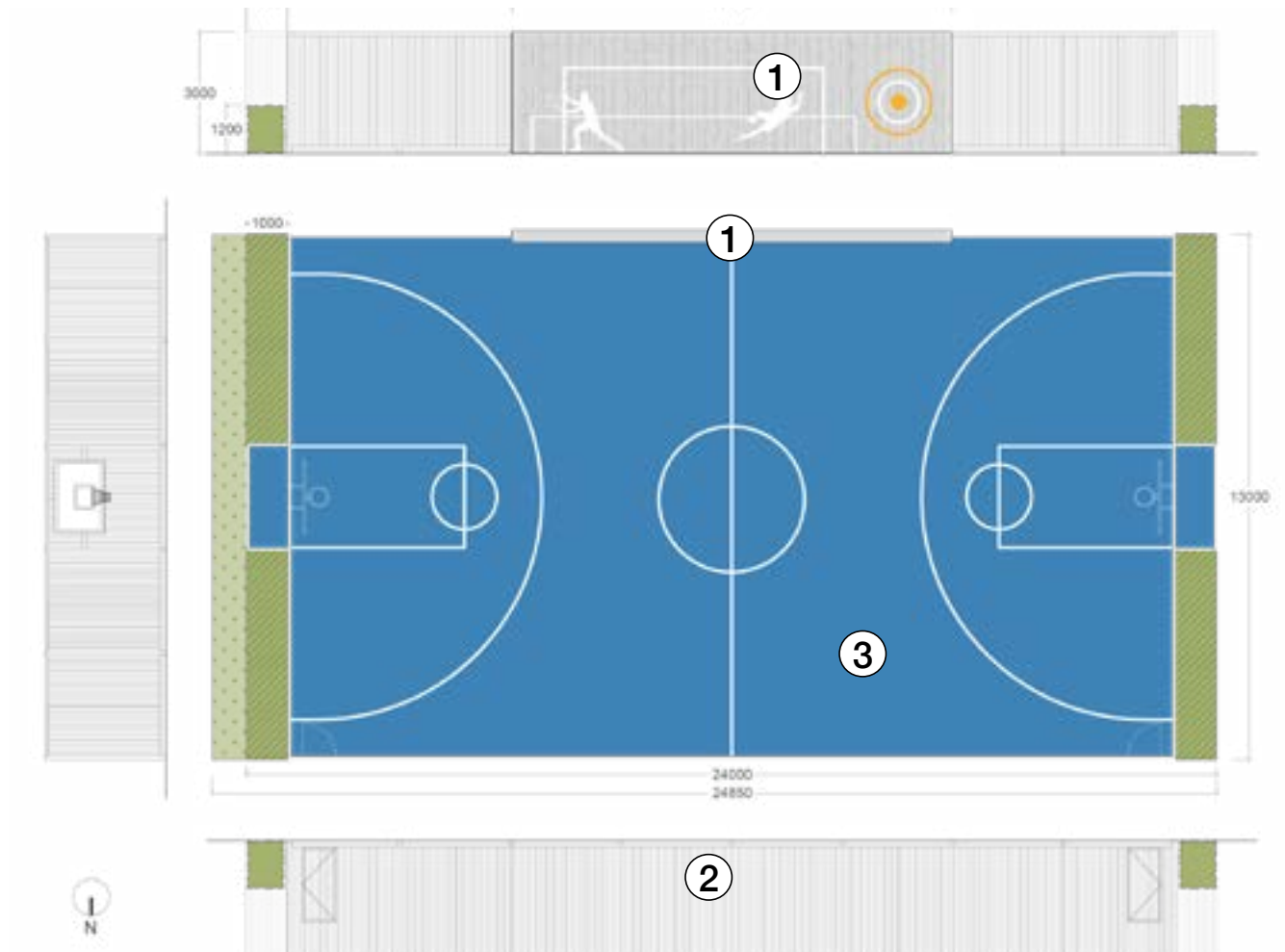
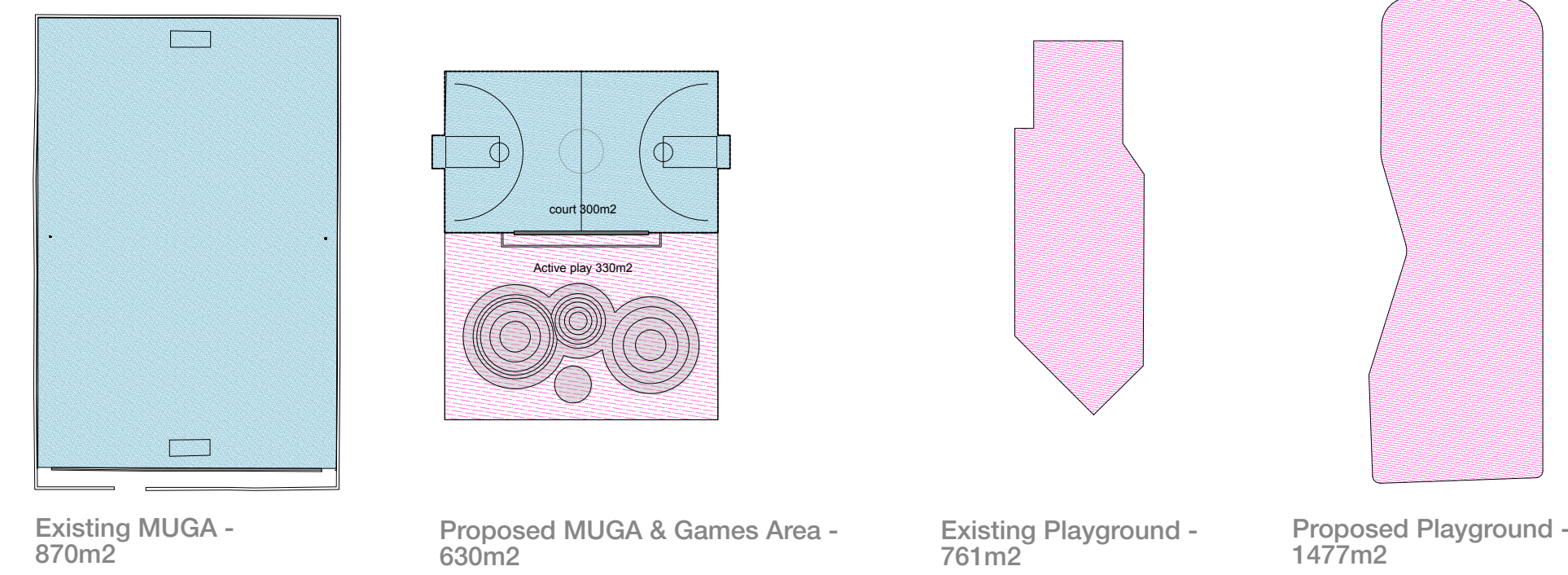


KEY POINTS

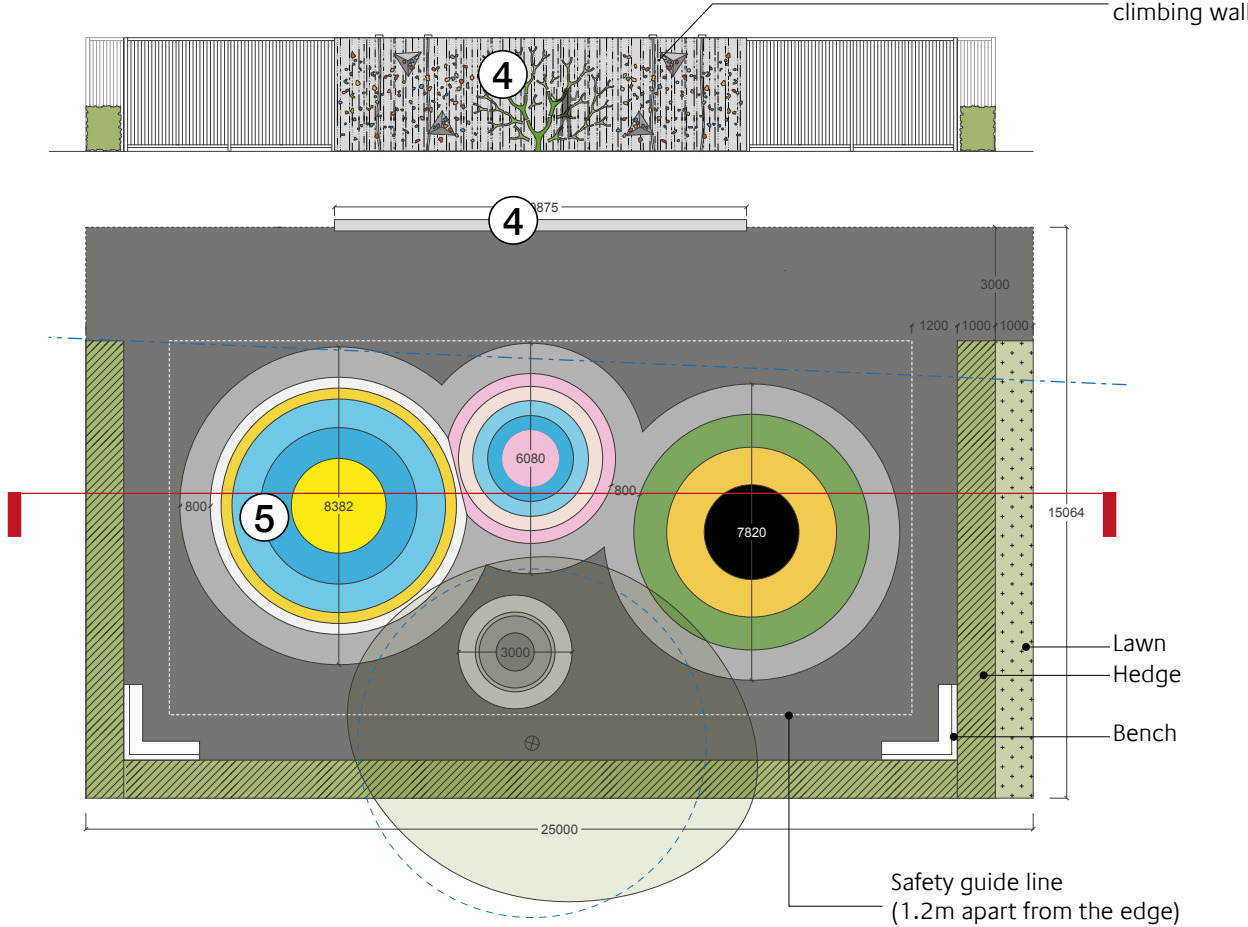
- Simple attractive natural play elements & planting woven through the improved existing green space
- For all ages, but primarily younger children
- Proposed planting is tactile, scented, textured & selected to support pollinator & avian species & enhance the linear park
- An open & playable landscape
- Interconnected & multi-functional spaces
- Accessible for all ages & abilities
- Includes enclosed playground area for younger children



MUGA / GAMES AREA



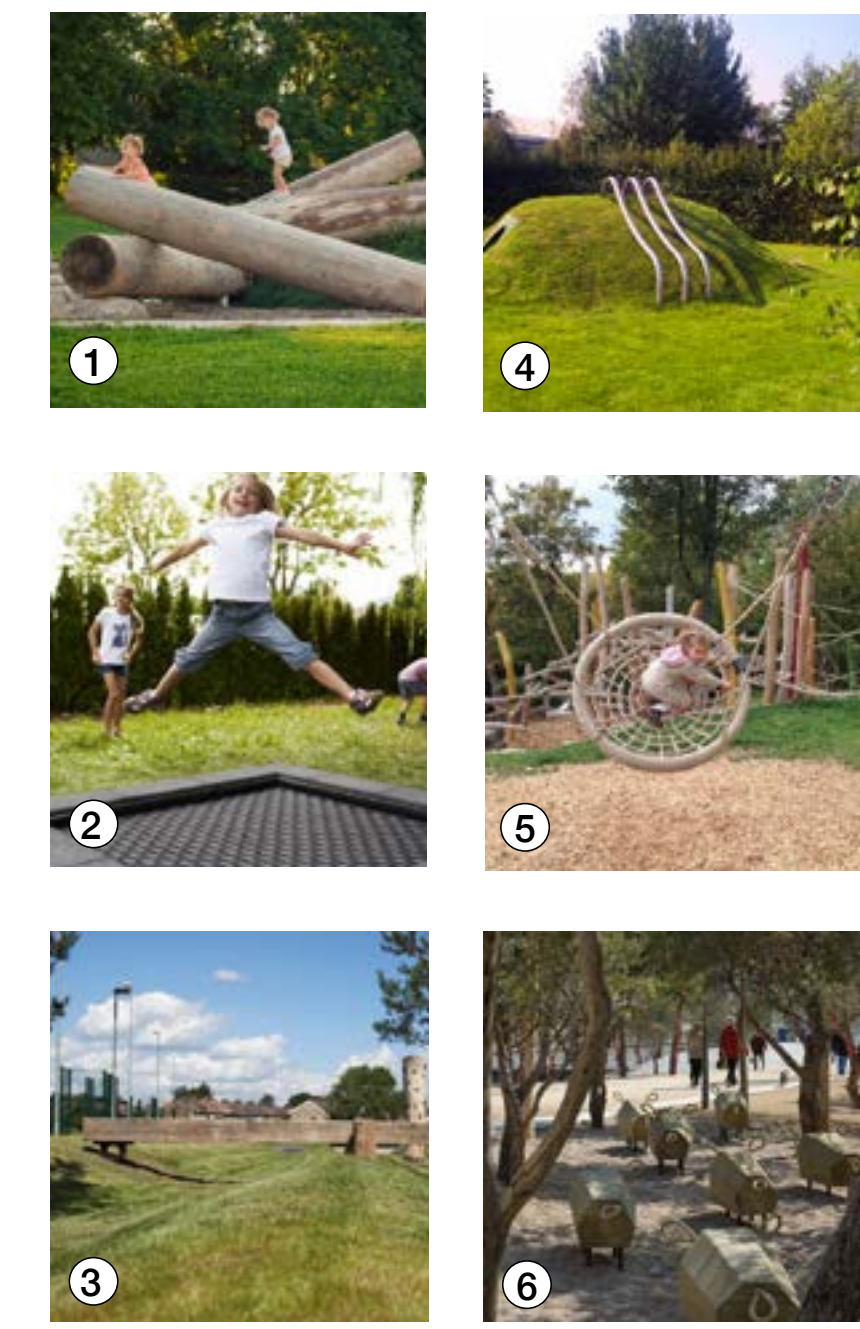
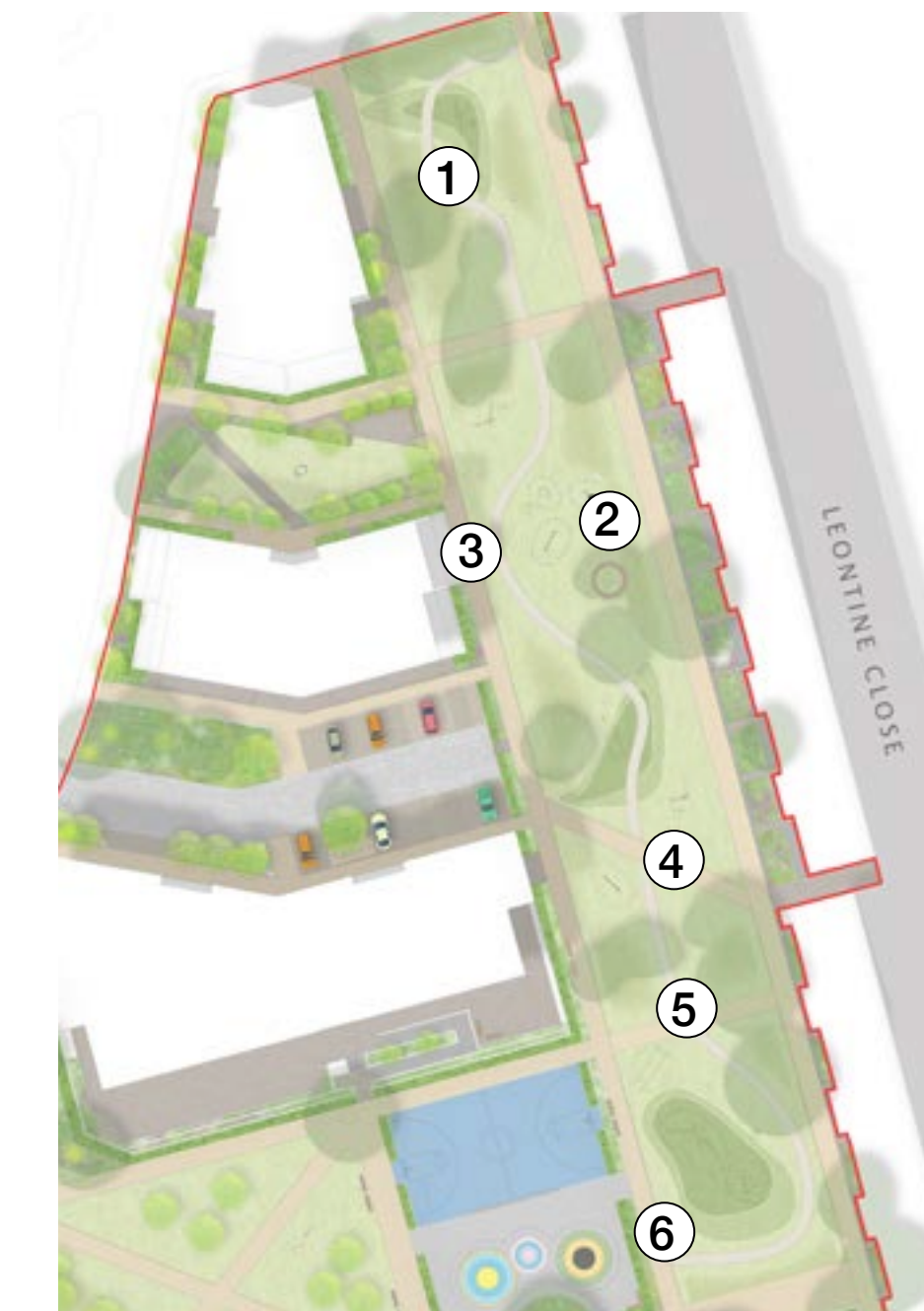
Proposed: Plan & Sections



Games Area: Plan & Sections



LINEAR PARK - INFORMAL PLAY



BELLS GARDENS PLAYGROUND

